



*Live > Enjoy > Grow*

# GILGANDRA REGION GREEN SPACE STRATEGY



# ACKNOWLEDGMENT OF COUNTRY.

Gilgandra is known as a “meeting place” between three Aboriginal nations - Wiradjuri, Kamilaroi and Wailwan - and we proudly continue to be a meeting place for family, friends, locals and visitors alike.

Gilgandra Shire Council acknowledges the traditional custodians of the land on which we live, work and play. We pay our respects to our Elders past, present and emerging, and thank them for the contribution they have made, and continue to make, in the cultural identity of our nation.



Job Name: Gilgandra Green Space Strategy

Client Contact: Kathryn Larkin, Project Manager Strategy & Economic Development

Project Manager: Dan Barr (danbarr@bettercitiesgroup.com)

Version	Date	Reviewed	Approved
V1	20/12/2024	BH	DB
V2	19/02/2025	BH	DB
V3	29/03/2025	BH	DB
V4	03/04/2025	BH	DB

## Disclaimer

Whilst all care and diligence have been exercised in the preparation of this document, the Better Cities Group does not warrant the accuracy of the information contained within and accepts no liability for any loss or damage that may be suffered as a result of reliance on this information, whether or not there has been any error, omission or negligence on the part of the Better Cities Group or their employees.

Any forecasts or projections used in the analysis can be affected by a number of unforeseen variables, and as such no warranty is given that a particular set of results will in fact be achieved.

# CONTENTS

EXECUTIVE SUMMARY	01
Gilgandra Green Space Strategy .....	02
Executive Summary .....	02
CURRENT STATE	03
1 Gilgandra Green Space Strategy .....	04
1.1 Introduction .....	04
1.2 The Strategy .....	04
1.3 The Region .....	05
2 Policy & Planning Framework .....	06
2.1 Overview .....	06
3 Engagement .....	07
3.1 Engagement Methodology .....	07
3.2 Engagement Outcomes .....	07
4 Vision & Themes .....	09
4.1 Vision .....	09
4.2 Themes .....	09
5 Gilgandra's Green Spaces .....	11
5.1 Gilgandra .....	11
5.2 Armatree .....	13
5.3 Tooraweenah .....	14
5.4 Flora Reserve .....	15
FUTURE STATE	17
6 Moving Forward .....	18
6.1 Hierarchy .....	18
6.2 Gilgandra .....	19
6.3 Armatree .....	23
6.4 Tooraweenah .....	24
6.5 Flora Reserve .....	25
7 Action Plan - Delivering the Gilgandra Green Spaces Strategy .....	26
7.1 Implementation Plan .....	26
7.2 Maintenance Service Levels .....	29
APPENDICES	32
Appendix A - Species Selection & Maintenance .....	33
Appendix B - Green Space Schedule .....	34
Appendix C - Action Plan .....	35



## EXECUTIVE SUMMARY



# GILGANDRA GREEN SPACE STRATEGY

## EXECUTIVE SUMMARY

The green spaces of Gilgandra Shire Council are very important to residents, not only for their enjoyment but for how the Shire is presented to visitors. For the purposes of this strategy, green spaces refers to parks, sports fields, key walking connections, cemeteries and civic spaces such as the CBD plazas.

The majority of these green spaces are managed by Council, however it is important to note the significant role played by volunteers in the upkeep of green spaces like the Michael Noonan Memorial Park & War Memorial and the community garden at the Cooe Visitors Rest Area & Memorial Park.

To assist in the development of this strategy, three themes have been adopted for the categorisation of green spaces. These themes are parks and open space, sports fields and green connections. These themes support the vision of:

**Our green spaces include open spaces accessible to the public, parks that are managed areas designed for recreation and leisure, and sports fields designated for both formal and informal sports activities.**

**These green spaces are crucial for providing natural habitats, healthy residents, strong communities and offering places for people to relax, exercise, and enjoy nature.**

The ongoing design, delivery and maintenance of green space needs to occur within the understanding that there are finite resources and climatic conditions that require prioritisation of service levels. For this reason a hierarchy of Gilgandra green spaces has been developed which will guide the maintenance and presentation of the Shire's green spaces during the life of this strategy. These hierarchy levels relate to their use or the distance people travel to use these facilities.

Use of a hierarchy enables a high level of service to be placed on Hunter Park as the principal park within the Shire, McGrane Oval as the main sports fields and Windmill Walk as the key green corridor. This means continuing to offer high service levels and improve these sites. It also puts a premium on regional attractions such as Cooe Visitors Rest Area & Memorial Park and Flora Reserve, whilst acknowledging the importance of green spaces in Armatree and Tooraweenah.

As the Shire grows, with population growth likely to occur in the north-west of Gilgandra it is important to consider the requirement for consolidation of green space and the provision of new green space. For this reason, consideration can be given to reducing the role of Bencubbin Street Park and the Jack McGirr Arboretum site on the periphery of town and investing in a new park at Aeropark Park. This includes extending Windmill Walk to connect key sites on either side of town and also provide a loop on the other side of Castlereagh River.

Finally, the engagement process confirmed the important role of green spaces in the Shire for people to meet, stay healthy, compete in sport and welcome visitors. This strategy has been developed to enable our green spaces to flourish and our community to do the same.





01

CURRENT STATE





# 1 GILGANDRA GREEN SPACE STRATEGY

## 1.1 INTRODUCTION

Gilgandra Shire Council ('GSC'/'Council') is committed to delivering and maintaining high quality public green spaces. Planning, designing, managing, and maintaining public green space is an essential responsibility of Council. In order to direct this, Council has developed this Gilgandra Green Space Strategy (the strategy) which is aligned to the broader Gilgandra Region Community Strategic Plan.

A key challenge facing Council is ensuring our green spaces are meeting the needs and expectations of our community, allowing them to Live>Enjoy>Grow>, while catering to an increasing number of visitors to the region. Council is committed to providing high-quality, accessible and sustainable public green spaces, working with our community to protect and enhance these spaces for current and future generations.

The strategy is a strategic assessment and opportunity analysis of the Gilgandra Region. The strategy has been developed following engagement with key stakeholders within the region. It includes strategic context, analysis of the current and future environments, key infrastructure and opportunities, actions and success measures. It provides strategic direction for the planning, design, management and delivery of public green space in the region.

The strategy maps out the green spaces within Gilgandra Region including the management of green space, future projects and ongoing maintenance. This provides a quantitative and qualitative assessment of Council's green space assets and uses forecast population growth data to determine where the size, quality and distribution of green spaces is adequate for the existing community and future growth. The project has been undertaken in consultation with key stakeholders and the broader community, and been informed by community directions and aspirations.

## 1.2 THE STRATEGY

The Gilgandra Green Space Strategy has the following objectives:

- Provide clear direction to Council on current and future public green space requirements to service our community and visitors to our region
- Provide green spaces that are activated, sustainable, engaging and accessible for a broad range of users
- Provide a framework for the management and delivery of green space, including priorities for investment and direction on the use of Council's resources
- Increasing the liveability of our Region
- Identifying gaps and opportunities
- Aligning strategically and assist in Towards 5000 population vision
- Attracting funding and opportunity

### 1.3 THE REGION

The Gilgandra region, located in New South Wales, Australia, boasts a warm and temperate climate with significant rainfall throughout the year. Summers are hot, with temperatures reaching up to 35°C in January, while winters are mild, averaging around 17°C in July.

The region is known for its friendly locals and rich history, with key destinations including the Cooeee Heritage and Visitor Information Centre, the Gilgandra Rural Museum, and the scenic Warrumbungle National Park.

The economy is primarily driven by agriculture, with a focus

on wheat and sheep farming, as well as emerging industries such as tourism and renewable energy. The population is a mix of long-term residents and newcomers, with a strong sense of community and a commitment to preserving the region's heritage and natural beauty. Looking to the future, Gilgandra aims to grow its economy sustainably, attract more visitors, and provide a high quality of life for its residents.

The Shire has three main towns with green spaces, Gilgandra, Armatree and Tooraweenah which is the focus of this strategy.



FIGURE 1. GILGANDRA LOCAL GOVERNMENT AREA



## 2 POLICY & PLANNING FRAMEWORK

### 2.1 OVERVIEW

The Community Strategic Plan is the highest level plan that Council prepares. Its purpose is to identify the community's main priorities and aspirations for the future and to plan strategies for achieving these goals. In doing this, the planning process considers the issues and pressures that may affect the community and the level of resources that will realistically be available to achieve its aspirations.

This strategy is one of a number of strategies developed to assist Council and the community plan for future population growth towards 5000 people.

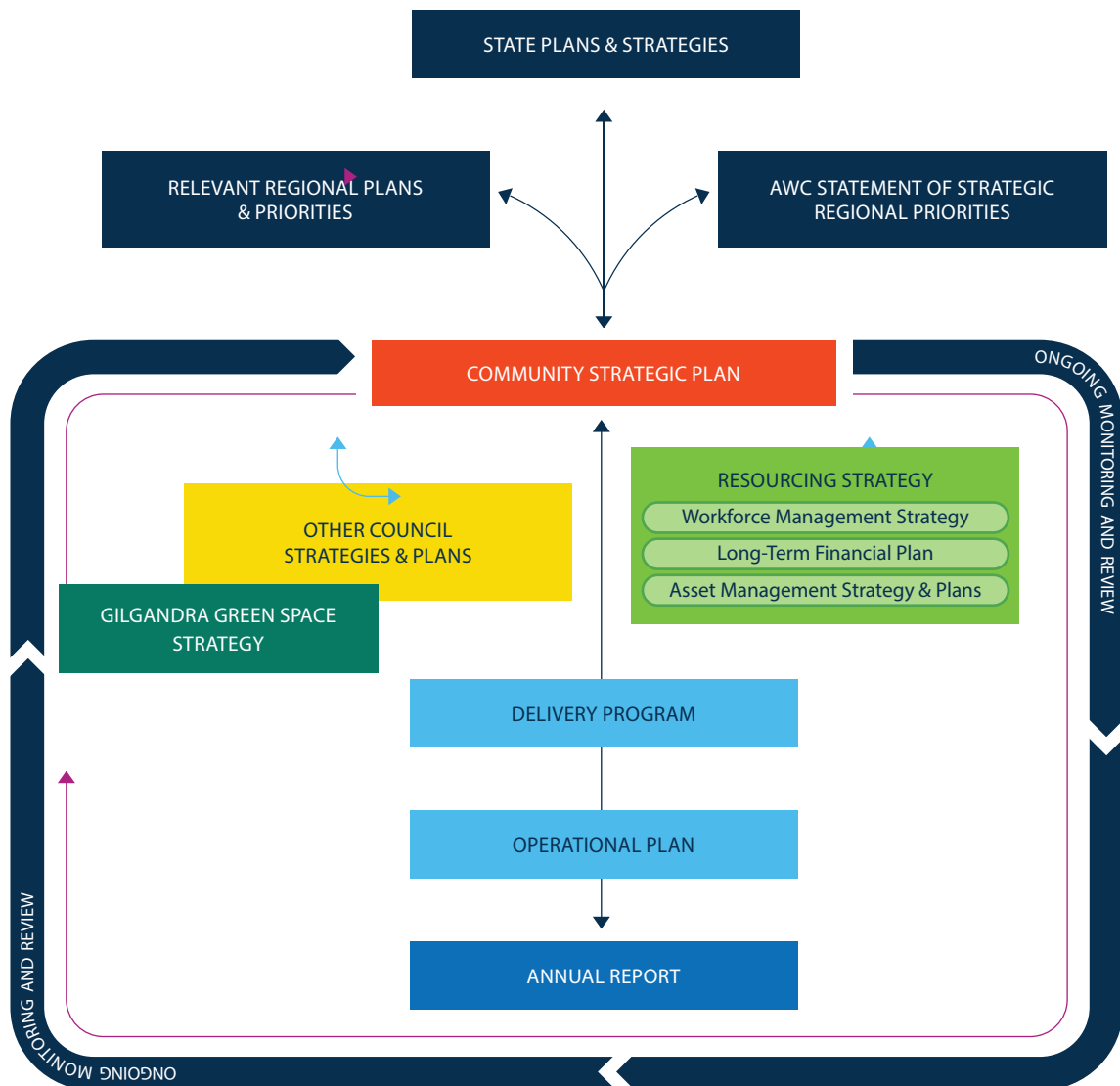


FIGURE 2. POLICY CONTEXT

# 3 ENGAGEMENT

## 3.1 ENGAGEMENT METHODOLOGY

A stakeholder engagement plan was developed which detailed key stakeholders and modes of engagement against IAP2 guidelines. Council is currently in a strategic planning phase with a number of large projects underway. The engagement process was crafted to integrate where possible into existing processes to balance the need for input and optimise participation.

The following engagement activities took place:

- Internal Council workshop (x2)
- Gilgandra Green Spaces Summit (night session with representatives from community, business, government, sports and elected representatives) (28 attendees)
- Online portal for community and clubs (26 responses)
- Structured interviews with key stakeholders (x4)
- On-site discussions with park users

## 3.2 ENGAGEMENT OUTCOMES

The following high level themes emerged from the engagement process:

- McGrane Oval should continue to be the principal sports fields with efforts made to increase their size and capacity
- It is important to present our green spaces to a high standard especially those on the entrances to town
- The town's green spaces are very important for individual health and community interaction
- A walking track around the entire town that connected the Windmill Walk to AeroPark should be prioritised as part of a future Active Transport Strategy
- The extension of the Windmill Walk across the river to create a loop should be delivered
- Tree planting along the main street should occur to reduce heat and improve amenity
- Develop Aeropark Park to support new residential development and the Jack Towney Hostel
- Consider decommissioning the park status of Bencubbin Street Park (replaced by Aeropark Park) and the Jack McGirr Arboretum



FIGURE 3. ENGAGEMENT SESSION COLLATERAL



FIGURE 4. ONLINE PORTAL HOMEPAGE





FIGURE 5. GILGANDRA GREEN SPACE SUMMIT

## 4 VISION & THEMES

### 4.1 VISION

Our green spaces include open spaces accessible to the public, parks that are managed areas designed for recreation and leisure, and sports fields designated for both formal and informal sports activities.

These green spaces are crucial for providing natural habitats, healthy residents, strong communities and offering places for people to relax, exercise, and enjoy nature.



FIGURE 6. ERNIE KNIGHT OVAL



## 4.2 THEMES



### 1. PARKS AND OPEN SPACE (PASSIVE)

The theme of parks and open space focuses on creating accessible, well-managed green spaces that cater to both recreational and leisure activities. This includes

- ensuring that open spaces are accessible to everyone in the community.
- designing parks specifically for recreation, leisure, relaxation and enjoyment.

These green spaces are essential for providing natural habitats, supporting healthy residents, fostering strong communities, and offering places for people to relax, exercise, and connect with nature.



### 2. SPORTS FIELDS (ACTIVE)

The theme of sports fields emphasises the importance of designated areas for both formal and informal sports activities. This includes:

- well-maintained fields designed for organised sports events and team practices, promoting physical health and community engagement.
- spaces where residents can spontaneously participate in sports and recreational activities, fostering a sense of community and encouraging an active lifestyle.

By providing and maintaining sports fields, the strategy aims to support healthy residents, strengthen communities, and offer spaces for people to exercise, enjoy nature, and connect with others.



### 3. GREEN CONNECTIONS (LINKAGES)

The theme of green connections focuses on creating and enhancing links between different green spaces, ensuring that they are interconnected and accessible. This includes:

- developing a network of pathways and trails that connect parks, open spaces, and sports fields, encouraging walking, cycling, and other forms of active transportation.
- establishing corridors that connect natural habitats, supporting biodiversity and allowing wildlife to move safely between green spaces.
- creating connections between green spaces and residential, commercial, and educational areas to integrate green spaces into daily life, making them more accessible and inviting for community use.

These green connections are crucial for providing natural habitats, supporting healthy residents, and building strong communities by offering accessible and inviting places for people to relax, exercise, and enjoy nature.

# 5 GILGANDRA'S GREEN SPACES

## 5.1 GILGANDRA

The Gilgandra township enjoys access to a range of high quality green spaces, sports fields and walking tracks. The principal walking trail is Windmill Walk which is a delightful two-kilometre one-way stroll along the banks of the Castlereagh River, starting from the Gilgandra CBD (Miller Street) and leading to the Gilgandra Cultural Precinct.

This scenic walk showcases a variety of native fauna and flora, and features several beautifully refurbished windmills that once operated in the area. These windmills are adorned with vibrant artworks. The walk is not only a celebration of the natural beauty of the Castlereagh River but also a tribute to the cultural history of Gilgandra.

The primary park location is Hunter Park, located just 200 metres from the Gilgandra CBD at 5 Warren Road and is a well-maintained park that offers a variety of amenities. The park is known for its palm trees, which provide ample shade for picnics and leisurely strolls.

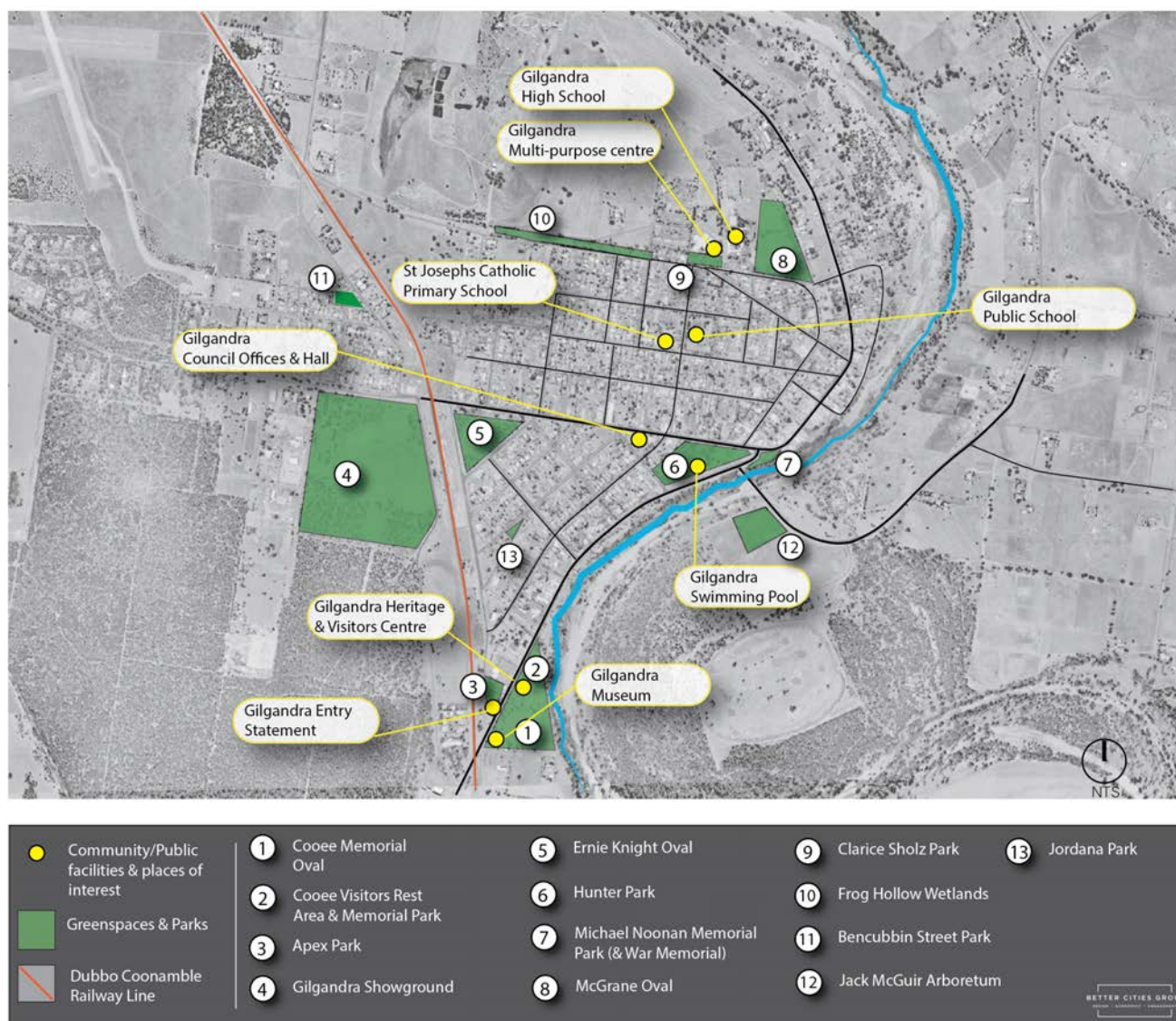


FIGURE 7. GILGANDRA - CURRENT GREEN SPACES



Families can enjoy the modern kids' play equipment and the skate park, while the public barbecue facilities make it an ideal spot for gatherings. Additionally, the nearby Gilgandra Swimming Pool offers a refreshing way to cool down.

McGrane Oval, located at Byrne Avenue in Gilgandra, is the principal sporting precinct of the area. The oval has undergone significant upgrades, including improved lighting, upgraded change rooms, new netball courts, and enhanced spectator seating. It serves as a hub for various sporting activities, from grassroots sports to senior competitions, and hosts regional events.



FIGURE 8. GILGANDRA - KEY GREEN CORRIDORS

## 5.2 ARMATREE

Armatree, a small locality near Gilgandra, has a population of around 164 people as of the 2021 Census. The village is known for its charming parks and open spaces, including the Armatree Memorial Park, which features the “Big ArmaTree,” a notable landmark and piece of public art.

The park also includes history boards that reflect the village’s involvement in military service. Additionally, the area boasts well-maintained pathways, landscaping, and lighting, creating a pleasant environment for both residents and visitors. The village’s open spaces are designed to encourage outdoor activities and community gatherings, making it a welcoming place to explore and enjoy nature



FIGURE 9. ARMATREE - CURRENT GREEN SPACES



### 5.3 TOORAWEEAH

Tooraweenah, located near Gilgandra, has a population of approximately 253 people as of the 2021 Census. The village is known for its picturesque parks and open spaces, including Tooraweenah Park, situated in the heart of the village.

This park features modern play equipment, public toilets, barbecue facilities, and shaded eating areas, making it an ideal spot for family gatherings. Additionally, the park includes cricket nets, tennis courts, a basketball ring, and a sporting field. Visitors can also enjoy the historic trail through town and the stunning views of the Warrumbungles from the GK Rohr Warrumbungle Viewing Platform



FIGURE 10. TOORAWEEAH - CURRENT GREEN SPACES

## 5.4 FLORA RESERVE

Gilgandra Flora Reserve is a beautiful natural area spanning over 8 hectares of native bushland, showcasing a variety of rare and endangered plants. The reserve is home to a diverse range of flora, with flowers typically blooming from August to November.

Visitors can enjoy a variety of walking tracks that cater to different fitness levels, offering scenic views and a chance to immerse themselves in nature. The reserve is equipped with amenities such as BBQ facilities, picnic tables, shelters, toilets, and water, making it an ideal spot for a day out. Access to the reserve is easy, located on Flora Reserve Road, just off the Newell Highway, and it is open to the public seven days a week.

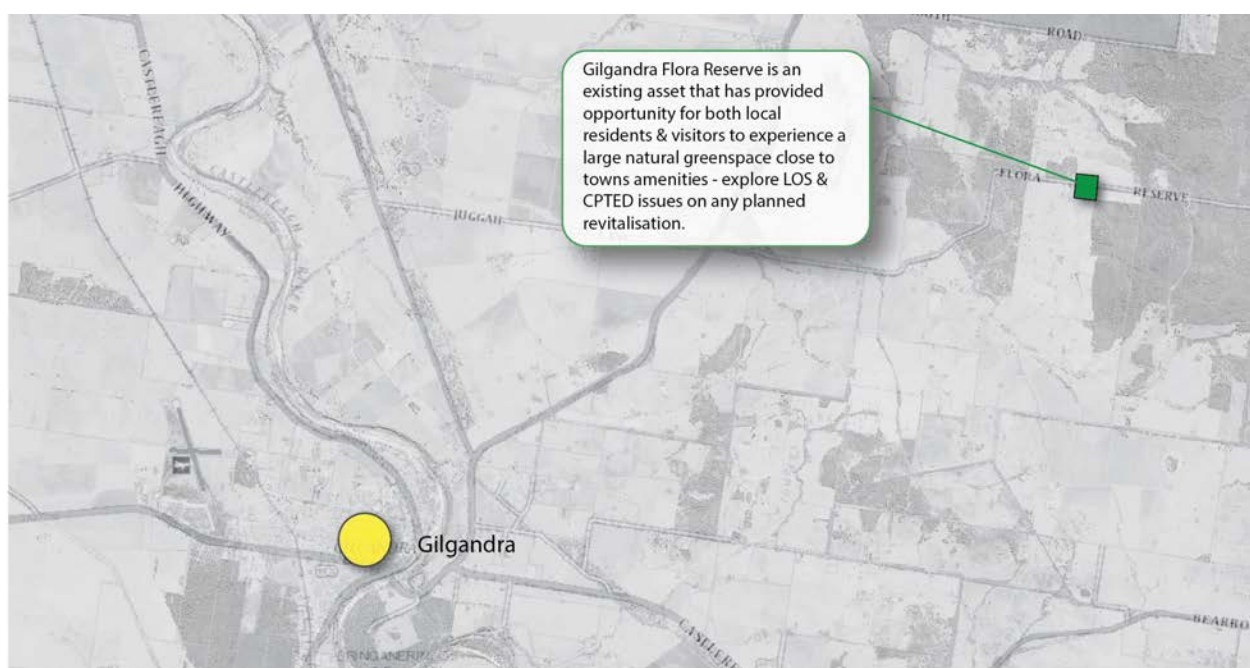


FIGURE 11. FLORA RESERVE





FIGURE 12. KOOKABURRA MEMORIAL PARK & OVAL





02

FUTURE STATE





## 6 MOVING FORWARD

### 6.1 HIERARCHY

A hierarchy of green spaces is described below and is used to define level of embellishment, level of maintenance, gaps in provision and to categorise the types of facilities.

HIERARCHY	DESCRIPTION
NSW Regional	NSW Regional profile People travel to see/enjoy Drives tourism and supports reputation Heightened embellishment and maintenance
Regional	Visited by people across the Shire High level embellishment and maintenance
Local	Visited by the local catchment only
Town Signage	Entrances to towns and villages
Public realm	Civic Space eg. town hall Plazas
Cemeteries	Town cemeteries

TABLE 1. HIERARCHY

## 6.2 GILGANDRA

Gilgandra is the major centre, most likely to experience population growth and the principal location for visitors to the region. It is appropriate to continue to invest in the town's green spaces principally:

- ongoing upgrades to Windmill Walk to create a loop on the other side of Castlereagh River, consolidation of park furniture such as shelters and picnic benches and an integrated wayfinding signage package
- expansion of McGrane Oval
- increased use of Ernie Knight oval for overflow training and event delivery
- design and delivery of Aeropark Park with consideration of the removal of Bencubbin Park to support delivery and consolidate maintenance requirements
- delivery of a continuous walking loop around

the periphery of town

- upgrade of the Cooee Lodge Parklands to include more shade, shelter and improved accessibility
- main street upgrade to include avenue of shade trees
- continued support for volunteer groups who provide valuable maintenance and care for parks like Michael Noonan Memorial Park and War Memorial Precinct Hunter Park and the Gilgandra Showgrounds

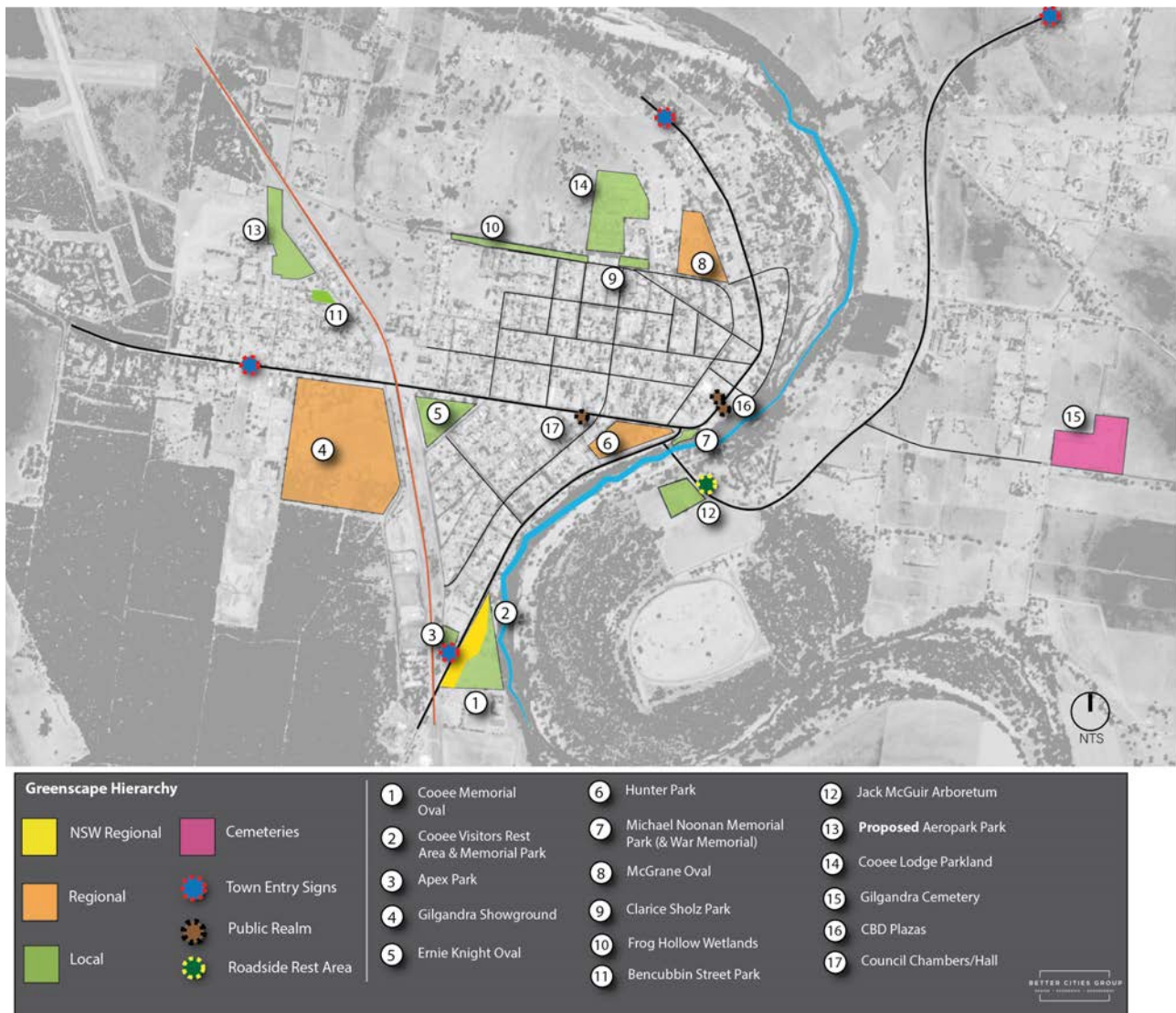


FIGURE 12. GILGANDRA - PROPOSED GREEN SPACES





FIGURE 14. MCGRANE OVAL

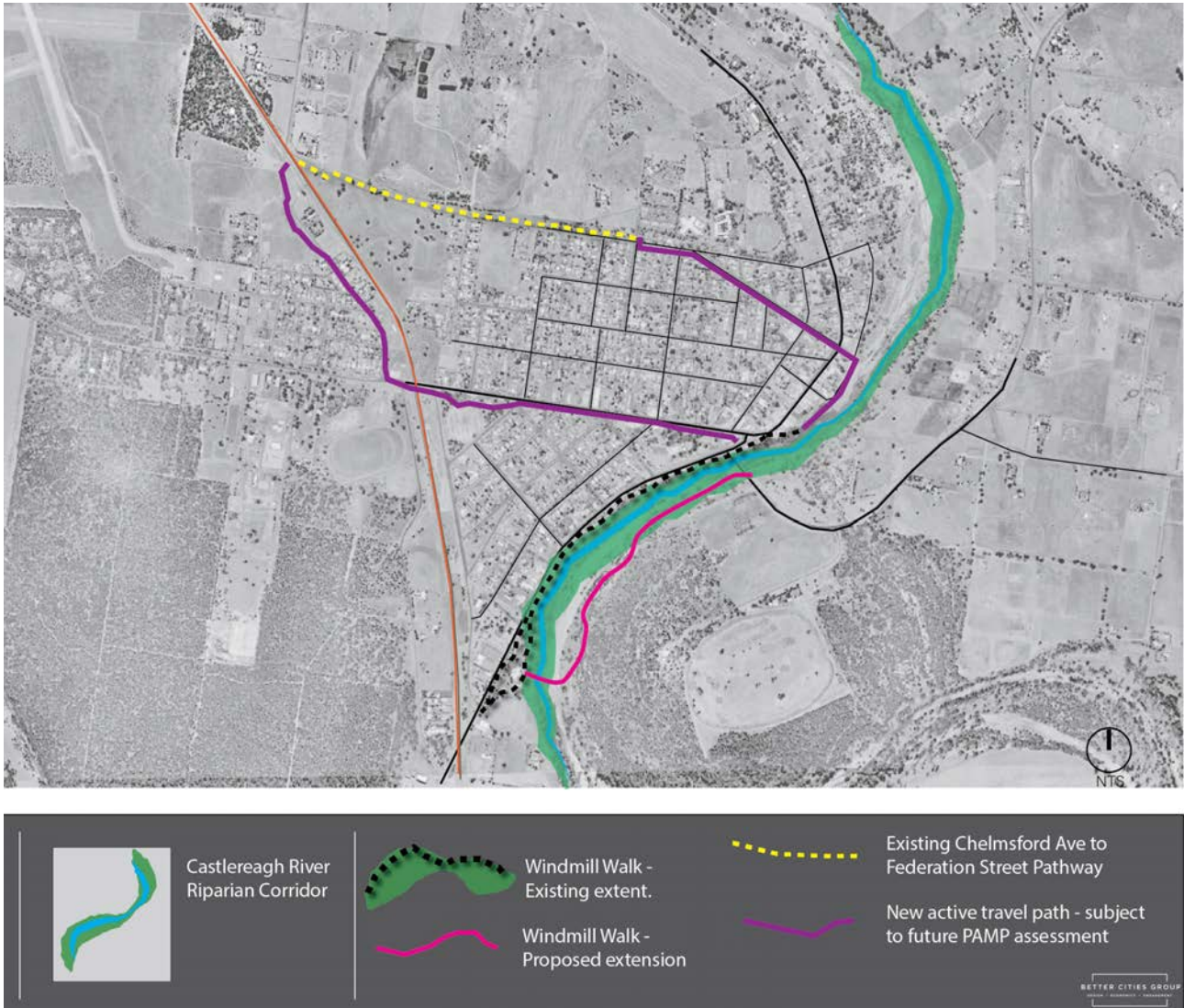


FIGURE 13. GILGANDRA - PROPOSED GREEN CORRIDORS





FIGURE 14. MCGRANE OVAL

## 6.3 ARMATREE

As detailed in the Armatree Village Management Plan, key improvements include:

- Increased maintenance at Armatree Anzac Memorial Park
- Lemon-scented gums as avenue of trees down western side of railway line, between railway and Armatree Street
- Maintenance prior to events eg ANZAC day
- Enhance and invest in the War Memorial Precinct (culverts, pathway completion, reflective seats on the grass facing
- the war memorial, aluminum benches and history board upgrades with QR code
- Investigate lighting of the ArmaTree

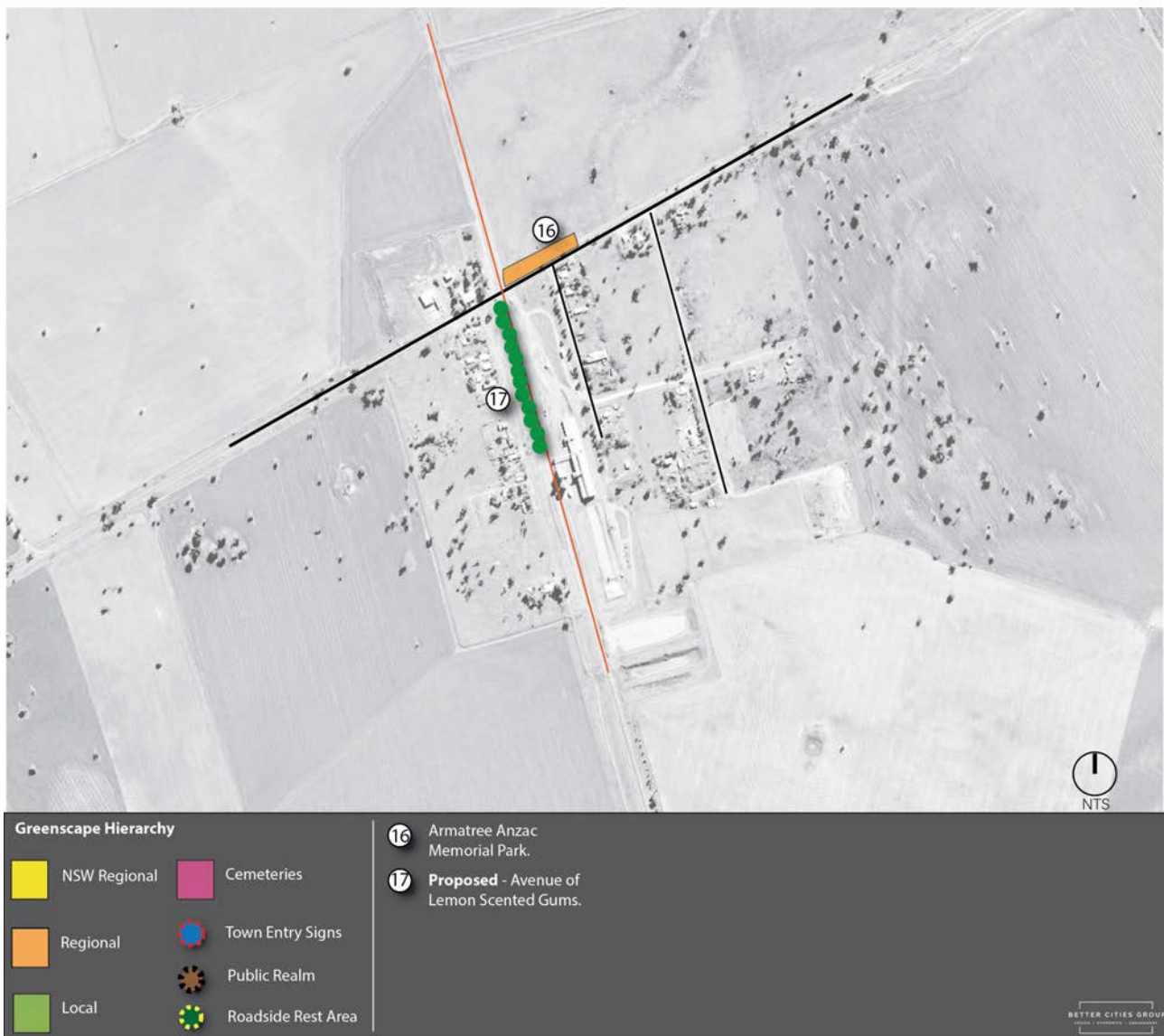


FIGURE 15. ARMATREE - PROPOSED GREEN SPACES



## 6.4 TOORAWEEAH

As detailed in the Tooraweenah Village Management Plan, key improvements include:

- Unisex and Accessible public toilets located on the North/Western side of the Tooraweenah Tennis Courts on the frontage of Murray Street
- Footy posts at Kookaburra Memorial Park



FIGURE 16. TOORAWEEAH - PROPOSED GREEN SPACES



## 6.5 FLORA RESERVE

Council has recently assumed responsibility for this site and to continue to present it as a tourism destination of regional significance a suite of embellishments will be required in addition to regular maintenance. It is appropriate to develop a plan of management which will guide future investment, maintenance and required budget allocation.

Embellishments to include:

- gateway and welcome signage'
- wayfinding and information signage suite
- entrance structures refurbishment (shelters, bins, seating etc)



FIGURE 17. FLORA RESERVE



# 7 ACTION PLAN - DELIVERING THE GILGANDRA GREEN SPACES STRATEGY

## 7.1 IMPLEMENTATION PLAN

### VISION

Our green spaces include open spaces accessible to the public, parks that are managed areas designed for recreation and leisure, and sports fields designated for both formal and informal sports activities.

These green spaces are crucial for providing natural habitats, healthy residents, strong communities and offering places for people to relax, exercise, and enjoy nature.

### THEMES



#### PARKS AND OPEN SPACE

The pillar of parks and open space focuses on creating accessible, well-managed green spaces that cater to both recreational and leisure activities.



#### SPORTS FIELDS

The pillar of sports fields emphasises the importance of designated areas for both formal and informal sports activities.



#### GREEN CONNECTIONS

The theme of green connections focuses on creating and enhancing links between different green spaces, ensuring that they are interconnected and accessible.



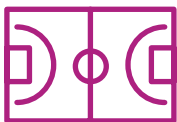
## PARKS AND OPEN SPACE

The pillar of parks and open space focuses on creating accessible, well-managed green spaces that cater to both recreational and leisure activities.

ACTION	DESCRIPTION
1.1	<p>Delivery of the Council endorsed Hunter Park Sporting Precinct which includes:</p> <ul style="list-style-type: none"> <li>• 50m swimming pool, all abilities access, separate learn to swim and water splash pool</li> <li>• Shaded viewing areas, generous grassed seating areas</li> <li>• Amenities</li> <li>• Multipurpose Club House</li> <li>• Two full size multipurpose basketball courts and spectator area</li> <li>• A modern indoor gymnasium and fitness spaces</li> <li>• A youth centre including a “chill out” youth space</li> <li>• Office and administration areas</li> <li>• Provide a central access and egress point and shared kiosk and canteen area facilities</li> <li>• Four new tennis courts</li> <li>• Extensive On-site parking</li> <li>• External lighting and CCTV</li> </ul>
1.2	Installation of digital signage in the Community Plaza and Apex Park
1.3	Installation of a GIL sign at the Gilgandra Cultural Precinct
1.4	Design and delivery of Aeropark Park with consideration of the removal of Bencubbin Park to support delivery and consolidate maintenance requirements
1.5	<p>Miller Street CBD Town Centre Precinct</p> <ul style="list-style-type: none"> <li>• Windmill Walk extension memorial precinct to Court Street</li> <li>• Viewing platform behind Gil Library Hub</li> <li>• Boardwalk</li> </ul>
1.6	Upgrade of the Cooee Lodge Parklands to include more shade, shelter and improved accessibility
1.7	Ongoing acknowledgment of the important role played by volunteer groups in the maintenance of key park locations.
1.8	<p>Development of a plan of management for Flora Reserve which would include defining key capital upgrades such as:</p> <ul style="list-style-type: none"> <li>• signage</li> <li>• wayfinding</li> <li>• shelter upgrades</li> </ul>
1.9	Increased maintenance at Armatree Anzac Memorial Park
1.10	Enhance and invest in the Armatree War Memorial Precinct
1.11	Investigate lighting of the ArmaTree
1.12	Conduct a tree audit and maintain a register of Council’s trees
1.13	Require new developments to align species planting with this strategy

TABLE 3. PARKS AND OPEN SPACE ACTIONS





## SPORTS FIELDS

The pillar of sports fields emphasises the importance of designated areas for both formal and informal sports activities.

ACTION	DESCRIPTION
2.1	Consider opportunity for the expansion of the McGrane Oval precinct to build sports field capacity and ensure the precinct remains the primary sports field precinct in the Shire
2.2	Upgrade of the dog off leash area (signage, fencing etc) at Ernie Knight Oval
2.3	Installation of unisex and accessible public toilets located on the North/Western side of the Tooraweenah Tennis Courts on the frontage of Murray Street

TABLE 4. SPORTS FIELDS ACTIONS



## GREEN CONNECTIONS

The theme of green connections focuses on creating and enhancing links between different green spaces, ensuring that they are interconnected and accessible

ACTION	DESCRIPTION
3.1	<p>Continue to work closely with neighbouring Councils in the delivery of the Real Country business case and marketing strategy specifically related to Castlereagh River activation and CBD improvements as detailed below:</p> <ul style="list-style-type: none"><li>• Windmill Walk &amp; Gilgandra Cultural Precinct</li><li>• GCP River Crossing &amp; viewing platform</li><li>• Accessible cycle/walkway and integrated signage package</li><li>• Nature trail connections to Golf Club, Racecourse and Gilgandra Caravan Park (CPTED to be considered)</li><li>• Riverfront activation picnic tables</li><li>• Solar lighting</li><li>• Consolidation of existing park furniture</li></ul>
3.2	Consider irrigation of Windmill Walk from Cooee Heritage & Visitor Information to Castlereagh Highway
3.3	Lemon-scented gums as avenue of trees down Western side of railway line, between railway and Armatree Street

TABLE 5. GREEN CONNECTIONS ACTIONS

## 7.2 MAINTENANCE SERVICE LEVELS

The development of maintenance service levels are the result of a collaborative process that considers community needs, available resources, and environmental sustainability. The baseline review was initiated with an assessment of the current condition of parks and fields, as well as understanding local usage patterns and priorities.

Stakeholder input has also played a key role in shaping service levels and defining clear goals for aesthetics, functionality, and safety, alongside setting measurable performance indicators. Balancing financial constraints and staffing resources ensures that service levels remain practical and achievable.

As this is the first version of the Gilgandra Region Green Space Strategy, it is acknowledged that there may be gaps between the budget, resourcing and these levels of service and some adjustment may be required for these factors to align. The levels of service suggested in this Strategy provide a recommended starting point with a view to implementing, monitoring and fine-tuning over time.

HIERARCHY	SITES	SERVICE LEVEL STANDARD	DESCRIPTION	MAINTENANCE SERVICE LEVELS
NSW Regional	-Cooee Visitors Rest Area and Memorial Park	Very High	High order maintenance program for presentation of highly visible and regionally significant open spaces	<ul style="list-style-type: none"> <li>Mowing and edging: Every week during peak growing seasons; monthly during off-peak.</li> <li>Mulching: Biannually to maintain soil health and moisture.</li> <li>Fertilising: Twice a year, focusing on high-traffic areas.</li> <li>Weeding: Monthly weed management of garden beds &amp; gravel paths.</li> <li>Litter Pickup: Weekly or biweekly, depending on usage and visibility.</li> <li>Tree Pruning: Annually or as needed for safety and aesthetics.</li> <li>Planting: Replacing dead or damaged plants as required.</li> <li>Irrigation: Automated systems monitored regularly; adjusted seasonally.</li> </ul>
Regional	-Cooee Memorial Open Space -Gilgandra Showgrounds -Hunter Park -McGrane Oval -Flora Reserve -Armatree Park -Kookaburra Memorial Park & Oval -Windmill Walk	High	Above average maintenance that presents high quality facilities and services	<ul style="list-style-type: none"> <li>Mowing and edging: Every 3-4 weeks during peak seasons; every 6 weeks during off-peak.</li> <li>Mulching: Annually, focusing on garden beds and tree bases.</li> <li>Fertilising: Once a year, targeting key areas.</li> <li>Weeding: Monthly weed management of garden beds &amp; gravel paths.</li> <li>Litter Pickup: Biweekly or monthly, depending on foot traffic.</li> <li>Tree Pruning: As needed, typically every 2-3 years.</li> <li>Irrigation: Semi-automated or manual checks; adjusted seasonally.</li> <li>Cleaning: BBQ and toilets clean daily</li> <li>Inspection: Inspect for damage and remove debris daily</li> </ul>



HIERARCHY	SITES	SERVICE LEVEL STANDARD	DESCRIPTION	MAINTENANCE SERVICE LEVELS
Local	-Ernie Kinght Oval -Michael Noonan Memorial Park & War Memorial -Clarice Sholz -Frog Hollow Wetlands -Bencubbin St Park -Jordana Park -Jack McGirr Arboretum -Cooee Lodge	Low	Basic Maintenance	<ul style="list-style-type: none"> <li>• Mowing: Monthly during peak seasons; every 6-8 weeks during off-peak.</li> <li>• Mulching: As needed, typically every 1-2 years.</li> <li>• Fertilising: Minimal, focusing on specific problem areas.</li> <li>• Litter Pickup: Monthly or as needed.</li> <li>• Tree Pruning: Reactive, addressing safety concerns only.</li> <li>• Irrigation: Manual watering if required.</li> </ul>
Town Signage	-Apex Reserve -Town and village entrance signs	Medium	Moderate maintenance that presents assets in a good condition	<ul style="list-style-type: none"> <li>• Regular Inspections: Monthly checks to assess the sign's condition, including structural integrity, visibility, and cleanliness.</li> <li>• Cleaning: Periodically clean the sign to remove dirt, grime, and any graffiti.</li> <li>• Repairs: Address any damages promptly, such as fixing cracks, replacing faded or peeling paint, or repairing lighting if the sign is illuminated.</li> <li>• Repainting and Refurbishing: Biannually, signs may require repainting or refurbishing to restore its original look and ensure it remains vibrant and attractive.</li> <li>• Vegetation Management: Trim any overgrown vegetation around the sign on a monthly basis to ensure it remains visible to passersby.</li> </ul>

HIERARCHY	SITES	SERVICE LEVEL STANDARD	DESCRIPTION	MAINTENANCE SERVICE LEVELS
Public Realm	CBD Plazas / Civic Spaces / Rear CBD	High	Above average maintenance that presents high quality facilities and services	<p>Cleaning and Waste Management</p> <ul style="list-style-type: none"> <li>Daily: Toilets inspected for vandalism and cleaned daily.</li> <li>Weekly: Emptying bins and removing litter.</li> <li>Monthly: Street sweeping, Power washing high usage areas and plaza areas to remove stains and debris.</li> <li>Monthly: Deep cleaning of public spaces, including benches, fountains, and other amenities.</li> </ul> <p>Landscaping and Green Spaces</p> <ul style="list-style-type: none"> <li>Weekly: Watering plants and trees during dry seasons.</li> <li>Weekly: Pruning shrubs and trees, mowing lawns, and removing weeds.</li> <li>Mulching: Biannually to maintain soil health and moisture.</li> <li>Seasonal: Planting new flowers and replacing dead plants.</li> </ul> <p>Infrastructure Maintenance</p> <ul style="list-style-type: none"> <li>Weekly: Inspecting roads, footpaths, and public seating for damage.</li> <li>Monthly: Repairing minor cracks, potholes, and uneven surfaces.</li> <li>As Needed: Major repairs or replacements of infrastructure.</li> </ul> <p>Lighting and Safety</p> <ul style="list-style-type: none"> <li>Weekly: Checking and replacing faulty streetlights and plaza lighting.</li> <li>Monthly: Inspecting electrical systems and ensuring safety compliance.</li> </ul> <p>Signage and Accessibility</p> <ul style="list-style-type: none"> <li>Weekly: Cleaning and maintaining street signs and traffic signals.</li> <li>Monthly: Inspecting accessibility features like ramps and tactile paving for wear and tear.</li> </ul>
Cemeteries	-Gilgandra Cemetery	Medium	Moderate maintenance that presents open space in a good condition	<ul style="list-style-type: none"> <li>Grounds Maintenance: Fortnightly mowing, trimming, and landscaping to keep the cemetery neat and accessible. This includes maintaining pathways and removing debris.</li> <li>Accessibility: Maintaining clear and safe access to all areas of the cemetery, including pathways, parking areas, and entry points.</li> <li>Environmental Management: Managing vegetation, controlling pests, and ensuring proper drainage to prevent erosion or waterlogging.</li> <li>Safety Standards: Regular inspections to identify and address hazards, such as unstable structures, dangerous trees or branches or overgrown vegetation.</li> <li>Heritage Preservation: For cemeteries with historical significance, adhering to guidelines for preserving heritage values.</li> <li>Public Amenities: Maintaining facilities like seating, signage, and water points to enhance visitor experience.</li> </ul>

TABLE 6. MAINTENANCE SERVICE LEVELS





# 03

## APPENDICES



# APPENDIX A - SPECIES SELECTION & MAINTENANCE

This strategy prioritises the selection of native plant species that are well-adapted to the local climate and soil conditions. Eucalyptus trees, such as Eucalyptus camaldulensis (River Red Gum) and Eucalyptus populnea (Poplar Box), are ideal for their resilience and ability to provide shade. Acacia species, like Acacia aneura (Mulga) and Acacia melanoxylon (Blackwood), offer drought tolerance and vibrant yellow flowers. Callistemon (Bottlebrush) shrubs, such as Callistemon citrinus, attract pollinators with their bright red flowers, while Grevillea species, like Grevillea robusta (Silky Oak), add unique floral displays. Kangaroo Paw (Anigozanthos) and native grasses like Themeda triandra (Kangaroo Grass) and Poa labillardierei (Tussock Grass) thrive in well-drained soil and require minimal maintenance.

To ensure the health and longevity of these plants, several maintenance practices are essential. Regular watering, particularly for newly planted trees and shrubs, is crucial, with drip irrigation or soaker hoses recommended for deep watering. Mulching around the base of plants helps retain moisture, reduce weed growth, and regulate soil temperature. Pruning should be carried out to maintain plant shape, remove dead

or diseased branches, and promote healthy growth, adhering to Australian Standard AS4373 for tree pruning.

Fertilizing with a balanced fertilizer suitable for the specific plant species and avoiding over-fertilization is important for plant health. Pest and disease control should be monitored, using integrated pest management techniques such as biological controls and organic pesticides. Regular weed removal prevents competition for nutrients and water, and soil health can be maintained through periodic soil tests to check for nutrient deficiencies and pH levels, with appropriate amendments as needed.

By selecting suitable plant species and implementing proper maintenance practices, Gilgandra's green spaces can thrive as a sustainable green space that benefits the community and local ecosystem.





COMMON TUSSOCK GRASS



THEMEDA TRIANDRA (KANGAROO GRASS)



ACACIA ANEURA (MULGA)



ACACIA MELANOXYLON (BLACKWOOD)



ACACIA ANEURA BLOSSOM



EUCALYPTUS CAMALDULENSIS (RIVER RED GUM)



EUCALYPTUS POPULNEA (POPLAR BOX)



EUCALYPTUS CAMALDULENSIS BLOSSOM



GREVILLEA ROBUSTA (SILKY OAK)



KANGAROO PAW (ANIGOZANTHOS)



EUCALYPTUS POPULNEA (POPLAR BOX)



CALLISTEMON CITRINUS



# APPENDIX B - GREEN SPACE SCHEDULE

Green Space	Location	Asset Type	Function	Existing Facilities	Maintenance	Hierarchy
Coote Memorial Open Space	Gilgandra	Open space	Overnight parking area, Gilgandra Tractor and Machinery Club, Event Parking	Fencing	External contractor, excluding the Tractor Pull area and front of Gilgandra Museum.	Regional
Coote Visitors Rest Area and Memorial Park	Gilgandra	Visitor Centre	Visitor information, community welcome, events, galleries, cafes	Sound shell, community garden, yarn circle, EV charging stations, carparking	High level of embellishment - external contractor	NSW Regional
Apex Reserve	Gilgandra	Park	Unstructured Open Space	Town entry signage, frame for community signage, selter, no seating, digital signage planned	Mowing - internal	Town signage
Gilgandra Showgrounds	Gilgandra	Showgrounds	Annual show, community events, camping for events, event hire	Multiple pavilions, 2 x amenities blocks, men's shed, trotting track and stables, go kart track	Showground trust, GSC slasher	Regional
Ernie Knight Oval	Gilgandra	Park	Structured Sports Fields	Cricket nets and synthetic pitch, amenities block, kiosk, storage, perimeter fence and signage, informal car park, seating, bins	Irrigated, mown fortnightly, aerated, fertilized, line marking, weeding and clover spraying.	Local
Hunter Park	Gilgandra	Park	Park, visitor rest area, community	Skate park and shelter, swimming pool, shade structure, amenities, seating, clubhouse, tennis club and courts, BBQ's, lighting, CCTV, car parking, bins	Irrigated, moving and edging (weekly), litter pick up, BBQ cleaning, toilets (daily), annual fertilizing, tennis club maintenance (volunteers)	Regional
Michael Noonan Memorial Park & War Memorial	Gilgandra	Park	ANZAC Day, remembrance	Windmill walk, paved front and pathway, table and chairs, rising sun, Rohr's Memorial Garden (rose), Noonan Memorial, ANZAC wall, town clock, 4 x flag poles	Garden Club manage rose gardens, irrigation, mowed fortnightly	Local
McGrane Oval	Gilgandra	Park	Structured Sports Fields (rugby league, rugby union, cricket, athletics, netball, basketball)	Netball and basketball courts (asphalt x 4), 2 x aluminium portable grandstands, main grandstand with toilets and changerooms, 2 x kiosk, storage sheds, broadcast box, 2 x synthetic cricket nets, 1 x turf wicket, picket fence, lighting, car park, signage and entry gates, water tank and irrigation shed, 2 x long jump pits, 2 x discuss cages, electronic scoreboard, goal posts	Irrigation, weekly maintenance including line marking,	Regional
Clarice Sholz Park	Gilgandra	Park	Unstructured Open Space, green space for hospital visitors and patients	Windmill Walk loop, small play equipment, irrigation, seating, lighting, park signage, partly fenced	Irrigation, mowed weekly (during summer)	Local
Frog Hollow Wetlands	Gilgandra	Drainage line	Environmental, walkway	Windmill Walk loop, seating, Coote Lodge sign and garden bed	Monthly mowing and spraying	Local
Bencubbin St Park	Gilgandra	Park	Park	Play equipment, cricket nets, basketball half court, pump station	3 weekly mowing, edging, play equipment repairs, tree pruning	Local
Jordana Park	Gilgandra	Park	Memorial park	Playground, shelter, table, chairs, fencing, signage, irrigation, half court, mural and artwork bollards	irrigation, weekly mowing and edging	Local
CBD Plazas/Civic Spaces/Rear CBD	Gilgandra	Public realm	CBD activities	seating, stages, lawn areas, raised garden beds, power, lighting, CCTV, murals, Coote statue, signage, shelters, bins	weekly maintenance (cleaning, mowing etc)	Public realm
Jack McGirr Arboretum	Gilgandra	Environmental	Potential arboretum	Decommissioned well	not maintained	Local
Coote Lodge	Gilgandra	Park	Gilgandra Lifestyles Aged Care	Windmill, garden beds, lawn, irrigation	weekly maintenance, irrigation	Local
Gilgandra Cemetery	Gilgandra	Town cemeteries (Gilgandra and Tooraweenah)	Town cemeteries (Gilgandra and Tooraweenah)	Septic toilet in Gilgandra, portable shelters, interment walls, lawn section irrigation, boundary fencing, storage sheds	weekly mowing and edging,	Cemetery
Gil Signs x 4	Gilgandra	Town Signs	Wayfinding, visitor welcoming	Custom corten signage	Spraying	Town signage
Flora Reserve	Gilgandra	Park	Tourism	Wayfinding, unsealed car park, walking trails, shelters	TBC	Regional
Armatree Park	Armatree	Park	Unstructured Open Space, Memorial events (ANZAC)	Memorial, history boards, shelter	Fortnightly mowing and edging	Local
Kookaburra Memorial Park & Oval	Tooraweenah	Park	Structured Sports Fields, open space recreation, community events, memorial	Play equipment, BBQ, seats and shelters x 2, septic toilets, pathways, tennis courts, tennis hit up wall with basketball ring, tennis clubhouse, portable grandstand, cricket net, synthetic wicket, oval and park perimeter fence, bore, pump and water tank, memorial signage, flagpole, irrigation	Irrigation, weekly mowing and edging in summer,	Local
Windmill Walk - Path Network	Gilgandra	Pathway	Recreation, active travel, tourism	Shared path, 7 x windmills and signage, wooden footbridge, chain fence along the Newell, metal sculpture, blue chair and seating, shelters x 5, 2 x parking bays, weed management, mural under bridge	Fortnightly mowing and edging	Regional

TABLE 7. CURRENT GREEN SPACE SCHEDULE



# APPENDIX C - ACTION PLAN

26/27	4 YEAR	10 YEAR
General : Confirm maintenance service levels 1.1 (Design) Hunter Park        1.7 Volunteer acknowledgement 1.8 Flora Reserve POM 1.9 Armatree Park 1.10 Armatree Ware Memorial	1.1 (Delivery) Hunter Park 1.2 Digital signage 1.3 Gil Sign   1.6 Cooee Lodge Parklands      1.11 ArmaTree lighting	1.4 Aeropark Park 1.5 CDB       1.12 Tree Audit 1.13 Developer compliance
	2.1 McGrane Oval 2.2 Ernie Knight Oval	2.3 Tooraweenah
3.1 Real Country business case	3.2 Windmill Walk irrigation 3.3 Armatree tree planting	

TABLE 8. ACTION PLAN



15 Warren Road,  
GILGANDRA, NSW 2357  
P: (02) 6817 8800  
[www.gilgandra.nsw.gov.au](http://www.gilgandra.nsw.gov.au)