

# Community Update

*CHC, The GIL, Library Hub...*



# AGENDA

## What's on Today...

- Gilgandra Cultural Precinct & Activation
- Windmill Walk as strategic link
- Coo-ee Heritage Centre upgrades
- The GIL Library Hub update
- Proposed plaza upgrades
- Questions & answer
- What's New: Under the Gums, BIG Ideas, Signs
  
- **Next session**
  - Wednesday, 31 March @ 5.30pm



# GILGANDRA CULTURAL PRECINCT

## What GCP will achieve...

- Promotion of 3 key themes
- Increased visitation
- Community ownership
- Commercial lease opportunity
- Gatherings/functions
- Links with rural museum
- Complement CBD activation

### VISION

A multi-purpose community and cultural precinct that enables a sense of place and identity about Gilgandra and regional NSW for our communities and visitors.

### OUTCOMES

1. Local community ownership, use and pride of Gilgandra Cultural Precinct (GCP)
2. Recognition of Gilgandra and the GCP as tourist destinations in regional NSW
3. Support and encourage local and regional creative and artistic expression
4. Understanding and respect for local history and heritage
5. Increased visitation to benefit the regional and economic development of Gilgandra Shire

# GILGANDRA ACTIVATION BLUEPRINT

**TAKE  
BRAVE  
STEPS.**

TELL US YOUR IDEAS FOR THE  
FUTURE.

**BE PART  
OF THE  
ACTION.**

HAVE YOUR SAY.  
GILGANDRA ACTIVATION BLUEPRINT.

**START  
YOUR  
IDEA.**

COMPLETE YOUR EXPRESSION  
OF INTEREST HERE.

*“We are excited to present this to our community, and the plan focusses on bringing together current projects, plans and ideas and creating a single focused vision that we all are aware of and as a community we can collectively work towards.”*

*Dear Future,*

*In Gilgandra, I would like to see...*

*In the main street, I would like to do...*

Name: \_\_\_\_\_

Age: \_\_\_\_\_

# WINDMILL WALK TO MILLER ST

- Gilgandra Activation Blueprint
- Windmill Walk upgrades
- Painted windmills
- Coo-ee silhouettes + marchers story
- Laneways and linking to windmills, murals – INSPO
- The GIL Library Hub connections and events
- Coo-ee Oval Freedom Camping
- Link to Rural Museum



# CONSTRUCTION ELEMENTS



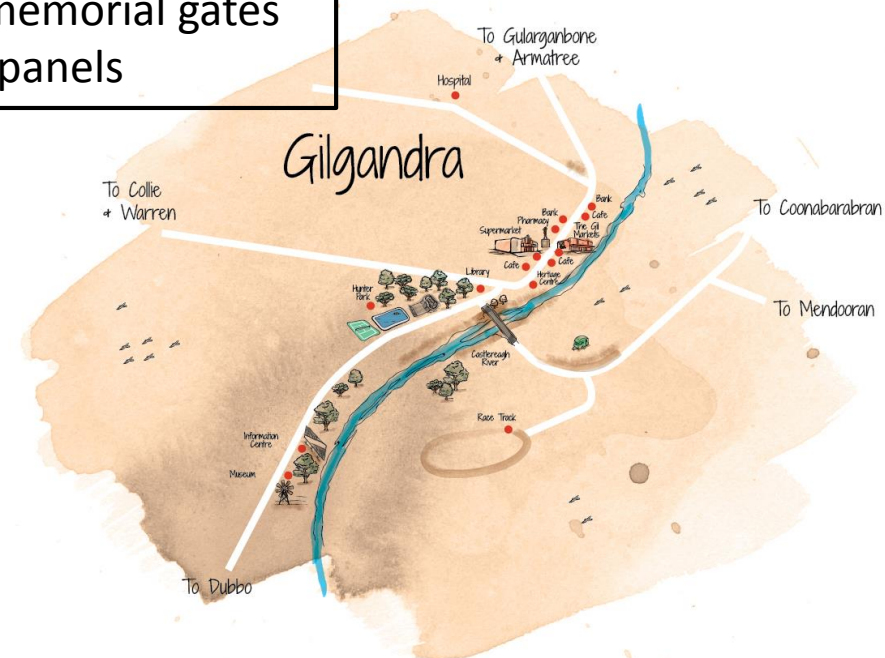
- Painting, flooring & new entrance
- Covered in verandah
- Decking area for view of Castlereagh
- Air-conditioning
- Upgrades to amenities, office and kitchen
- Upgrades to Allan Wise with glass, displays and entrance
- 360 counter for security and view
- Entrances to all galleries from central point

# EXTERNAL ELEMENTS



- Rural Museum links
- Signage
- Landscaping
- Security – Stage 2
- War memorial gates
- Solar panels

- Working windmill
- Car park (including relocation of lemon squeezer & BBQ and any suggestion for change in traffic movements between CHC & Rural Museum)
- Sculpture garden, bush tucker + yarn circles



# RURAL MUSEUM LINK

## OPPORTUNITIES & IDEAS



- Signage, entrance, landscaping and opening front
- Linking through Windmill Walk & drive access
- Joint tickets available online
- Local passports
- Success with recent community grant applications for upgrades



# Transition of the GIL...



- Stay within the GIL until construction of the Hub commences
- Working with stockists:
  - New private venture
  - Existing private businesses
  - Starting their own business
- VIC is Council's core service
- EOI in April for relocation in interim

A tall metal windmill structure, likely a water pump, stands against a dark blue night sky filled with stars. The windmill has a circular fan of blades and a sign that reads "SOUTHERN CROSS AUSTRALIA 8". In the foreground, the tops of trees with yellow and green leaves are visible. The bottom of the image features a horizontal bar with a rainbow color gradient.

# Timeline...

- DA has been approved
- Engineers reports for CC
- Tender - result to Council's June meeting
- Construction timeline
  - July – Dec 2021
- Transition period of the GIL
- Stakeholders updates

# Gilgandra Library and Community Hub Workshop

## **Our Vision**

*'The Library and Community Hub will be a dynamic community living room, creating a strong, modern centrepiece in the heart of the Gilgandra that attracts passers-by and celebrates our local identity'.*



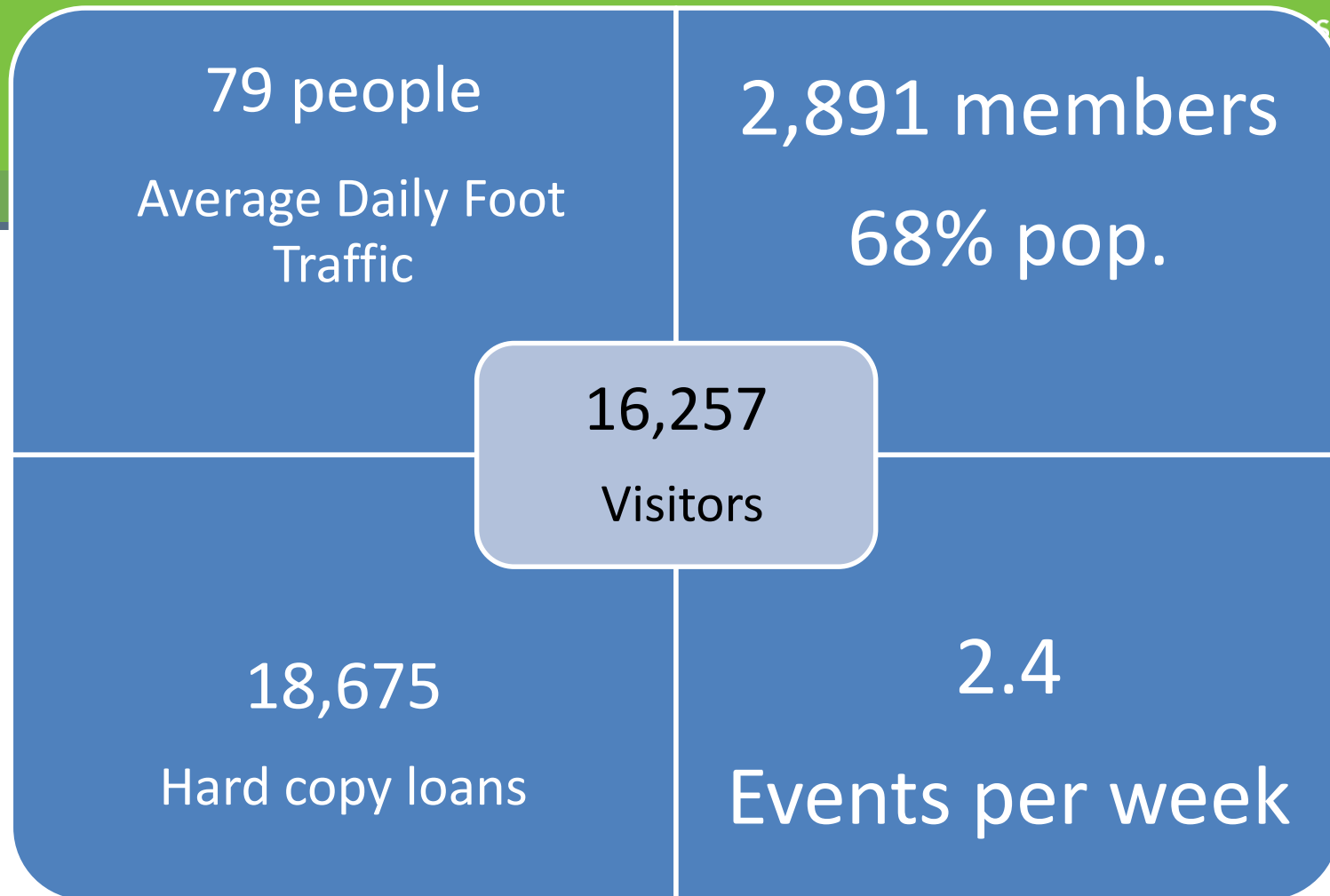
# Council's Goals



The goal of the new *Gilgandra Library & Community Hub* is to:

- Attract locals and visitors to the CBD invigorating Miller Street
- Expand the library to meet current and future demand for its services and offer additional services to more people
- Extend access to new technology and information services
- To support new and existing local businesses
- Expand access to services and facilities for locals and visitors

# Gilgandra Shire Library 2019/20



# Activities which will occur in the new building

**Information** for travellers

**Information** for the community

**Meetings** with services

**Local business meetings**

**One-on-one** tutoring and training

**Casual** social gatherings

**Community** gatherings

**Film** viewing

**Studying**

**Working**

**Relaxing** with a friend or alone

**Learning**- self guided or training

**Youth Technology Makerspace**- sound & film production

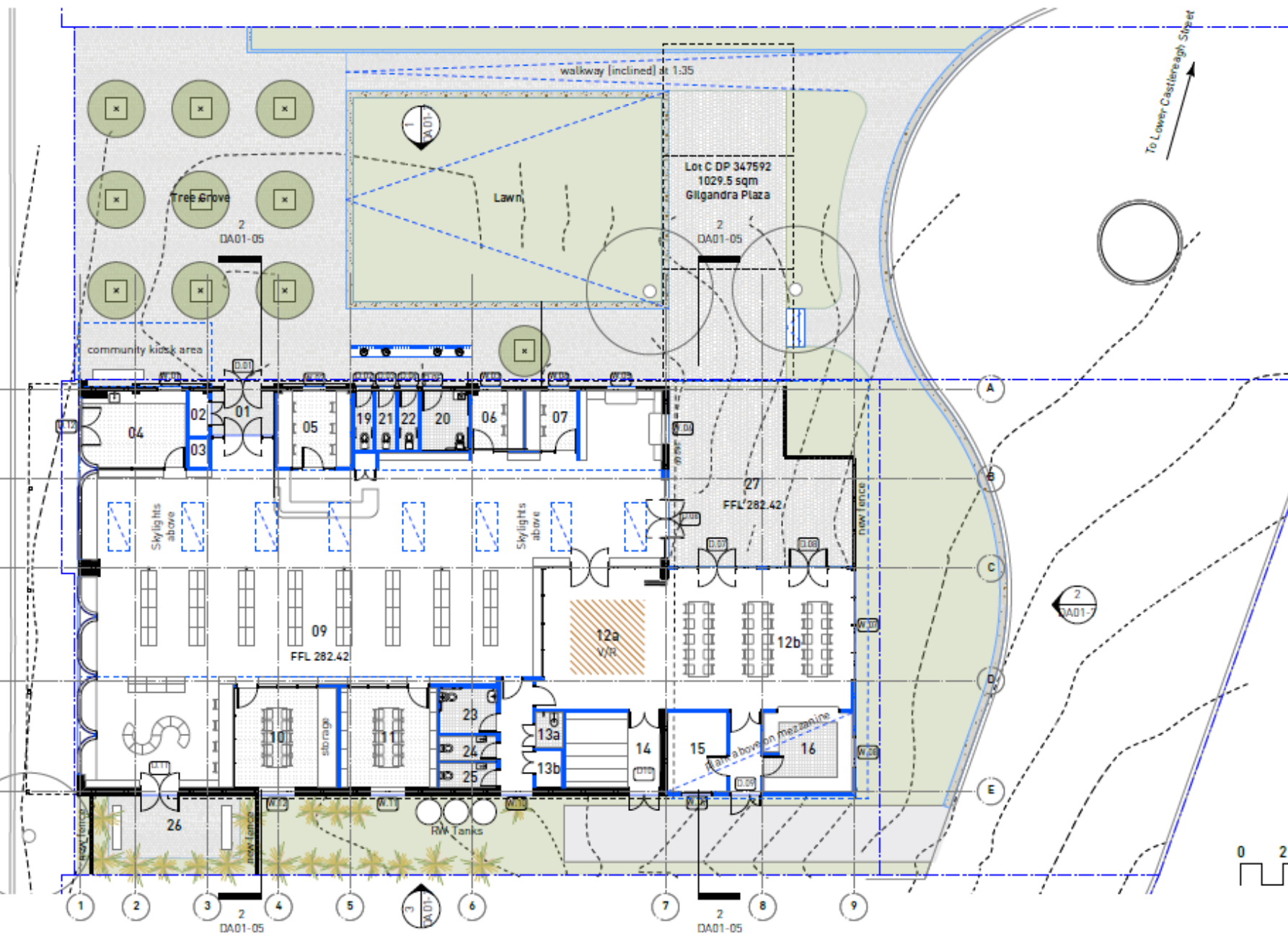
**Children's activities**- Storytime, after-school activities about technology and creativity

**Activities for youth**- technology, training and creativity

**Activities for adults**- creative, social and learning activities – technology training, workshops, guest speakers, films, groups, training.

**Community-led activities**- gatherings, festivals, performances

**Commercial and Community**- displays relating to business or community activities

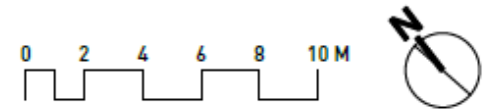


**Key**

- Existing fabric
- Proposed fabric
- Proposed overhead

**Room Schedule**

room no.	use	FFL (to AHD)	ceiling height (mm)	area (m <sup>2</sup> )
01	library - entry	282.42	4180	6
02	library - returns	282.42	4180	2
03	EDB	282.42	4180	1
04	business incubator	282.42	4180	17
05	office - staff	282.42	4180	13
06	bookable room	282.42	4180	7
07	bookable room	282.42	4180	7
09	library	282.42		306
10	meeting room	282.42	4180	22
11	meeting room	282.42	4180	22
12a	multipurpose/VR	282.42		37
12b	multipurpose room	282.42		61
13a	cleaners store	282.42	4180	2
13b	storage	282.42	4180	2
14	storage	282.42	4180	16
15	storage	282.42	4180	10
16	kitchen	282.42	4180	16
19	ambulant toilet	282.42	4180	3
20	accessible toilet	282.42	4180	6
21	toilet	282.42	4180	3
22	toilet	282.42	4180	3
23	accessible toilet	282.42	4180	7
24	ambulant toilet	282.42	4180	3
25	toilet	282.42	4180	3
26	outdoor reading	282.33	N/A	29
27	outdoor function	282.42	N/A	65



# Public amenities – December report

- The architects considered the relationships between the building and the plaza.
- Retaining the current amenity structure limits the potential for opening up the building to the plaza.
- There is currently limited space for gatherings and the existing amenity block is the focal point for the plaza, limiting the plaza's potential to become a welcoming multi-use public space.
- The architects explored several options to improve the relationship between the plaza and the new building, including:
  - Retaining all structures
  - Removing all structures
  - Keeping some structures

## History...

Construction: 2011

Cost: \$167,000

### **Strengths** of this option are identified as:

- The opportunity to improve connectivity between the plaza and the new building, allowing activities to spill outside into the plaza
- Providing amenities that service both the new Library and Community Hub, after hours activities that may occur in the new building and public access
- Improving safety within the plaza area by increasing activity in line with safer by design principles
- Reinforcing the link between Miller Street and the river frontage
- The cost of replacement is wholly met within the project grant budget.

### **Weaknesses** of this option:

- Amenities are 10 years old
- Demolition may be viewed as wasteful.

### **Community Steering Group**

- The Community Steering Group endorsed this recommendation on the proviso that the new design delivered publicly accessible toilet facilities.
- The importance of these to the Miller Street commercial areas was emphasised.
- The group also strongly recommended that temporary accessible public toilet facilities be provided in the main street during the construction period.



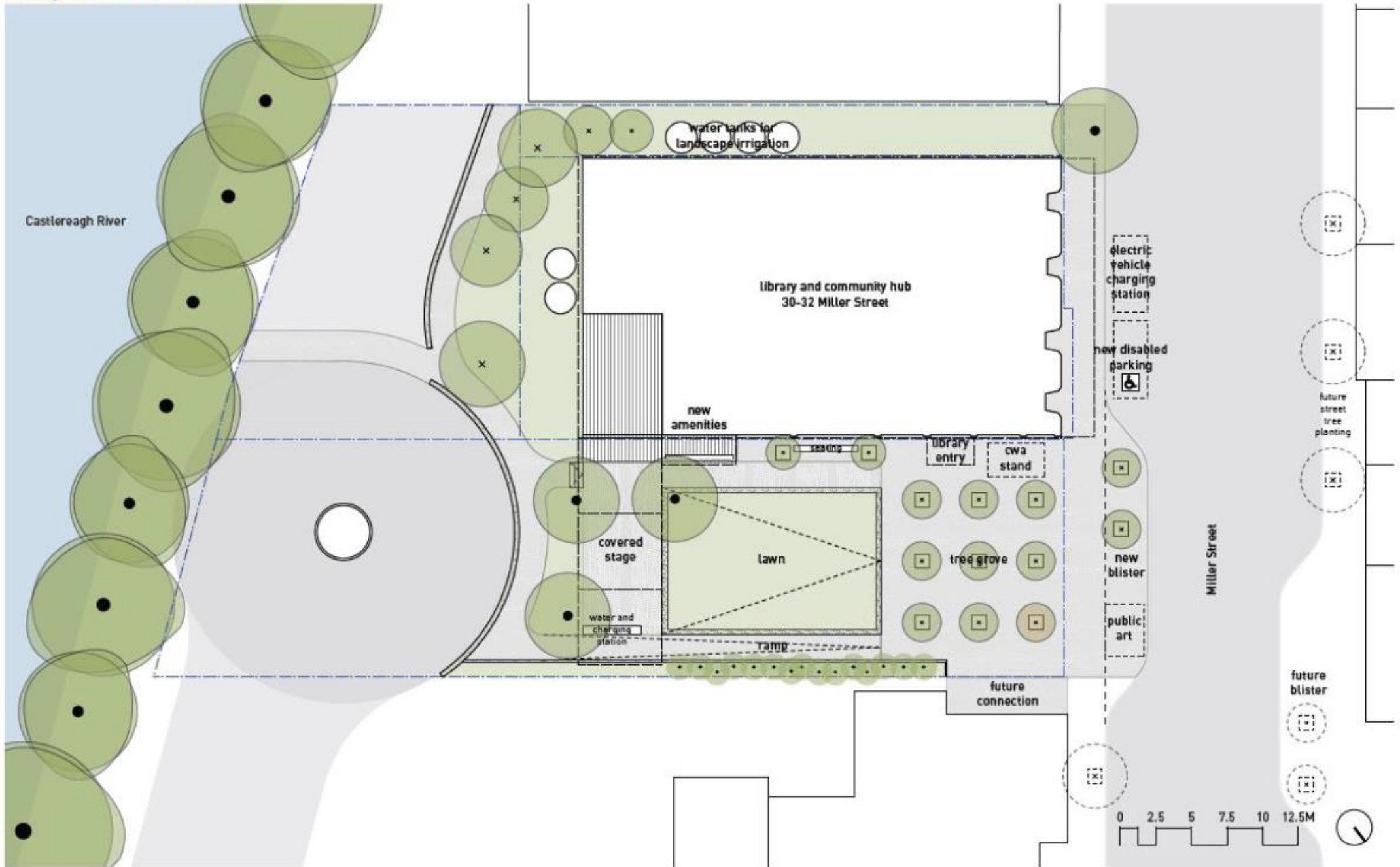
# High street grant application concept

Decision due early April on the application



# Gilgandra Plaza Upgrade

## Proposed Ground Plan



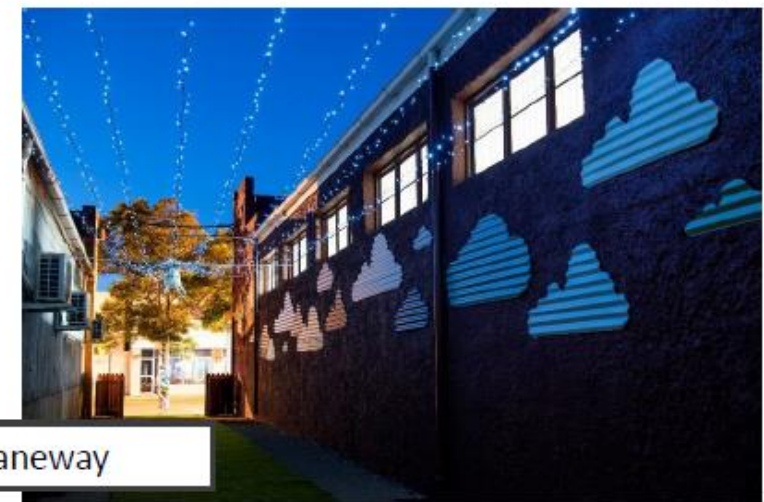


3Ds community space



The GIL Laneway

## AFTER...



# Have your say...

## Question & Answer...

- Website for feedback forms
- Call us 6817 8800
- [council@Gilgandra.nsw.gov.au](mailto:council@Gilgandra.nsw.gov.au)
  
- **Next session**
  - Wednesday, 31 March @ 5pm
  - Regular updates to continue

[www.gilgandra.nsw.gov.au](http://www.gilgandra.nsw.gov.au)





## BIG Ideas

### Business Improvement Grant (BIG Ideas) Program

- \$50,000 for local businesses
- \$5,000 or \$10,000
- Applications close May 2021

# OVERALL SIGNAGE PROJECT





A NIGHT UNDER THE GUMS  
**LIVE MUSIC**  
**LIGHT DISPLAYS**  
**POP-UP BAR**  
**FOOD STALLS**

APRIL 10 | 6PM - 10PM



SARAH LEETE



GILGANDRA 2827



GILGANDRA  
SHIRE COUNCIL

*Live > Enjoy > Grow*



GILGANDRA  
REGION



*gilgandra.nsw.gov.au*

15 Warren Road, Gilgandra > PO Box 23, Gilgandra NSW 2827

P 02 6817 8800 > council@gilgandra.nsw.gov.au

**gilgandra.nsw.gov.au**