

COPYRIGHT © WHEREIS® REGISTERED TRADEMARK OF SENSIS PTY LTD.

LOCALITY PLAN
NOT TO SCALE

UNAPPROVED
DRAWING

- EXISTING BUILDING (TYP.)
- EXISTING TREES (TYP.)
- EXISTING FENCE (TYP.)

PROPOSED AMPLITEL SITE. REFER
TO SHEET S1-1 FOR SITE LAYOUT

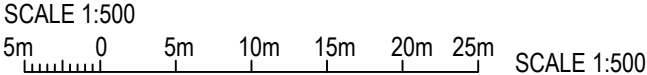
PROPOSED CRANE/EWP SET-UP
LOCATION (INDICATIVELY)

- EXISTING 915mm x 1200mm
MOON FOOT PLATFORM
- EXISTING EARTH BAR LOCATED AT H-FRAME
- EXISTING PIT (TYP.)

NOTES:

- ALL FEEDER ACCESS POINTS ON THE STRUCTURE MUST BE BIRD PROOFED AS PER EXTERNAL PLANT POLICY 003615.
- THIS DRAWING SET IS A PRELIMINARY DRAWING ONLY AND IS ISSUED FOR COMMENT. IT IS NOT A DETAILED SURVEY / STRUCTURAL DRAWING AND THEREFORE COULD BE SUBJECT TO CHANGE.

SITE ACCESS



SERVICES LEGEND

- EU ——— EU ——— UNDERGROUND GROUND ELECTRICAL LINE
- TC ——— TC ——— UNDERGROUND GROUND TELEPHONE LINE

NOTE: THIS DRAWING TO BE READ IN CONJUNCTION WITH SHEETS S1-1 & S1-2

PRELIMINARY

DO NOT
SCALE

F

PROPERTY DESCRIPTION

PART OF LOT 1 ON DP866465
PARISH OF (TBC)
COUNTY OF (TBC)

SITE STRUCTURE CO-ORDINATES (GDA94)
GPS READING ACCURACY: ± 10m
CENTRE OF MONOPOLE

LATITUDE	GDA 94 -31.71247
LONGITUDE	GDA 94 148.66283



ServiceStream

Level 7, 25 Smith Street, Parramatta, NSW 2150
T +61 3 9677 8888 | www.servicestream.com.au

ORDER	DRAWN	CHKD	AMENDMENT	EXAM	APPD	DATE	ISS
BTS-XXXX	NH	SS	PRELIMINARY - 80002779WO22SSNC - L7/L85/NR85/L18/L21/L26/NR26/NR36	HX	AG	23.04.25	1

©Amplitel PTY LTD as Trustee for the Towers Business Operating Trust (ABN 75 357 171 746) All rights reserved.



AMPLITEL
Part of the Telstra Group

TOWER AMS SITE NSW100613
GILGANDRA 76 WAMBOIN ST
SITE ACCESS AND LOCALITY PLAN
78 WAMBOIN ST, GILGANDRA, NSW 2827

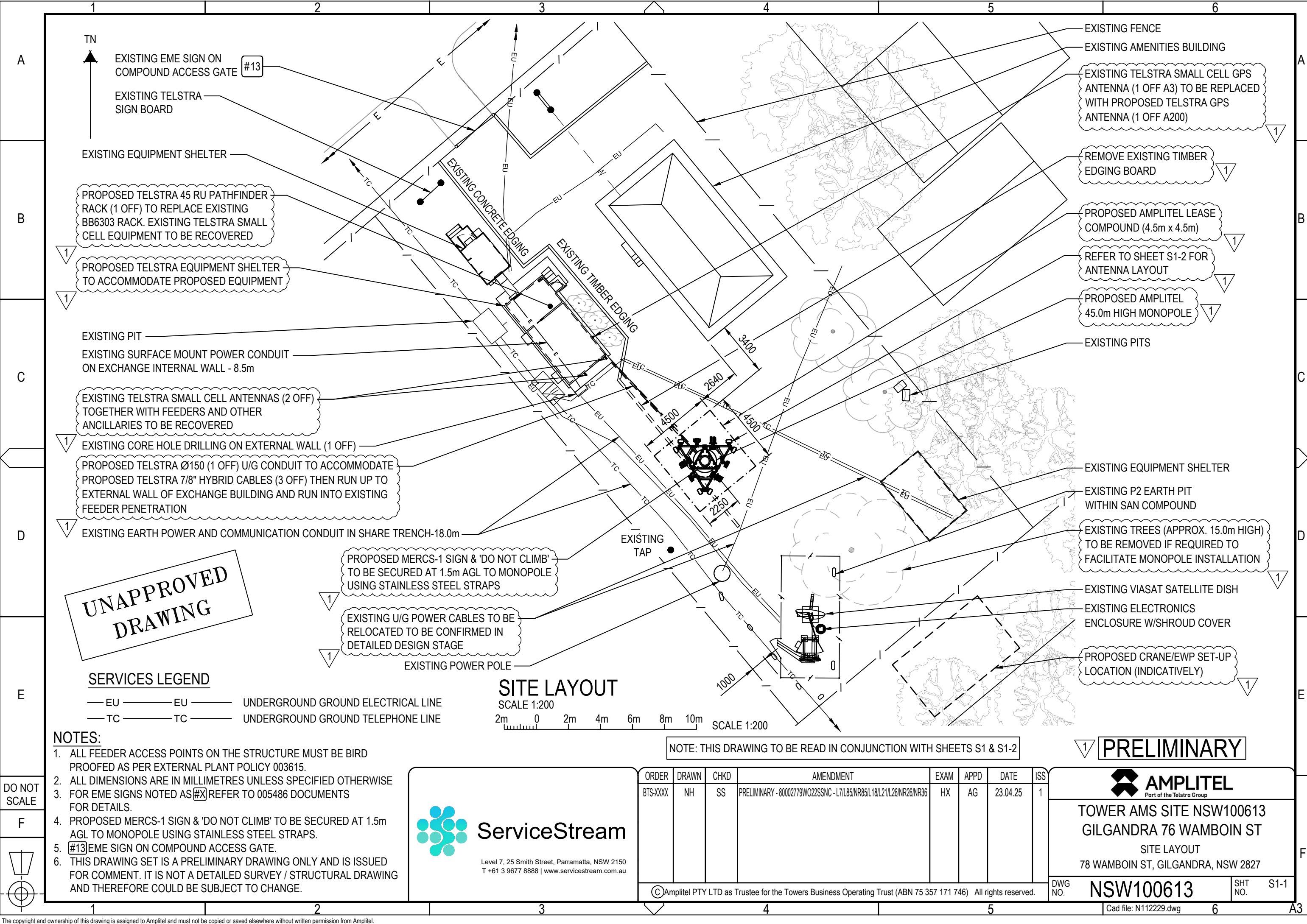
DWG
NO.

NSW100613

SHT
NO.

S1

Cad file: N112229.dwg



UNAPPROVED
DRAWING

SERVICES LEGEND

- EU ———— EU ———— UNDERGROUND GROUND ELECTRICAL LINE
- TC ———— TC ———— UNDERGROUND GROUND TELEPHONE LINE

NOTES:

1. ALL FEEDER ACCESS POINTS ON THE STRUCTURE MUST BE BIRD PROOFED AS PER EXTERNAL PLANT POLICY 003615.
2. ALL DIMENSIONS ARE IN MILLIMETRES UNLESS SPECIFIED OTHERWISE
3. FOR EME SIGNS NOTED AS #X REFER TO 005486 DOCUMENTS FOR DETAILS.
4. PROPOSED MERCS-1 SIGN & 'DO NOT CLIMB' TO BE SECURED AT 1.5m AGL TO MONOPOLE USING STAINLESS STEEL STRAPS.
5. #13 EME SIGN ON COMPOUND ACCESS GATE.
6. THIS DRAWING SET IS A PRELIMINARY DRAWING ONLY AND IS ISSUED FOR COMMENT. IT IS NOT A DETAILED SURVEY / STRUCTURAL DRAWING AND THEREFORE COULD BE SUBJECT TO CHANGE.



ServiceStream
Level 7, 25 Smith Street, Parramatta, NSW 2150
T +61 3 9677 8888 | www.servicestream.com.au

ORDER	DRAWN	CHKD	AMENDMENT	EXAM	APPD	DATE	ISS
BTS-XXXX	NH	SS	PRELIMINARY - 80002779WO22SSNC - L7/L85/NR85/L18/L21/L26/NR26/NR36	HX	AG	23.04.25	1

©Amplitel PTY LTD as Trustee for the Towers Business Operating Trust (ABN 75 357 171 746) All rights reserved.

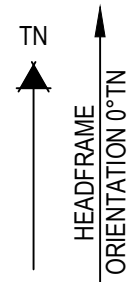
PRELIMINARY



TOWER AMS SITE NSW100613
GILGANDRA 76 WAMBOIN ST
SITE LAYOUT
78 WAMBOIN ST, GILGANDRA, NSW 2827

DWG NO.	NSW100613	SHT NO.	S1-1
---------	-----------	---------	------

Telstra Networks Wireless program Delivery Template - 017868P02 issue 11 02/12/2013



PROPOSED TELSTRA LTE700/LTE850/NR850
PANEL ANTENNAS (3 OFF A4, A5 & A6) ON
PROPOSED MOUNTS

PROPOSED TELSTRA RADIO 4490 (B26/B28)
(3 OFF) AND KA-6035 FILTERS (3 OFF) TO BE
INSTALLED ON PROPOSED RAIL MOUNTS

PROPOSED TELSTRA NR3600 PANEL ANTENNAS
(3 OFF A7, A8 & A9) ON PROPOSED MOUNTS

2 BEHIND EACH
PANEL ANTENNA

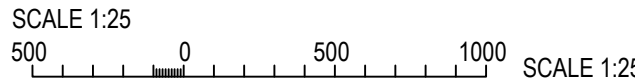
PROPOSED TELSTRA LTE700/LTE850/NR850/LTE1800/
LTE2100/LTE2600/NR2600 PANEL ANTENNAS
(3 OFF A1, A2 & A3) ON PROPOSED MOUNTS

PROPOSED TELSTRA TRIANGULAR HEADFRAME

PROPOSED AMPLITEL 45.0m HIGH MONOPOLE

PROPOSED TELSTRA RADIO 4466 (B1/B3/B7)
(3 OFF) WITH W&B JUNCTION BOXES (3 OFF)
(BELOW) ON PROPOSED MOUNTS

ANTENNA LAYOUT AT EL 43.7m AND RADIO LAYOUT AT EL'S 43.2m & 44.2m



UNAPPROVED
DRAWING

NOTE: THIS DRAWING TO BE READ IN CONJUNCTION WITH SHEETS S1 & S1-1

PRELIMINARY

DO NOT
SCALE

F

NOTES:

- FOR EME SIGNS NOTED THUS #X REFER TO 005486 FOR DETAILS.
- #2 EME SIGN TO BE SECURED BEHIND EACH PANEL ANTENNAS.



ServiceStream

Level 7, 25 Smith Street, Parramatta, NSW 2150
T +61 3 9677 8888 | www.servicestream.com.au

ORDER	DRAWN	CHKD	AMENDMENT	EXAM	APPD	DATE	ISS
NA26528.01	NH	SS	PRELIMINARY - 80002779WO22SSNC - L7/L85/NR85/L18/L21/L26/NR26/NR36	HX	AG	23.04.25	1

© Telstra Corporation Limited ABN 33 051 775 556 All rights reserved.



MOBILE NETWORK SITE 384746
GILGANDRA 76 WAMBOIN ST
ANTENNA LAYOUT
78 WAMBOIN ST, GILGANDRA, NSW 2827

DWG
NO.

N112229

SHT
NO.

S1-2

Cad file: N112229.dwg

6

A3

UNAPPROVED
DRAWING

NOTES:

1. ALL FEEDER ACCESS POINTS ON THE STRUCTURE MUST BE BIRD PROOFED AS PER EXTERNAL PLANT POLICY 003615.
2. ALL DIMENSIONS ARE IN MILLIMETRES UNLESS SPECIFIED OTHERWISE
3. FOR EME SIGNS NOTED AS #X REFER TO 005486 DOCUMENTS FOR DETAILS.
4. #2 EME SIGN TO BE SECURED TO THE REAR OF EACH ANTENNA.
5. #13 EME SIGN ON COMPOUND ACCESS GATE.
6. PROPOSED MERCS-1 SIGN & 'DO NOT CLIMB' TO BE SECURED AT 1.5m AGL TO MONOPOLE USING STAINLESS STEEL STRAPS.
7. THIS DRAWING SET IS A PRELIMINARY DRAWING ONLY AND IS ISSUED FOR COMMENT. IT IS NOT A DETAILED SURVEY / STRUCTURAL DRAWING AND THEREFORE COULD BE SUBJECT TO CHANGE.

NORTH EAST ELEVATION

SCALE 1:150

3m 0 3m 6m SCALE 1:150

NOTE: THIS DRAWING TO BE READ IN CONJUNCTION WITH SHEET S3-1

PRELIMINARY



ServiceStream

Level 7, 25 Smith Street, Parramatta, NSW 2150
T +61 3 9677 8888 | www.servicestream.com.au

ORDER	DRAWN	CHKD	AMENDMENT	EXAM	APPD	DATE	ISS
BTS-XXXX	NH	SS	PRELIMINARY - 80002779W022SSNC - L7/L85/NR85/L18/L21/L26/NR26/NR36	HX	AG	23.04.25	1

© Amplitel PTY LTD as Trustee for the Towers Business Operating Trust (ABN 75 357 171 746) All rights reserved.



Part of the Telstra Group

TOWER AMS SITE NSW100613

GILGANDRA 76 WAMBOIN ST

NORTH EAST ELEVATION

78 WAMBOIN ST, GILGANDRA, NSW 2827

DWG NO.

NSW100613

SHT NO.

S3

Cad file: N112229.dwg

A3V

TELSTRA MOBILES ANTENNA CONFIGURATION TABLE

ANTENNA No	ANTENNA TYPE & SIZE H x W x D	ANTENNA ACTION REQUIRED	ANTENNA HEIGHT C/L A.G.L.	PHYSICAL ANTENNA BEARING (°T)	SECTOR NO. & TECHNOLOGY
A1	COMMSCOPE RVVPX310.11B-T2H PANEL 2533 x 350 x 208mm	INSTALL	43.7m	0°	S1: LTE700/LTE850/NR850 S1: LTE700/LTE850/NR850
					S1: LTE1800/LTE2100/LTE2600/NR2600 S1: LTE1800/LTE2100/LTE2600/NR2600
					S1: LTE1800/LTE2100/LTE2600/NR2600 S1: LTE1800/LTE2100/LTE2600/NR2600
A2	COMMSCOPE RVVPX310.11B-T2H PANEL 2533 x 350 x 208mm	INSTALL	43.7m	120°	S2: LTE700/LTE850/NR850 S2: LTE700/LTE850/NR850
					S2: LTE1800/LTE2100/LTE2600/NR2600 S2: LTE1800/LTE2100/LTE2600/NR2600
					S2: LTE1800/LTE2100/LTE2600/NR2600 S2: LTE1800/LTE2100/LTE2600/NR2600
A3	COMMSCOPE RVVPX310.11B-T2H PANEL 2533 x 350 x 208mm	INSTALL	43.7m	240°	S3: LTE700/LTE850/NR850 S3: LTE700/LTE850/NR850
					S3: LTE1800/LTE2100/LTE2600/NR2600 S3: LTE1800/LTE2100/LTE2600/NR2600
					S3: LTE1800/LTE2100/LTE2600/NR2600 S3: LTE1800/LTE2100/LTE2600/NR2600
A4	COMMSCOPE RVVPX310.11B-T2H PANEL 2533 x 350 x 208mm	INSTALL	43.7m	0°	S1: LTE700/LTE850/NR850 S1: LTE700/LTE850/NR850
					S1: SPARE S1: SPARE
					S1: SPARE S1: SPARE
A5	COMMSCOPE RVVPX310.11B-T2H PANEL 2533 x 350 x 208mm	INSTALL	43.7m	120°	S2: LTE700/LTE850/NR850 S2: LTE700/LTE850/NR850
					S2: SPARE S2: SPARE
					S2: SPARE S2: SPARE
A6	COMMSCOPE RVVPX310.11B-T2H PANEL 2533 x 350 x 208mm	INSTALL	43.7m	240°	S3: LTE700/LTE850/NR850 S3: LTE700/LTE850/NR850
					S3: SPARE S3: SPARE
					S3: SPARE S3: SPARE
A7	ERICSSON AIR3258 PANEL 793 x 408 x 235mm	INSTALL	43.7m	0°	S1: NR3600 S1: NR3600
A8	ERICSSON AIR3258 PANEL 793 x 408 x 235mm	INSTALL	43.7m	120°	S2: NR3600 S2: NR3600
A9	ERICSSON AIR3258 PANEL 793 x 408 x 235mm	INSTALL	43.7m	240°	S3: NR3600 S3: NR3600
A200	KAEUS KA-7005-1110 ANTENNA	INSTALL	BASE OF GPS 4.8m	0°	-
A1 (OLD)	COMMSCOPE DB583E-SN OMNI	REMOVE	6.4m	0°	-
A2 (OLD)	COMMSCOPE DB583E-SN OMNI	REMOVE	6.4m	0°	-
A3 (OLD)	EOSENBERGER GPS-36-N-SA OMNI	REMOVE	4.8m	0°	-

UNAPPROVED
DRAWING

NOTE: THIS DRAWING TO BE READ IN CONJUNCTION WITH SHEET S3

PRELIMINARY



ServiceStream

Level 7, 25 Smith Street, Parramatta, NSW 2150
T +61 3 9677 8888 | www.servicestream.com.au

© Telstra Corporation Limited ABN 33 051 775 556 All rights reserved.



MOBILE NETWORK SITE 384746

GILGANDRA 76 WAMBOIN ST

ANTENNA CONFIGURATION TABLE

78 WAMBOIN ST, GILGANDRA, NSW 2827

DWG
NO.

N112229

SHT
NO.

S3-1

Cad file: N112229.dwg

A3V