

COMMUNITY COLLABORATION

Community Strategic Plan...

20 February 2025

COMMUNITY SESSION

Welcome...



COMMUNITY SESSION

What's planned...

- Expectations of today's session
- 15 mins
- Submit your questions + top priorities
- This is Gilgandra
 - The role of Council & Councillors
 - Our Vision & the Community Strategic Plan
- Challenges + Opportunities
- 20 mins
- We're listening: Results of the 2024/25 Survey
- What's next for Gilgandra Region + major projects
- 10 mins
- Question & answer + Have Your Say – top priorities

COMMUNITY SESSION

What's your top priorities...

- What's your question/s for Council?
- Top 3 priorities – start of the session
- _____
- _____
- _____
- Top 3 priorities - end of meeting
- _____
- _____
- _____

This is Gilgandra —
Community Strategic Plan

In 2021 the median age in Gilgandra was 46 years which remains unchanged compared to 2016. The percentage of the community 60 years or older was 31.8%. For New South Wales this was 23.5%.

GILGANDRA SHIRE COUNCIL

This is Gilgandra...



- Council assets \$408m
- ~1200kms road network
- Staff 260 employees
- Budget \$78m

- Population growing (3.8% 2016 - 2021)
- Gilgandra's median age is 46 years
- Ag, health, public administration, education and retail
- Visitors spend av. \$186 per night in Gilgandra



ORANA LIVING



GILGANDRA LIFESTYLES

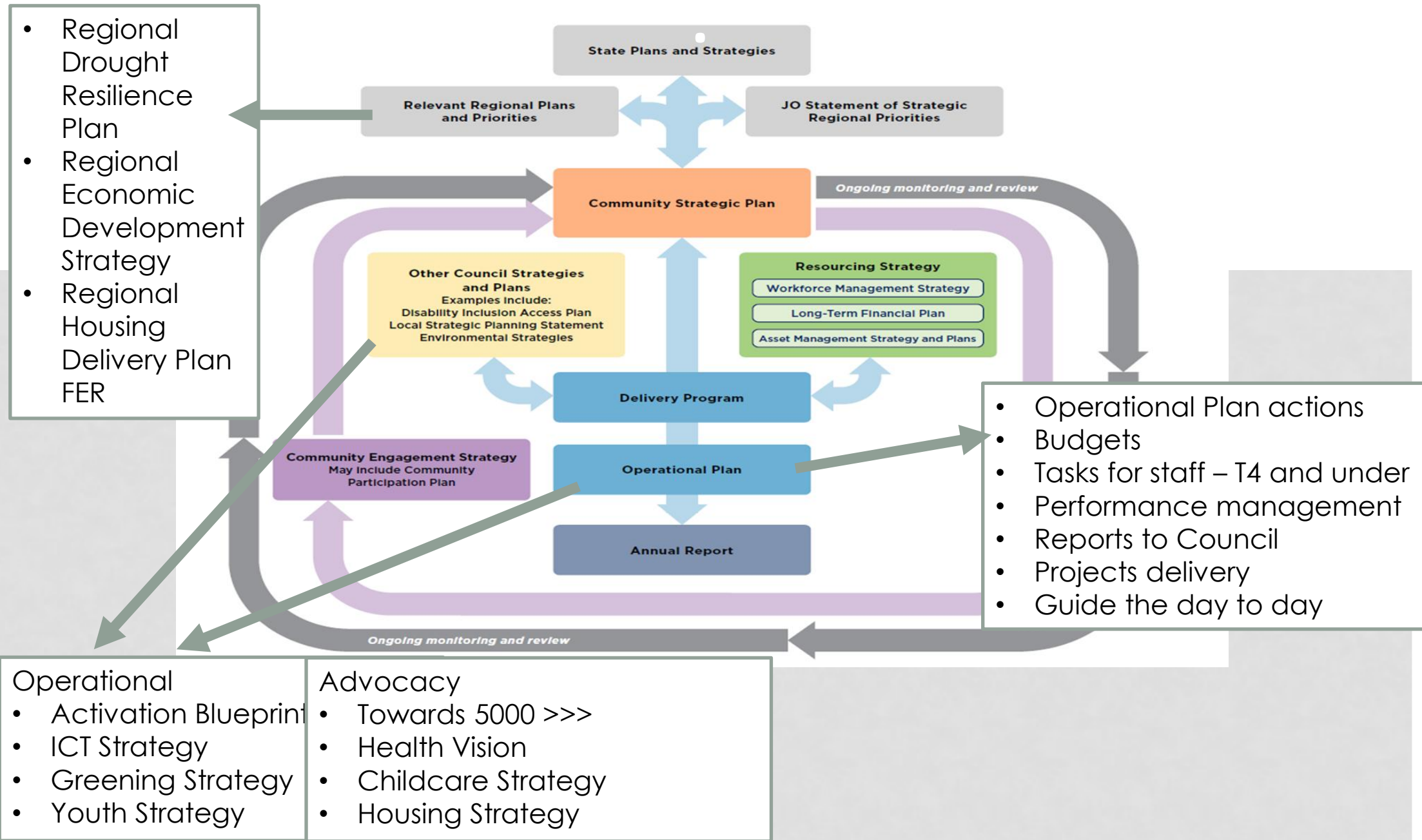
Community + residential choices

Cooee Lodge Hostel | Community Care | Jack Towney Hostel
Cooee Retirement Village | Home Care Packages



GILGANDRA
REGION

GSC + Strategy Alignment



GILGANDRA REGION

Our Vision...

A vibrant region to *Live > Enjoy > Grow* that is
inclusive, resilient and progressive.

Our Themes...
**live,
enjoy,
grow &
lead.**

@gilgandra_region

Live

- > A community with improved roads and transport network
- > A community with inter-generational infrastructure and facilities
- > A community where services enhance liveability

Enjoy

- > An active and thriving community
- > A community that celebrates its culture and heritage
- > A region that offers a vibrant tourist destination experience

Grow

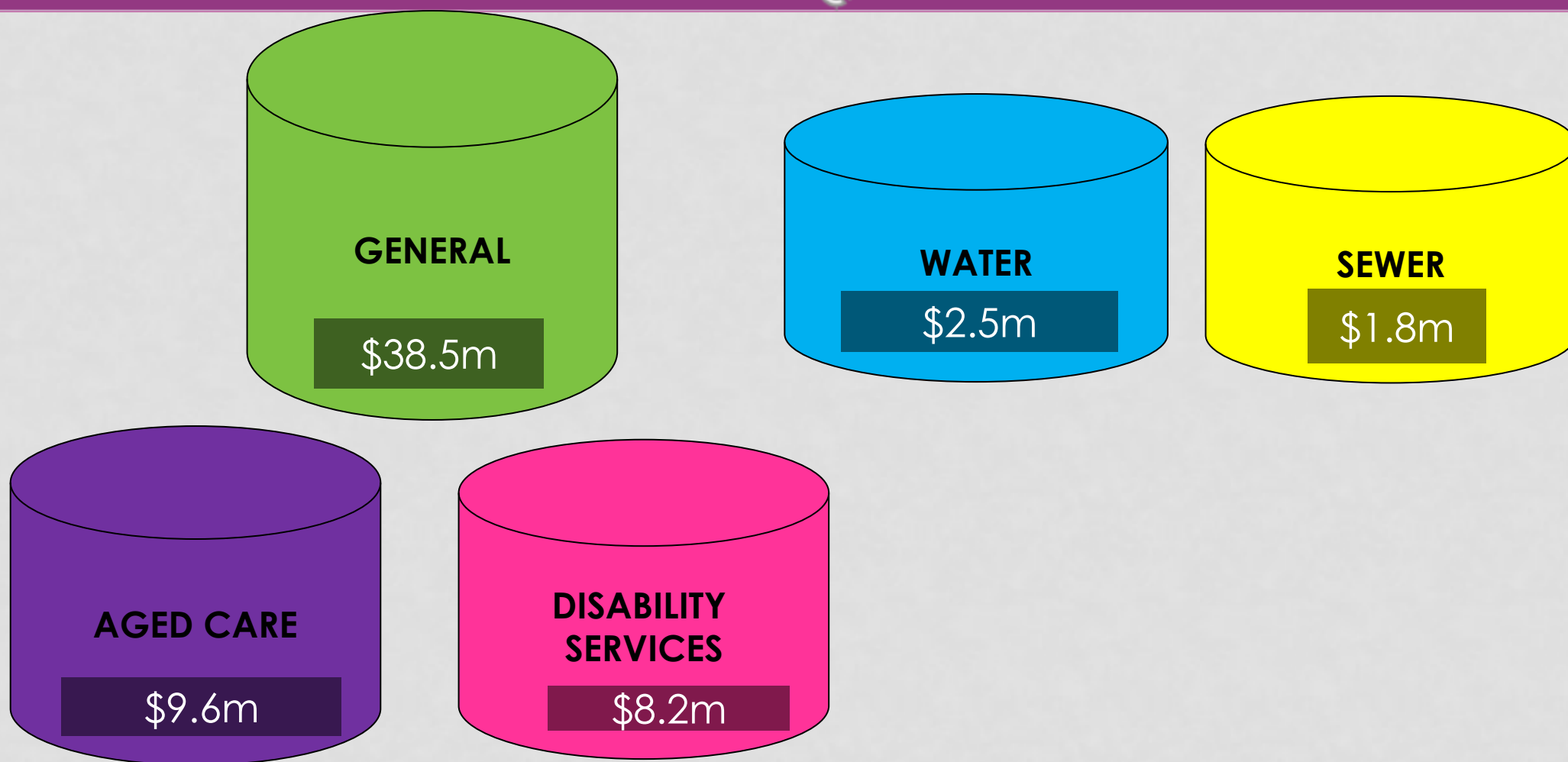
- > A region with resilient and innovative businesses
- > A region growing towards 5000
- > A region that capitalises on opportunities for economic growth

Lead

- > An innovative council that is an employer of choice within the community
- > A progressive council engaged with the community
- > A council valued by our community

2024/25 BUDGETS

Five "buckets"...



2021/24

STATE OF OUR REGION REPORT



www.gilgandra.com.au

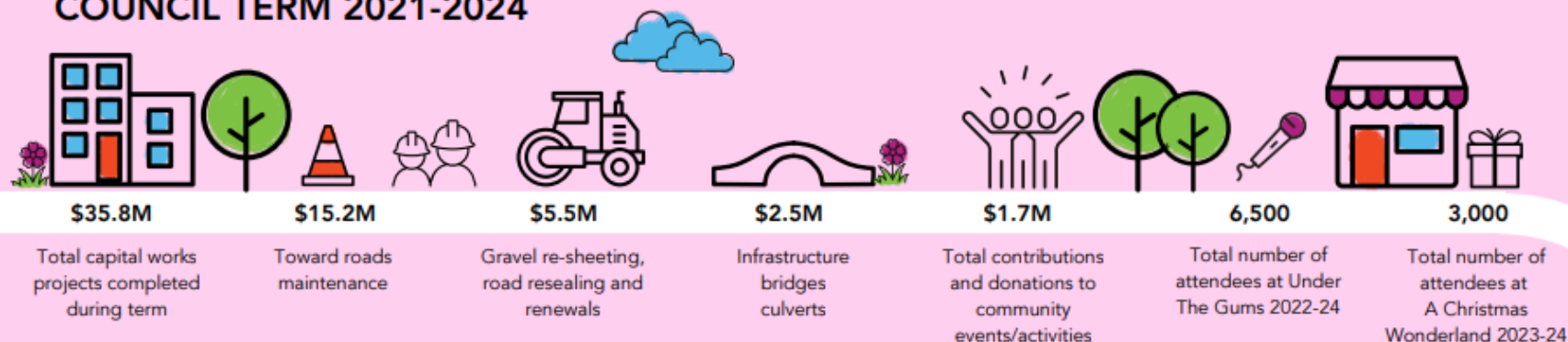
**LIVE
ENJOY
GROW**
gilgandra.nsw.gov.au



COUNCIL *highlights* IN REVIEW



COUNCIL TERM 2021-2024



Grow Gilgandra



Shop Local

Christmas Shop Local:

- Over 79,000 entries 2021-24
- Equating to \$6.1M in receipts

BIG Ideas

26 successful Grant Applicants:

- \$101,887 of funding Round 1
- \$50,000 of funding Round 2

It's GREAT

Local events fund launched 2023:

- 8 Local events funded
- \$50,000 of funding

Gilgandra Cultural Precinct

Coo-ee Heritage Centre

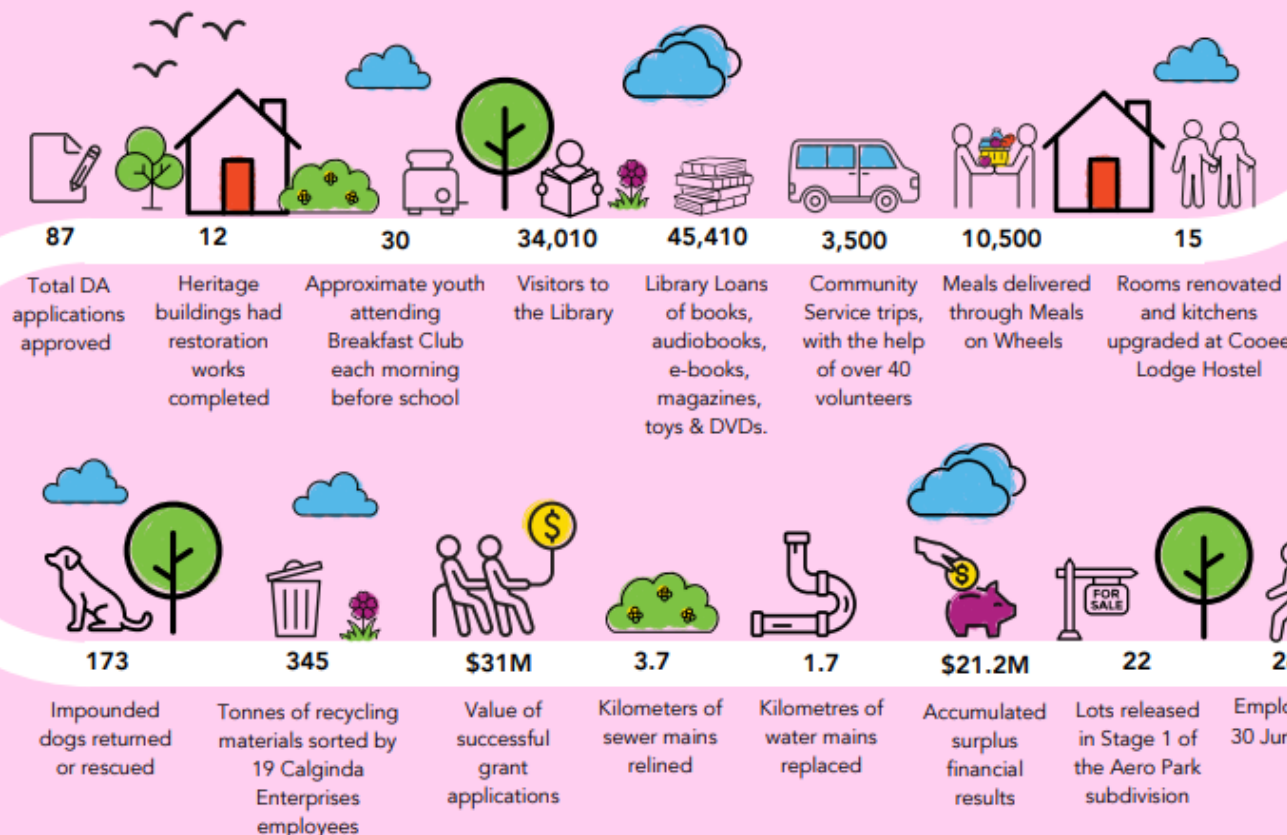
- September 2022 Grand Opening
- 11 Art Gallery Exhibitions
- 52,146 Visitors to CHC

The Meeting Place

- September 2023 Joy Trudgett Gallery Opened
- 20+ people attending regular Stakeholder meetings
- 27+ groups involved in the cultural film

Landscaping and Murals

- 100+ responses from the community towards the Sound Shell Mural Survey
- 6 new murals painted
- Community Gardens established
- 7 Windmills decorated with artworks from Orana Living clients including installation of new plaques

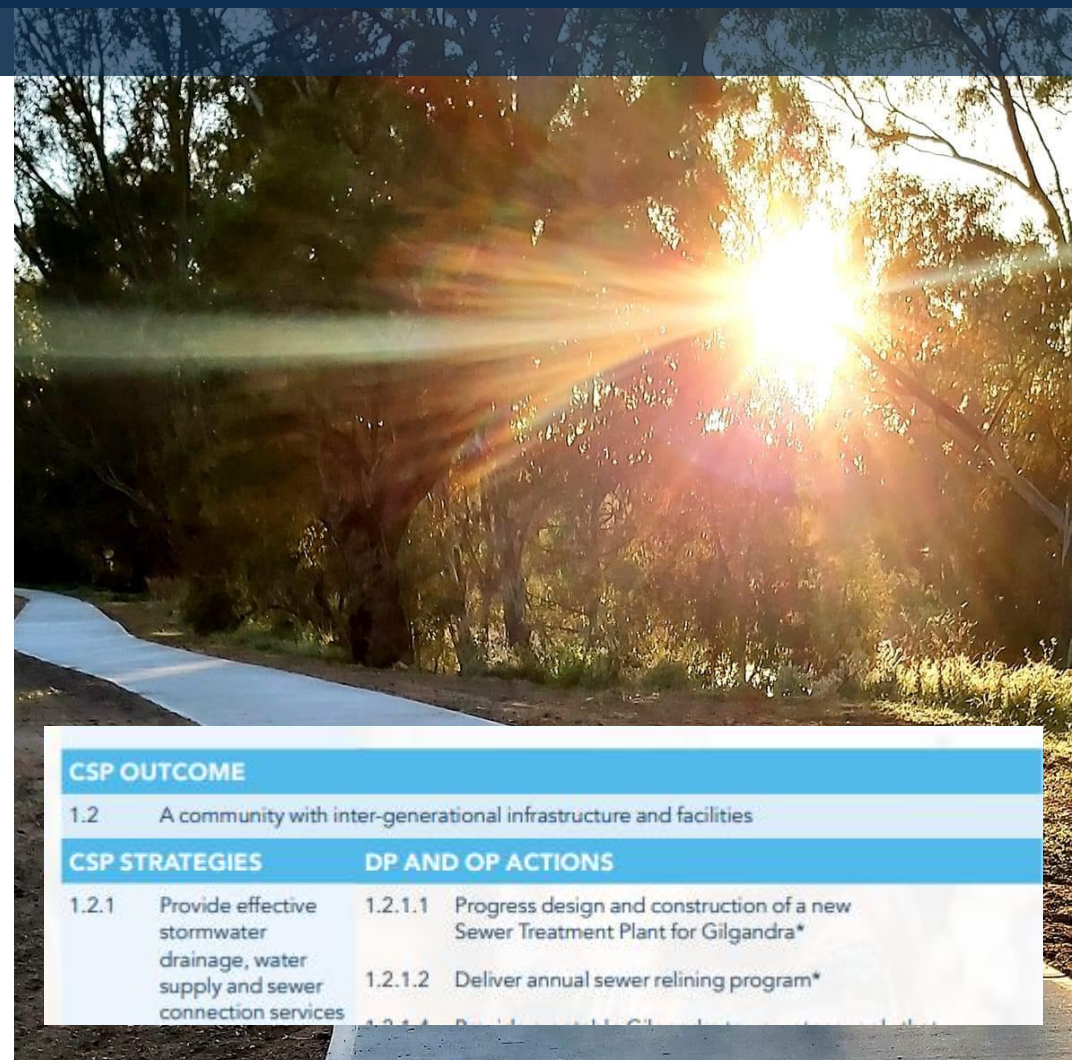


Delivery Program +
Operational Plan > in Action...



Sewer Treatment Plant...

- CSP 1.2.1 + 1.2.1.1
- Best practice pricing over a number of years, increasing charges by 7% each year. Not required for operation; allows us to put money into Reserves each year for upgrade to the Plant.
- Planning commenced ~10+ years ago
- Planned for 2025/26 – 26/27
- LTFP \$20M inc. 90% external funding
- \$2M GSC contribution from planning and best-practice pricing



CSP OUTCOME

1.2 A community with inter-generational infrastructure and facilities


CSP STRATEGIES

DP AND OP ACTIONS

1.2.1	Provide effective stormwater drainage, water supply and sewer connection services	1.2.1.1	Progress design and construction of a new Sewer Treatment Plant for Gilgandra*
		1.2.1.2	Deliver annual sewer relining program*
		1.2.1.3	Build and maintain Gilgandra Sewer Treatment Plant

GILGANDRA CULTURAL PRECINCT

CHC, Windmill Walk, Overnight Parking, Gil Museum...

- 
- Commenced planning 2018 – Council and Community
 - Gilgandra Cultural Precinct Strategic Plan endorsed
 - LTFP + Funding – local, state and Federal
 - Now moving into implementation and growth within the Precinct.
 - Community Strategic Plan
 - 2.2 A community that celebrates its culture and heritage
 - 1.2 A community with inter-generational infrastructure and facilities

COMMUNITY STRATEGIC PLAN

Collaborative strategies Towards 5000...



Health

- Advocacy – mental health, outreach health, telehealth, support services (e.g. housing, child care), resource, infrastructure
- Promotion of health and wellbeing campaigns – Get Gil Active, Interagencies
- Volunteerism
- Community events and welcome new resident initiatives – health professionals

Child Care

- Outside of School Hours Care and Vacation Care – Council or industry
- 0-5 – increased services, support family daycare, advocacy, promotion of benefits
- Planning to allow for development

Village Management

- Tooraweenah Recreation Precinct, Arthur Butler Aviation, events, tourism, industry, signage
- Armatree Memorial Precinct, lighting, trees, access, tourism, signage

COMMUNITY STRATEGIC PLAN

Collaborative strategies Towards 5000...

Youth

- DRAFTs expected in March
- Additional in-school consultation
- Themes are around youth engagement, activities, pathways and support

Greening

- DRAFTs expected in March
- To be included in CSP process including budgets and actions
- Themes are showing Hunter Park, AeroPark, Windmill Walk, maintenance and resourcing
- Council will adopt 2022/23 – 2031/32 Community Strategic Plan

COMMUNITY SESSION

Challenges + opportunities...

What do you see as the challenges and opportunities for
Gilgandra Region?

How we're doing —
here's what you said...



Respondent details

	2015	2021	2025
Number of survey responses	41	321	212
Respondent age	36-45 (28%) 56-65 (18%)	56-65 years (26%) 18-35 (23%)	36-45 (23%) 18-35 (19%)
Gender split	65% female	72% female	75% female
Lived in Region for?	20 years + (54%) < 5 years (17%)	20 years + (63%) < 5 years (14%)	20 years + (58%) < 5 years (17%)



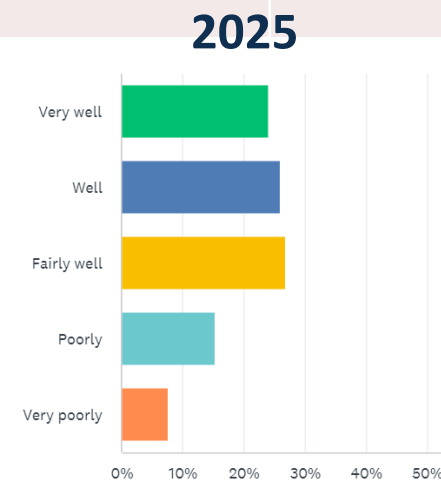
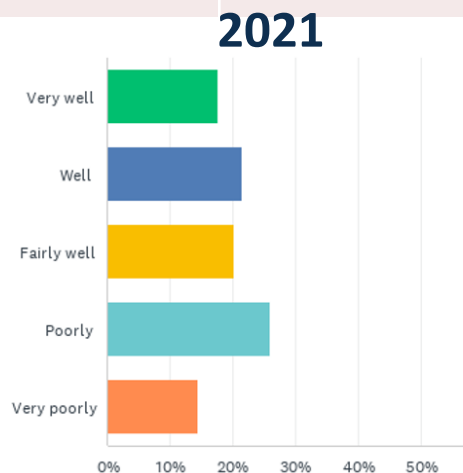
Live > Visit > Start/Grow a business?

	2021		2025
Recommend Gilgandra as a place to LIVE	82%	↑	87%
Recommend Gilgandra as a place to VISIT	81%	↑	88%
Recommend Gilgandra as a place to start/GROW a business	54%	↑	76%

Interaction Satisfaction

49% of respondents contacted Council in the last 12 months. The majority of respondents prefer to communicate with Council **by email and phone (30% each)**. **In person** followed **29%**.

	2021	2025	What this says?
Contact channels	Phone (52%) In person (27%)	Phone (45%) In person (31%)	More people are coming in to see us instead of calling us
How Council handled concerns	1. Poorly (26%) 2. Well (22%)	1. Fairly well (27%) 2. Well (26%)	Council is handing complaints BETTER



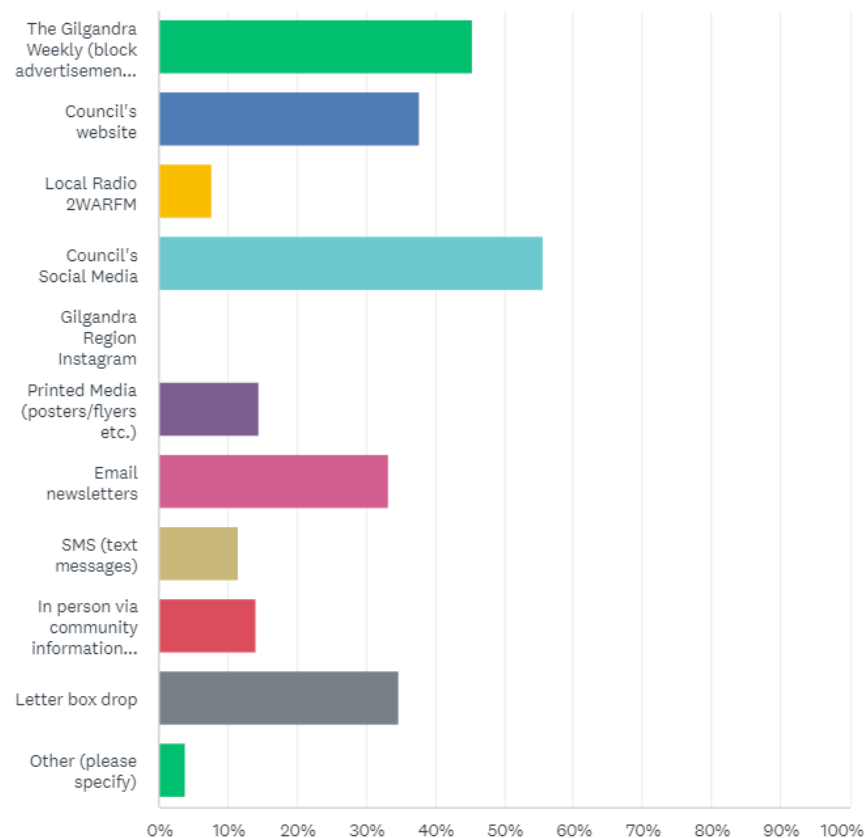
How people like Council to communicate with them...

The majority of respondents prefer to hear about Council news through **Council's Social Media (56%)**.

The Gilgandra Weekly was the second highest communication channel (**45%**).

Council's website, email newsletters and letter box drop were all well rated (above 33%).

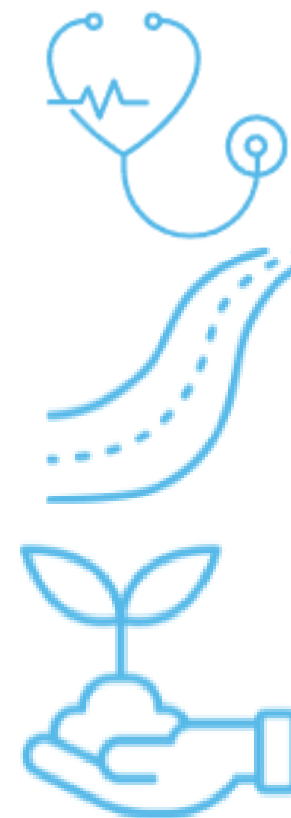
2021 and 2016 saw Gilgandra Weekly as the highest with 31% and 63% respectively.



Council Facilities & Services...

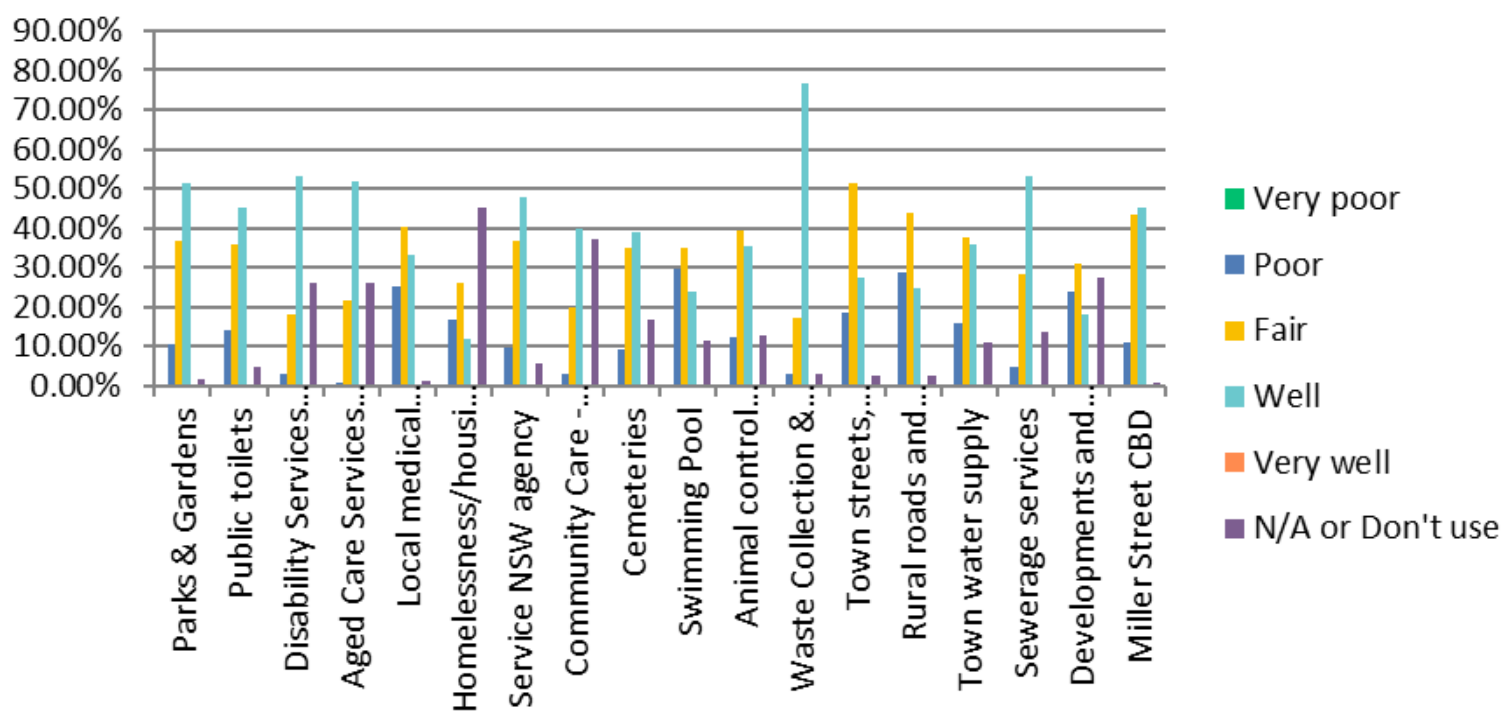
Most **important LIVE** facilities and services:

Local Medical Centre/Dentists, Waste Collection & Recycling, Public Toilets, Parks and Gardens, Sewerage services, Aged Care Services, Miller Street CBD, Town streets, footpaths and walkways, Rural roads and bridges, and the Swimming Pool were considered the most important facilities.



LIVE Services...

Performance - How well does Council deliver the service or facility?

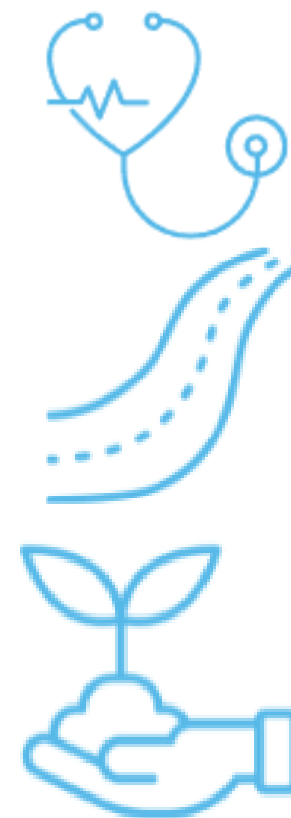


No services were rated 'Very Well' or 'Very Poor'

Council Facilities & Services...

Most important **ENJOY** facilities and services:

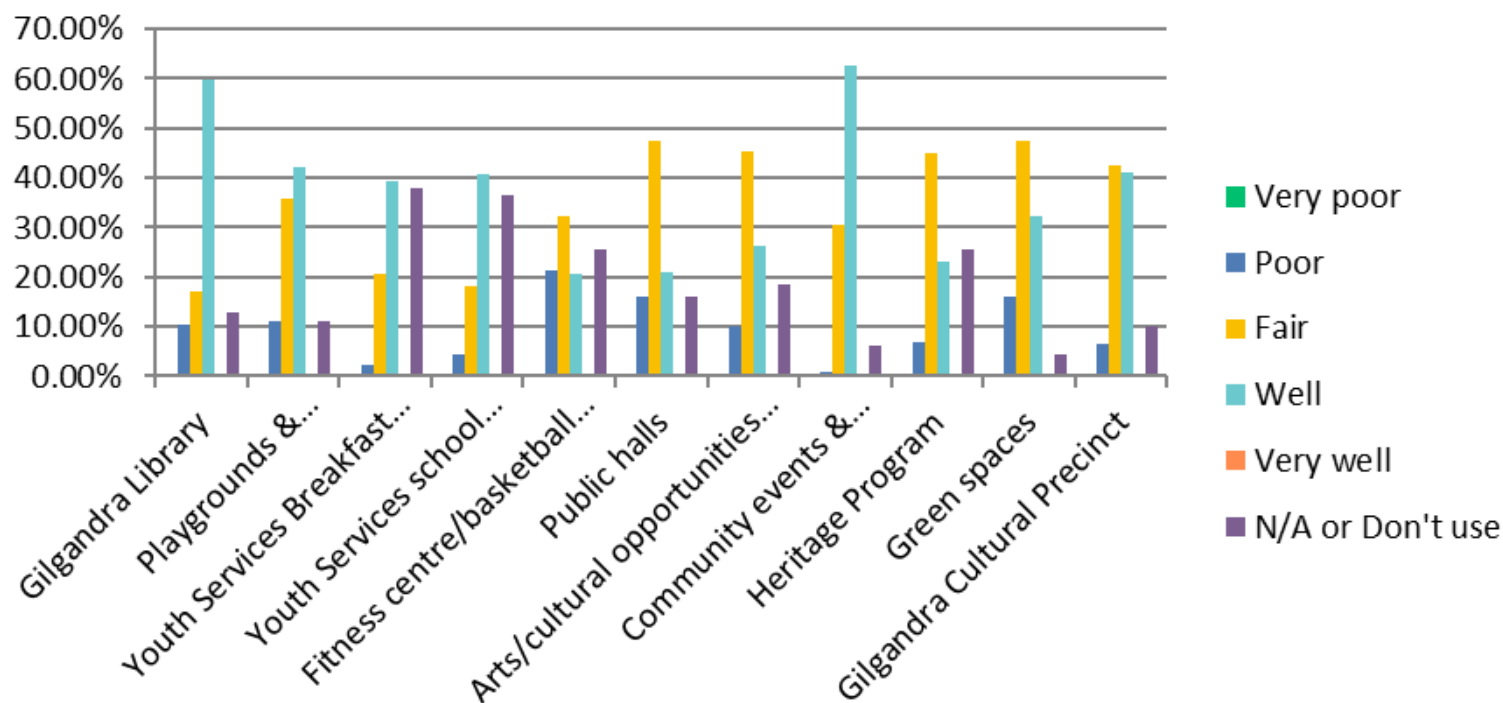
Playgrounds and sportsgrounds, Gilgandra Library, Fitness Centre/swimming pool, Green spaces, Youth services (breakfast club and after school drop-in), Community Events and Festivals, Public halls, and the Gilgandra Cultural Precinct were considered the most important facilities/services.



Enjoy...

No services were rated 'Very Well' or 'Very Poor' across any of the scores

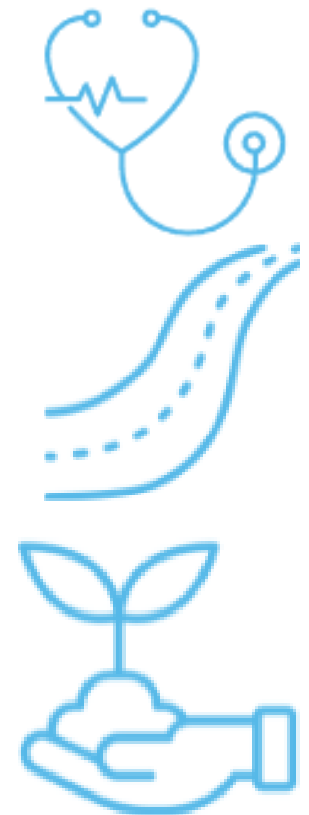
Performance - How well does Council deliver the service or facility?



Council Facilities & Services...

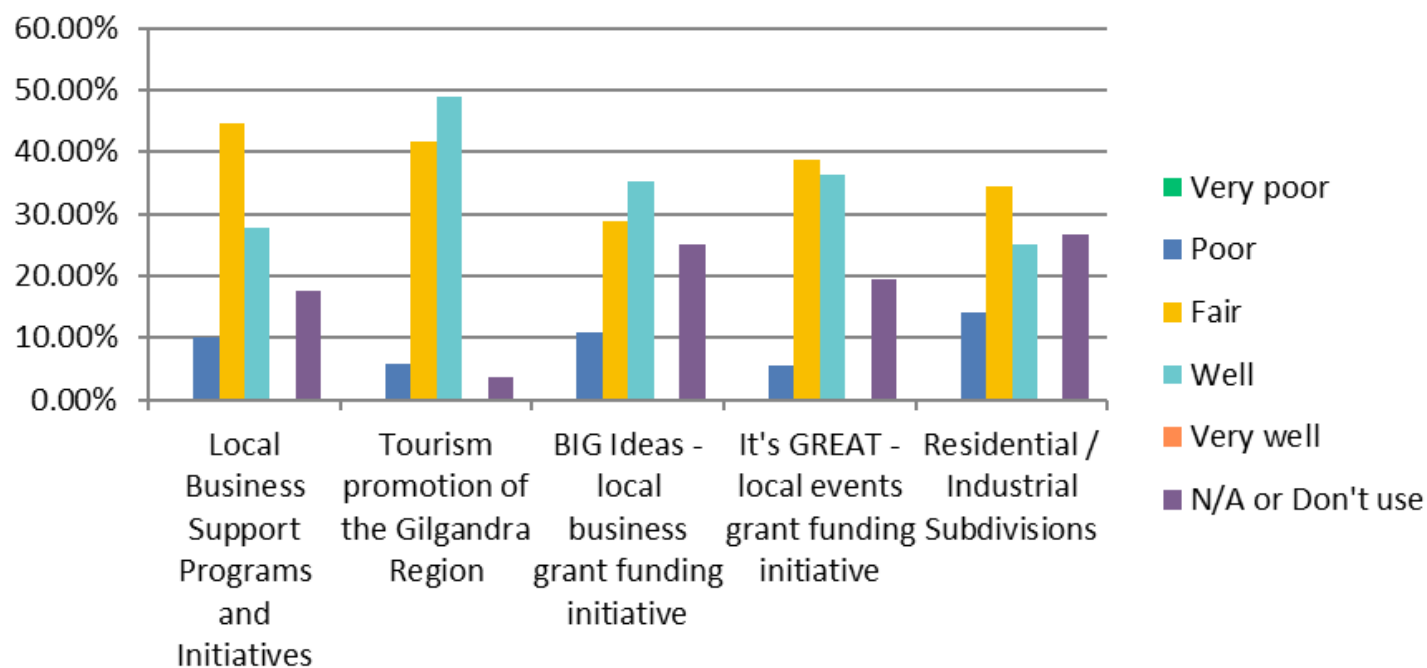
Most **important GROW** facilities and services:

Tourism promotion of the Gilgandra Region, Local Business Support Programs and Initiatives, Residential/Industrial Subdivisions were considered the most important.



Grow...

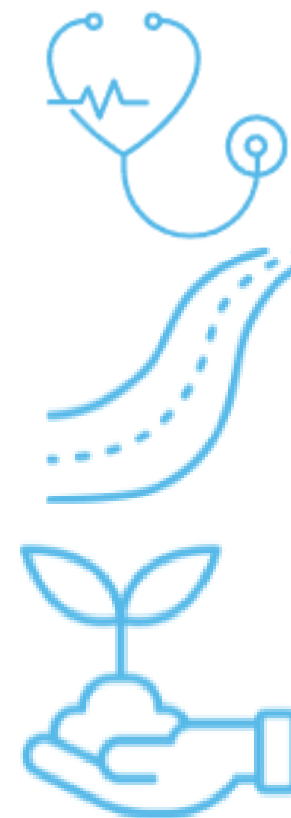
Performance - How well does Council deliver the service or facility?



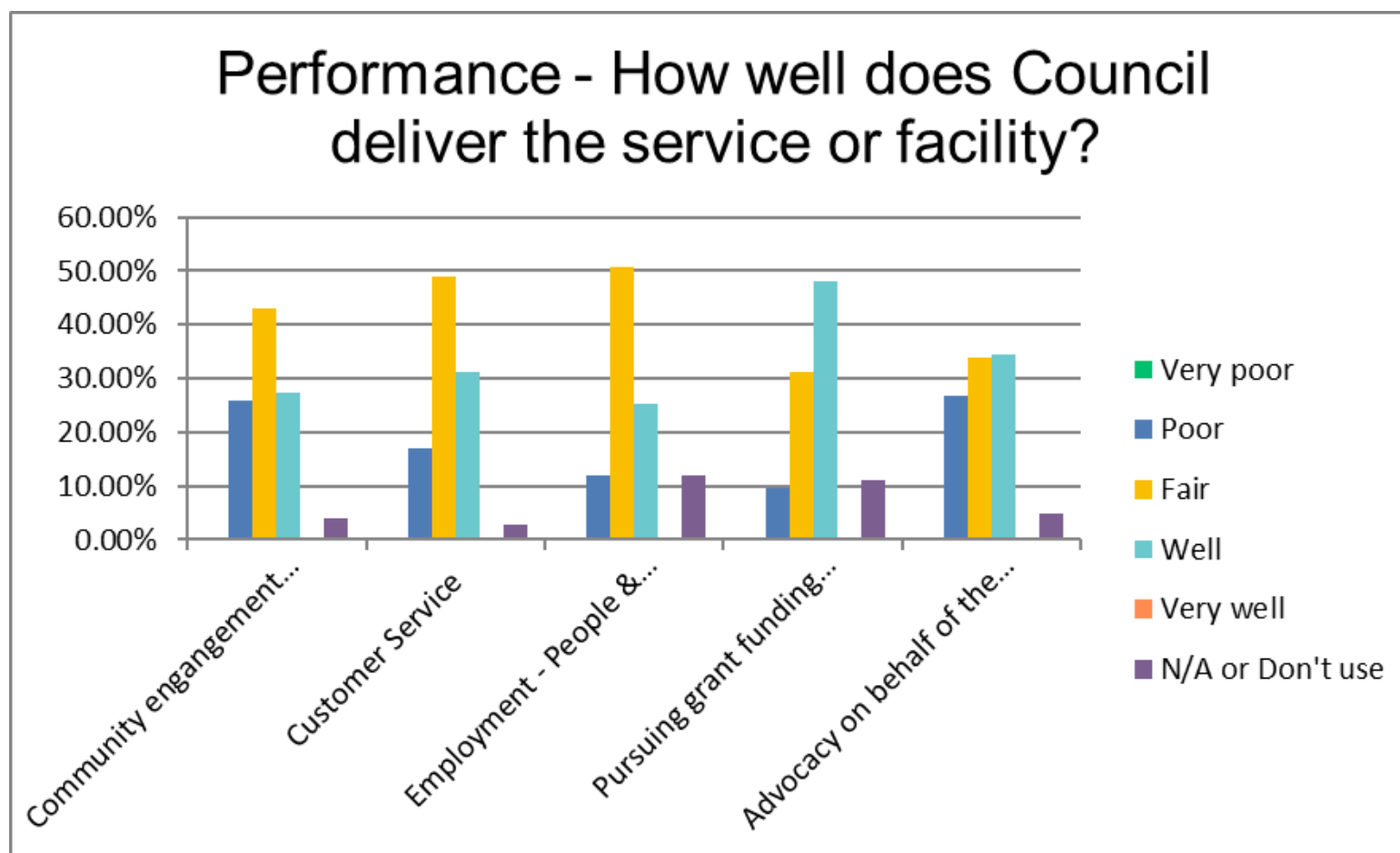
Council Facilities & Services...

Most important **LEAD** facilities and services:

Advocacy on behalf of the community,
Customer Service, and pursuing grant
funding opportunities were considered the most
important.



Lead...





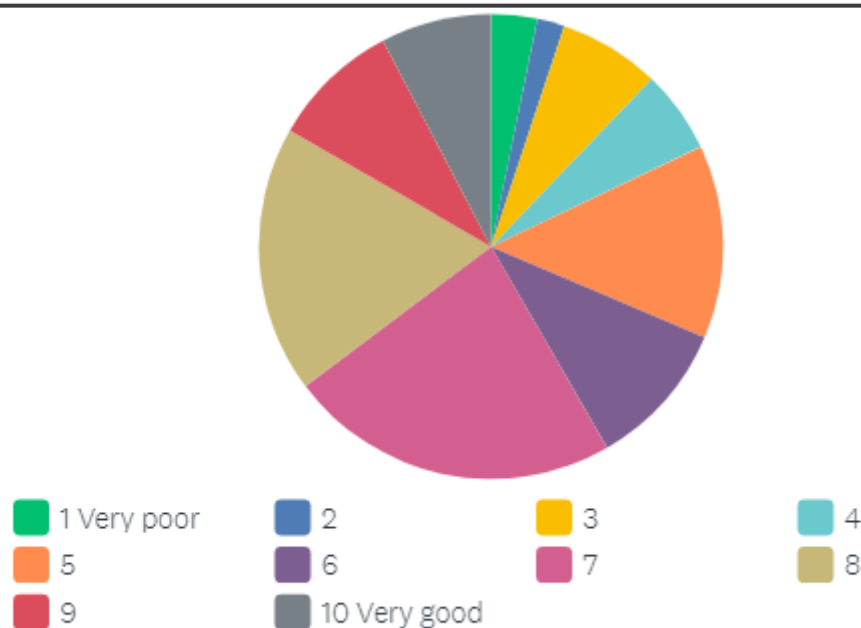
Most Important Facilities

2015	2021	2025
<ol style="list-style-type: none">1. Local Medical Centres/Dentists2. Sewerage services3. Public toilets4. Water supply services5. Public health (food inspections, water quality)6. RTA, Centrelink and other Government agencies7. Waste management and recycling8. Contributions to emergency services	<ol style="list-style-type: none">1. Local Medical Centres/Dentists2. Rural roads and bridges3. Town water supply4. Sewerage5. Public toilets6. Aged care facilities7. Disability services8. Waste collection and service	<ol style="list-style-type: none">1. Local Medical Centres/Dentists2. Waste Collection and recycling3. Public toilets4. Parks and gardens5. Sewerage services6. Aged care services7. Miller Street CBD8. Rural roads and bridges <p>+ Town streets, footpaths and walkways</p> <p>+ Advocacy on behalf of the community</p>

Local medical center's/dentists remains the most important facilities. However, there has been a shuffle below this with **waste collection and recycling and public toilets being rated as more important**. Rural roads and bridges have dropped lower in rated importance.

Council's Overall Performance...

The majority of respondents rated Council's overall performance in 2021-2024 term as a 7, on a scale of 1 (very poor) to 10 (very good). This was closely followed by 8.



82% scored Council's overall performance as 5 and above. Compared to 64% scoring 5 and above in 2021 for the term prior.

Top focuses for the future...

#1

Upgrading swimming pool
Swimming pool
community facilities
upgrade Youth
care make new
people water park
Employment Main Street
town
children sports
pool facilities
Better support
pool school library
open activities area
business services Street
different hunter park

#2

Community events
better spaces pool
council new
swimming pool
maintain parks gardens
Upgrade Swimming pool
main street
Housing
park
town
roads
areas facilities
services water
developments encourage

#3

Employment
community new youth walking
Improving facilities care
Street support main street
roads town parking
Better pool
services shade

Planning + Inter-
Generational Projects...

This Term... Live > Enjoy > Grow > Lead

- Arthur Butler Aviation Museum \$500k 25/26 - funding
- Sewer Treatment \$20M 25/26-26/27 - funding
- National Park Road \$900k 24/25 - funding
- Hunter Park Recreation Precinct \$16M 26/27 – 28-29 - funding
- RFDS Health Hub 24/25 – 25/26 \$1M (Health Vision) – external + funding
- CBD Planning and Development \$100k 25/26, \$5M 27/28 - funding
- Industrial Precinct 24/25 \$2.475M (Lummis) - funding
- Waste Facility – new cell 26/27 \$350k – reserves from Waste Charges
- Real Country implementation – funding \$3M 26/27
- ICT Roadmap - \$1.5M 24/25 \$1.8 25/26 \$1.6 26/27 \$400k 27/28 + ongoing
- Cooe Lodge Courtyard 28/29 \$1M
- Orana Living Admin Relocation \$1.1M 24/25
- Orana Living New Group Home \$1M over two years 26/27-27-28

Future Planning

- Water Treatment Plant (next term) \$30M 33/34 - funding
- GSC Administration Building \$2M 30/31
- Sealing Toora-Mendooran Road \$10M 30/31 – funding
- Village Management Implementation \$2M 30/31 (Recreational Precinct + pathway + toilet \$190k 29/30) - funding
- VMP Armatree \$100k 29/30 Memorial Precinct - funding
- Yarragrinn Creek Bridge \$1.2M 31/32 - funding
- Pending: Aged Care Accommodation Project (as opportunities arise) - funding

New Hunter Park Sports Recreational Precinct Concept

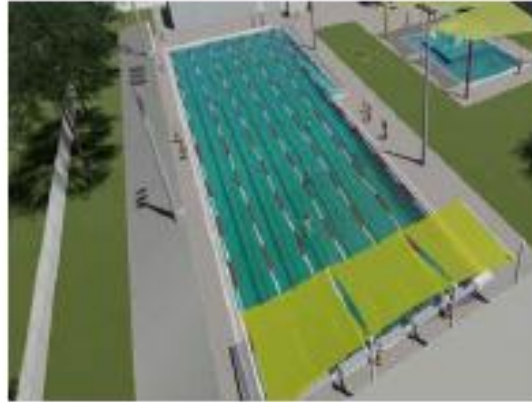
The Concept Plans for the New Hunter Park Sporting Precinct have now been finalised. The plans have been endorsed by the Gilgandra Shire Sports Council and include:

- 50m swimming pool, all abilities access, separate learn to swim and water splash pool
- Shaded viewing areas, generous grassed seating areas
- Amenities
- Multipurpose Club House
- Two full size multipurpose basketball courts and spectator area
- A modern indoor gymnasium and fitness spaces
- A youth centre including a "chill out" youth space
- Office and administration areas
- Provide a central access and egress point and shared kiosk and canteen area facilities
- Four new tennis courts
- Extensive On-site parking
- External lighting and CCTV

Vision

To create a Multipurpose Indoor Sports Centre which provides for a modern youth centre, gymnasium and outdoor public swimming pool which supports the growth and development of sports and recreation in Gilgandra.

Time	Resources	Collaboration
 MID 2025	\$ 12-15 million	



\$16 Million Project Pending Grant Funding

- Growing Regions Program 2024
\$11,200,000 – Federal Funding
\$4,800,000 – GSC Contribution

- Regional Precincts & Partnerships Program
\$14,000,000 – Federal Funding
\$2,000,000 – GSC Contribution
Working on Regional Economic Development due \$7M



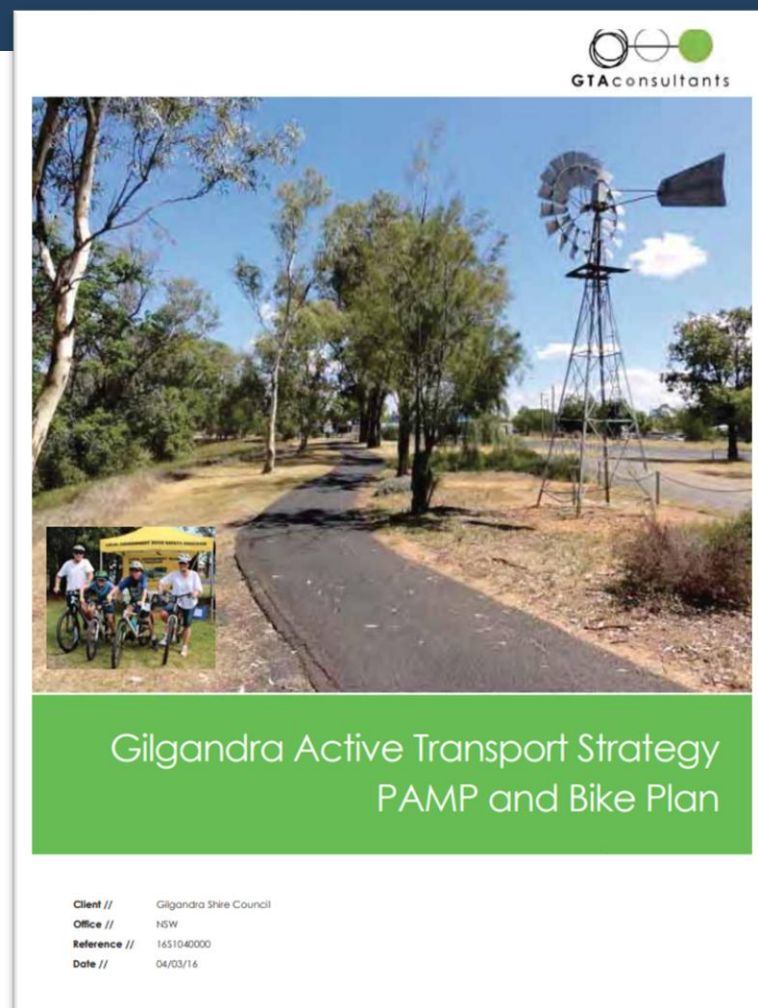
Active Transport Strategy

Planned delivery

- \$66,662 Get NSW Active Funding
- 2025 Delivery – adoption June
- Aged and disability clients, carers and families.
- Childcare providers and clients, schools, community facilities, health precincts, event spaces, local businesses, residents and visitors alike and stakeholder engagement will be included.

Major projects to be costed and planned for implementation and funding:

- Continued extension of the Windmill Walk to connect aged, disability, health, CBD, school, residential subdivision, GCP, CBD and Hunter Park Recreational Precinct including swimming pool, skate park, playground and green space.
- Further stages for pavement work between schools and the CBD.
- Considerations of connections between Hunter Park and the CBD, noting State and Local managed roads and intersections.
- Linking footpath/shared paths with new residential subdivision.





Gilgandra Local Environmental Plan 2011

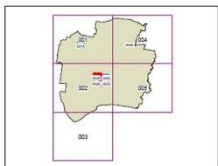
Land Zoning Map - Sheet LZN_002A

Land Zoning

B2	Local Centre
B6	Enterprise Corridor
E1	National Parks and Nature Reserves
E3	Environmental Management
IN1	General Industrial
R1	General Residential
R5	Large Lot Residential
RE1	Public Recreation
RE2	Private Recreation
RU1	Primary Production
RU3	Forestry
RU5	Village
SP2	Infrastructure
W1	Natural Waterways

Cadastre

Cadastre 27/09/2010 © NSW LPLMA



Scale: 1:25,000 @ A3
Project: LCN 194
Map Date: 19
Map Information Number:
2502_LCN_002A_002_20111111

Western Landuse Strategy Review

- 2009, regional document
- First step in broad review of Gilgandra LEP 2011
- Key focus will be on identifying and planning for growth opportunities for next 20 years




CBD Masterplan

- Stage 1 – caravan parking and dump point
- “Endless Possibilities” laneways project + seating + Shared Zone
- SCCF + Essential Energy pavement program
- Textured pavement to Real Country Windmill Walk Stage 2
- Carparking
- Speed Zone

OVER TO YOU

Aspiration, Ideas, Priorities, Questions...

- 
- What's your BIG Ideas? What's your top 3?
 - Question & answers to be developed into public FAQs document, updated following each meeting
 - Have Your Say

COMMUNITY STRATEGIC PLAN

Community Collaboration...

October

- Council workshops commence – overview
- Community Survey + priorities

March

- Confirm Vision, Values, Opportunities – elements on the CSP
- Budget and planning preparation continues

November

- Green Space Summit
- CSP Collaboration Survey Commences

April

- Budget and planning preparation - including Revenue Modelling, Rates and Charges

December -
January

- Survey open for residents

May

- DRAFT Budget + Plans endorsed to go onto public display.

February

- Council workshop – survey results
- Budget preparation commences
- Community sessions commence

June

- Council will adopt 2025/26 – 2034/35 Community Strategic Plan



GILGANDRA
SHIRE COUNCIL

Live > Enjoy > Grow



15 Warren Road, Gilgandra > PO Box 23, Gilgandra NSW 2827 P 02

6817 8800 > council@gilgandra.nsw.gov.au gilgandra.nsw.gov.au