

Toora Bungles



Volume 28 Issue 02
November 2021



Put a Steering Wheel On Your Work Dog! - Hints From The Dog House



With great prices being made for sheep and cattle at the moment the way we handle our stock has never been more important.

Keeping our animals calm and under the least amount of stress possible, is the name of the game, so being in the right spot and at the right distance off them when we are moving them around or handling them is so crucial to keeping them under control.

In the paddock we can manoeuvre from right to left and back again around our mob in a ute or quad, but if they are a bit flighty or our country is hard to get around our trusty work dogs can come into there own, as long as we can keep control of them and have them on the right side of the stock and in the right position.

If only we could steer them. Well actually we can if we develop sides on our work dog as they are being trained as young dogs. Having them being able to go left or right to a command is effectively like having a steering wheel on them and can be a real game changer if we are in a tight spot.

So, how do we train sides on our work dog? When we start training our young pups in a small yard with a few quite trainer sheep, one of the first things they're taught is to go around the sheep to the 12 o'clock position on the other side of the sheep to us. This is known as the point

of balance to us and is usually quite instinctive to the pup. Once the pup is balancing to us on the sheep we can start moving around the yard and the pup will hopefully keep going around to the balance point on the sheep behind us. So if we move to the left the dog should go to the right behind us to bring them to us, we can start putting a command to the dog as it is moving left or right to get to the balance point.

I use the commands "get around" for clockwise or right and "go back" for anti clockwise or left. As I'm moving to the right I'm telling the pup to "get around" and if left to "go back". If used consistently and repetitively the dog soon gets to know the commands and once learnt we can teach them to go left or right even as we are driving stock away from us.

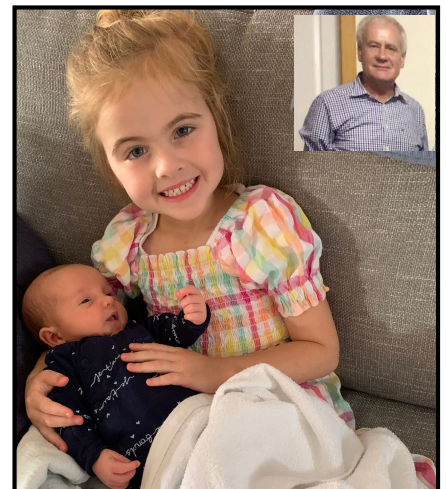
Having sides on our work dogs can be an excellent tool to have in the paddock or yard and is not that hard to teach.

Brendan Butler Oakfield Kelpies

Mockler Family — A Joyful Promise Kept!

Baby Harrison with Emma Mockler's daughter Bela. Harrison is the 6th Grandchild for Margaret and Brian and the 6th Great Grandchild for Cluna & the late John Gale. Grandpa (insert) yet to see his brand new grandchildren in person due to state border closures.

More pictures page 3 of Chris and baby Rose and Chris Emma and Harrison.



Full range of cricket stock has arrived for this season, juniors to adults
Canterbury school shorts now in stock for the warmer months
Drink bottles and backpacks
NRL Supporters chairs

Phone 0419 167 671

42 Miller Street, Gilgandra

Locally owned and operated

Open Tue - Fri 9-5; Saturday 9-12

Gift Vouchers & Afterpay

Instagram-victorylapsports_gil

TOORAWEEAH TRADING CO

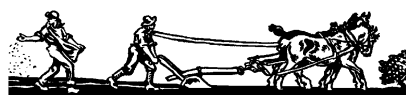
Your CRT Store in Tooraweenah
Post Office and Newency

Contact Lester

for all your agricultural needs

Phone: 6848 1011 or 6848 1127

Fax: 6848 1197



Christie & Hood

**Auctioneers
Stock and Station Agents
Real Estate**

For all your livestock and property requirements contact our:

Gilgandra Office: 6847 2033

Dubbo Office: 6884 3800



After Hours

Paul 6847 2741

0429 472 741

Tim 6889 6109

0429 843 804

Colin 6884 3802

0429 843 802

Read the Toora Bungles at: <http://www.gilgandra.nsw.gov.au/Live/Your-Community>

Mental Health, Drought & COVID 19 Please, Reach Out For Support

NSW Government Drought Hub
www.droughthub.nsw.gov.au
For Mental Health Information and support; Centre for Rural & Remote Mental Health and RAMHP— Check out their web site
W: www.ramph.com.au to find the local RAMHP Coordinator
E: ramhp@newcastle.edu.au
Visit www.crrmh.com.au click on the link to the Drought Support Home Page

The Salvation Army
 24 hour hotline: 1300 551 030
 Website: salvos.org.au/drought
St Vincent de Paul
 Hotline: 13 18 12 Website: vinnies.org.au
Rural Financial Counselling Service NSW Central Region
 FREE Call: 1800 940 404
 Email: ceo@rfcscr.com.au
 Website: www.rfcscr.com.au

COVID 19 Help & Support

Federal Government: www.australia.gov.au
 Coronavirus Help Line; **FREE**
Call 1800 020 080 or *If you have symptoms*
Call Health Direct **FREE**
Call 1800 022 222 **NSW**
 State Government: [https://](https://preview.nsw.gov.au/covid-19)
preview.nsw.gov.au/covid-19 **Help Line for**
Businesses Impacted **Tel: 13 28 46**



Tooraweenah CWA - Cath Waller Reports



A big Hi to all,
The Photo above features the School students enjoying exploring their Malaysian goodie Bags provided by CWA NSW State International Officer Sue Armstrong during her visit to the school. It was great to see so many attend our

General and AGM meetings on Wednesday 13th October. Congratulations to Beverley our President on her re-election for the coming year, Jill our Secretary and myself Treasurer. A big welcome to Patricia Kirk, who has become our newest member. Also a big thank you to Judy Reeves who chaired our AGM. After our meeting we went to the Mountain View for a lovely lunch. Our next meeting on Wednesday 10th November will include our International Day Luncheon to be held at the Royal from 11.30am. Cost is \$25. Please RSVP to Beverley 6848 1190 or Leanne 6848 1106.

Our Monthly meeting will start with coffee at 9.30am followed by our general meeting at 10.00am. Six (6) of our members will attend the Macquarie Group Conference in Wongarbron on Monday 8th November, Till next time.
Cath Waller Publicity Officer

STOP PRESS:

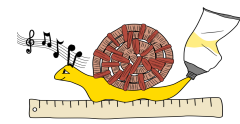
Tooraweenah CWA Branch has been successful in being granted funding under the **Australian Federal Governments Powering Communities Program** to install a new Solar PV system 5kw 18, 370W Panels to Tooraweenah CWA Rooms. More on this project in the December 2021 issue of the Bungles! Ed.

What's News From The Mountain View.

Lots happening, Melbourne Cup Tuesday 2nd November, is an opportunity for some socialisation. Pop along for a delicious meal, Champas and try your

luck with a horse in one of the sweeps. We have harvest meals available. Lunch packs \$15 Frozen home cooked meals \$10. Harvest meals are available from the 1st of November, all day. Just phone ahead if possible 6848 1017. Otherwise, just call in. You can also browse the ad on the left for choices or checkout our face book page for menu options and updates!

Reminder, don't forget to book your Christmas parties!! We have our amazing beer garden out back ready for some Christmas action! And please, save the date for our Christmas party on Saturday the 11th December. Hope to see you at the Mountain View!



Harvest meals
Phone ahead 68481017

Lunch packs \$15
Ham, chicken or corn beef on a salad roll or in a container, a muffin & a can of drink

Homemade frozen dinners \$10
 Curry chicken
 Butter chicken
 Lasagne
 Beef casserole

Served with rice or other sides mash, veg or salad available upon request

Cold meat & salad plate \$15!
\$5 schooners
\$5 champas

Melbourne Cup
\$1, \$2 & \$5 sweeps

MOUNTAIN VIEW CHRISTMAS PARTY
SAT 11TH DEC
BISTRO 6-8:30

ENTERTAINMENT **HAM RAFFLES**
STU DOUGAN **FACE PAINTING**
SANTA ARRIVES AT 6:30PM **GINGERBREAD DECORATING**

Around The Traps ☺

More On The Tom Quilty Over The Coming Months. 🍷

Tooraweenah LPO

Postage stamps are available for your Christmas cards and they are 65cents each again this year.

All customers are reminded to post their Christmas mail and parcels early to get to their destination on time.

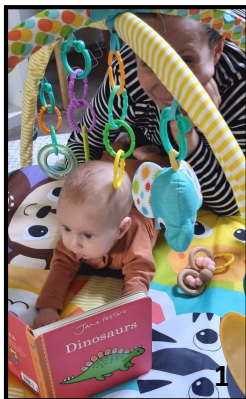
The rainfall for Tooraweenah (until 22/10) October 2021 was 29.4mm over 3days with a YTD total of 611.2mm over 49 days.

Lions Clothing Bin

Residents that take advantage of the Lions Clothing bin are reminded that it is for clean clothing only.

Mockler Families Joy!

1. Rose Alexandra Mockler, born 3 July 2021 in Melbourne.



2. Proud Dad Chris Mockler with baby Rose. 3. Chris & Kate Clarke overjoyed with the safe arrival of Harrison Michael



Clarke, born on the 23rd of September at the Gold Coast. A brother for Georgia.



From The Tooraweenah Show Ring - With Sue Armstrong

Cancellation of the Annual Show – due to be held in October - was another casualty of COVID 19. However, our committee continues to work behind the scenes to enhance the showground and facilities and to make next year’s show super fantastic.

General upgrades include electrical work, extra piping of water about the grounds - in particular to the horse arena - with more horse troughs to be installed.

Maintenance includes mowing, keeping yards in order and regular maintenance of buildings.

The next project is to move and refurbish the Shed adjacent to the rodeo and roping yards to near the Yard Dog area. We will be trialling the use of a BBQ inside the kitchen for catering purposes. If

successful, it may be worthwhile considering a BBQ as a permanent addition.

Grant News

1. We have applied for a grant to purchase a good size ride-on mower. Whilst we currently have generous volunteers using their own mowers, we cannot expect them to do so long term.
2. We have already received a grant for the First Aid Room and Office which has enabled us to plan a wonderful new building. Keep your eyes peeled for the first stages of construction.

A Field Day is planned under the able stewardship of Brendan Butler. We just need COVID 19 to behave itself to enable Brendan to set a date. **There will be Working Dog Trials in 2022** - but again,

subject to COVID 19 regulations. Tooraweenah Show Committee are an amazing, dedicated and hard-working group of men and women. They are committed to promoting, improving and enhancing the Show for not only our generation, but for those to come. Just because the Show is over 100 years old doesn’t mean it is past it’s prime. In fact, it continues to grow and to blossom.
Would you like to join our committee? Like all in our community you are welcome to come to our meetings, offer suggestions and put up your hand to help. We each volunteer in large and small ways and your input will be great. For more information please ring Kristy Gale (Show Secretary) on 0429780323 Or email: toorashow@gmail.com

TOORA MOTORS

MVRL—57677
ABN—95714460638
7 Denman St
Tooraweenah NSW 2817

- * All mechanical Repairs & Servicing
- * Rego Inspections on Light & Heavy Vehicle
- * Brown slip inspections on Heavy Vehicles
- * Tyre repairs & fittings
- * Battery supplies
- * Bags of Ice
- * Limited on site repairs

Call Stephen Watt Tel: 6848 1182
Mobile: 0466 472 897
Email: stephenwatt33@gmail.com

Inland Petroleum

Bulk Fuel
Lubricants

Servo's across NSW

Call- 1800 638 700

'More than just fuel'

EMU LOGIC

Emu oil for sore joints and skin problems, for you and your dog

Products available from
Gilgandra Coo-ee Heritage Centre
Coona Rural and On-Farm

Visit us at:
www.emulogic.com.au
or on Facebook: [emulogic](https://www.facebook.com/emulogic)

Gilgandra Region Reports

HAVE YOUR SAY about GSC | SURVEY EXTENDED!

You're invited to Have Your Say about the facilities and services provided by GSC on your behalf!

The quick survey will assist Council in planning our community's future over the next 10 years with the 2032 Community Strategic Plan, ensuring the Gilgandra Region is a great place to Live > Enjoy > Grow!

Complete the survey now... <https://www.surveymonkey.com/r/Q9W8Q9Q> or find out more at Council's website. Survey has been EXTENDED and now closes 3 November 2021 - don't miss your chance!

Copies of the paper-based survey are also available at Gilgandra Shire Library, The GIL Collective, Service NSW, 15 Warren Road Administration Offices, Cooee Lodge and Jack Towney Hostel or by calling 6817 8800.

HUNTER PARK SPORTS & RECREATION PRECINCT

"This is an exciting unveiling as we plan for a community project for the future of

our region. These plans are the first step for Council and have included identifying the needs of user groups, making the space workable within Hunter Park and planning for future opportunities in the Precinct" says Mayor Batten.

The concept plans for the Precinct have been endorsed by the Gilgandra Sports Council and includes:

- 50m swimming pool, all abilities access, separate learn to swim and water splash pool
- Shaded viewing areas, generous grassed seating areas
- Amenities
- Multipurpose Club House
- Two full size multipurpose basketball courts and spectator area
- A modern indoor gymnasium and fitness spaces
- A youth centre including a "chill out" youth space
- Office and administration areas
- Provide a central access and egress point and shared kiosk and canteen area facilities

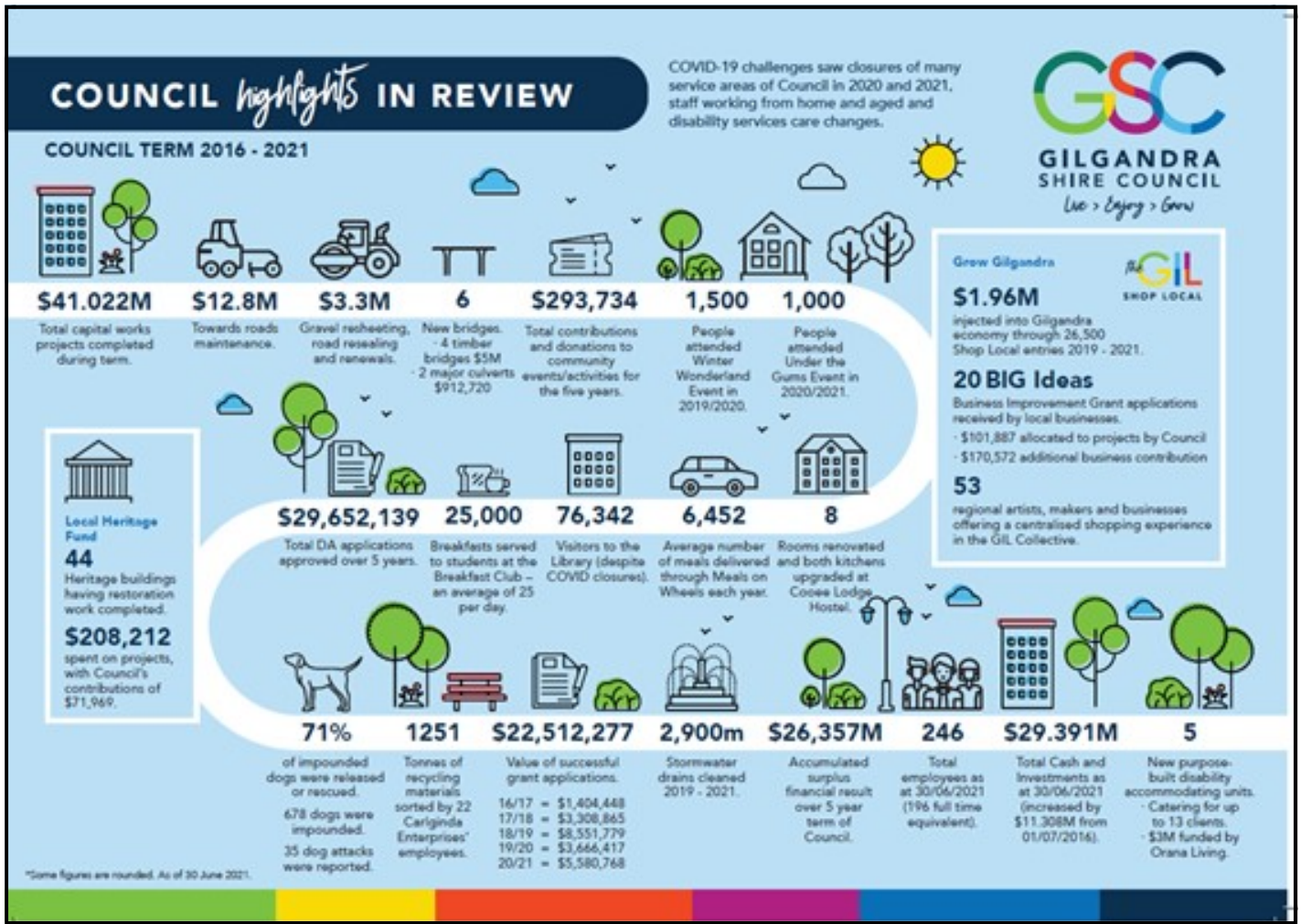
- Four new tennis courts
 - Extensive On-site parking
- External lighting and CCTV

VOLUNTEER WITH US!

Call out for interested volunteers across GSC services including Community Care, Meals on Wheels, Youth Services, Visitor Information and more! Visit Council's website or call 6817 8800.

STOP PRESS

Mark Coulton, Federal member for Parkes announced on Friday that under the **Federal Governments; Building Better Regions Fund (BBRF) Gilgandra Shire Council has been awarded \$329,514 for its "The Mill on Miller Street" project**, which will revitalise the town centre and capitalise on the under-utilised laneways to link up with the Castlereagh River. Ed.



Tooraweenah Golf Club Rounds



Rod Job, Bret French Steve Masling all smiles!

It was with a feeling of relief that players were once again 'cleared' to play golf. **On Saturday 2nd October it was a misty, drizzly day although the weather soon improved, however, not long after that a driver was dispatched to bring warmer jackets as the weather once again turned and the misty rain came back and, a short time later turned into an absolute downpour! One team threw in the towel – literally – and returned to the clubhouse wet to the skin. The hardier continued, grabbing shelter where they could for the 10 minutes of heavy rain that turned paths into streams and dust into mud! A smaller field finished than started!**



President's Day 2021 on the 16th drew a good field of players from near and far. **Pictured: Cooper McGlashan and President Bret French.** The weather was with us this week with a light breeze to keep

the heat and humidity at bay. On the 16th the rules of the game were 2 players, only 3 clubs each! Amid guffaws of disbelief the players sorted out their

clubs and teed off somewhat lighter than usual. The weather was kind, although when the sun hid and the breeze blew the chill was felt. We have managed to entice, not only 'blasts from the past', but also some players from Baradine to beat a path to Tooraweenah because the course is looking magnificent at the moment after some wonderful rain falls and course maintenance by Al Wykes, Geoff Hill & Brett French. Summer arrived on the 23rd, despite the forecast of 90% chance of 5-10mm of rain, the weather held and it was a hot, humid, if a little windy, day. We had a reasonable number of starters, with guest appearances by Graham ('GG') & Tim who are staying at the caravan park for a bit of rest and relaxation.

The 'ambrose twist' this time was that each player could only have 2 clubs – making a grand total of 4 clubs per pair. There was a fair amount of sledging when the groups arrived back at the bar after the 18 holes, with the 'twist' causing much hilarity throughout the day.

Thanks to everyone who came and made the game fun – we'll be back again next week (30th) with yet another twist to the 2 person ambrose contest. Come if you are able before harvest starts and golf gets put on the backburner again for a while. Noms \$10. 9.30 for a 10am tee off. Food available. Bar opens at 10. EFTPOS facilities.

Winners over the month were Evan Ryan and Brank Hammond (Gular), Geoff Hill & Matt Job (Toora), Dwayne Hammond and Jason Carter (Gular), Cooper McGlashan (Baradine), Ashley & Andrew Starr (Toora), Nicole, Dan & Thea Harte (Toora), Trent McGlashan (Baradine), Rod

Job, Steve Masling & Pat Foran (Toora), Steve Watt (Toora), 'GG' (Port Macquarie) and Tim Sanders (Ariah Park).

Thank you to everyone who has come back to support the club after the seemingly interminable lock down.

Please note we have changed our tee off time so that games are completed before the hottest part of the day. Noms are at 9.30 for a 10am tee-off.

Physical distancing and indoor limits will apply, as per current COVID health rules. **November Golf – As admin will be away for November please keep an eye on the notices at the Mountain View Hotel, CRT and Toora Motors for updates on the program for this month.**



Bushranger Matt, Looking relaxed!

TOORAWEEENAH GOLF CLUB INC

PRESENTATION DAY 2021

SATURDAY 11TH DECEMBER

9 HOLE 2 PERSON AMBROSE-WIN A HAM!

MEMBERS PLAY FOR FREE

9.30 FOR 10AM TEE OFF

FOLLOWED BY LUNCH & PRESENTATIONS

BDOG

NO BAR

- GENERAL AREA RULES**
- EVERYONE TO SIGN IN, PREFERABLY USING OUR QR CODE (PAPER FORM AVAILABLE)
 - PLEASE WEAR A MASK WHEN IN THE PAVILION CLUB HOUSE
 - MAXIMUM 22 PEOPLE IN THE PAVILION CLUB HOUSE

OAKFIELD KELPIE STUD

Offering affordable black & tan working kelpie pups for sale.

Strong, Calm & Smart

Karana & AKennedy's bloodlines
The best genetics available

Contact
Brendan Butler 0447481048



Needing a Remedial, Sports, Pregnancy or Relaxation Massage?

Nicole is Diploma Qualified and Health Fund Accredited Located in Tooraweenah

For appointments call or text Nicole Harte 0457 954 346



THE LITTLE GECKO COFFEE SHOP

16 Aimee Street Tooraweenah

Tel: 6848 1089

- Coffee, Frappe, Cold Drinks**
- Toasted Sandwiches, Turkish Breads & Wraps**
- Small selection of groceries**
- A Range of Giftware**
- Opening Times**
- Wednesday to Saturday 8.30am - 12.30pm**
- Car Trailer for Hire**

Tooraweenah Public School With Principal Karen Smith

Term 4

We are back learning face-to-face! It was wonderful to see our students bubbling with enthusiasm to be back at school learning with their friends. Thanks again to the parents and carers who so ably supported their children during 'Learning From Home'. We are very pleased to be back on site and be once again, face-to-face learning.

PBL Celebration



Our long awaited PBL Celebration was held on a Friday. Students enjoyed being allowed to bring their scooters, bikes or roller skates for use during recess and lunch as well as completing their first Breakout Challenge.

Students solved several clues to find the number, shape or colour pattern to break into the locked box. Inside were ingredients for students to make slime! **Bonnie is pictured above enjoying every minute!** A great day was had by all!

Veggie Garden revamp



Wes and Carl from WNPEEC (Warrumbungle National Park Environmental Education Centre) spent two afternoons revitalising our wicking beds with

students. The team worked together to top up soil in 5 of our beds, worked to solve a blockage in the reservoir in one bed, and finished by planting out some new vegetables in all beds. We are very

thankful for the expertise and hands on learning experiences we can offer our students, supported by the WNPEEC staff.

Inter-school Public Speaking and CWA Competitions

Students have submitted their poetry recitals for judging for the Inter-school Public Speaking Competition. We look forward to hearing the results in the coming weeks. Students in Years 3-6 have submitted their Powerpoint Presentations to the Tooraweenah CWA. Students learned a great deal about the country of study for 2021 – Malaysia and greatly enjoyed getting to sample some very interesting Malaysian foods provided by Sue Armstrong, who is the State Representative for NSW CWA. Our students were grateful to take home their own Malaysian 'goodie bag' from the CWA. *See photo CWA News page 2*

Transition to School



Maddison & Eloise enjoying Transition.

Our final Transition to School day will be held on Monday 1st November. We have greatly enjoyed getting to know our two transition students and help them to gain experiences in our classroom routines. Although some of the weeks at the end of last term were 'learning from home' activities provided for them, we were very pleased to be able to offer a total of

8 full days transitioning to Kindergarten. There will be an email sent to Transition parents inviting them to a Parent Information Session in line with current COVID guidelines. The Parent Information Session is scheduled for the afternoon of 5th November 2021.

Technology Lessons- 3D Designing and printing



On Fridays, students have been designing and making in 3D using the software Tinkercad and printing them on the Stem T4L Kit, 3D Printers. Students have

been meeting the design brief by creating measured sizes of objects that are fit for purpose. The Kindergarten students have been designing a name tag and a chair for baby bear from 'The Three Bears.' Year 2 have been designing a vehicle that fits a Lego person and has moving wheels, while Year 3-6 class have been designing a piece of wearable jewellery. The results have been quite amazing, with students really stretching their skills in design by prototyping and improving their designs.

When printing, some designs take as little as 2 mins, while others take more than 4 hours. We are very grateful to Petria, who has spent many hours printing the 3D designs for our students.

Inter-school Public Speaking

The winners and runners up of the Inter-school Public Speaking Competition will be announced next week. The video links emailed to parents will be valid until next Tuesday, after which the videos will be removed from the online platform.

*Karen Smith
Principal*



*Photo:
Hamish riding his bike*

Ovarian Cancer Australia

Our vision is to save lives and ensure that no woman with ovarian cancer walks alone.

Help Line: 1300 660 3345

Web: ovariancancer.net.au

Mountainside Beauty & Massage

Tooraweenah NSW
 Massage, Facials, Skincare,
 Tinting, Waxing, Mani/Pedi,
 Gift Vouchers, Mobile Services

0439 470 549

mountainsidebeauty@hotmail.com

**Appointments Via Phone
Or Facebook**

Tooraweenah Preschool 'Developing Wings of Independence' - With Miss Marie

It has been so nice to see our preschool friends again and chat to them face to face this term!

We thank our families for staying connected with us during lockdown via our online 'Educa' program, sending through photos and videos of their home activities. Everyone has been super excited about being back and playing together; chatting about what they've been doing at home and sharing lots of news including birthdays and special events. Our Preschool Photos are being taken Week 5, on Wednesday 3rd November at 9.30am. Remember your smiles friends?

The 2022 Enrolment Packages will be available from 2nd November and are due back by 30th November. More packages will be left with Lester and Helen at Tooraweenah LPO (with our sincere thanks) for other families in our community to collect, and return via the PO.

We are unable to have visitors on site (at this point in time) due to Department of Education COVID restrictions. (If we are at all able to hold a "Visit to Preschool / Transition Morning" one Tuesday we will do so.) Please feel free to call me at preschool on 6848 1060 Tuesday to Friday 8am – 4pm if you have any queries/questions about Preschool and 2022 enrolments.

Preschool staff have recently completed several Professional Development training sessions, including one on "Loose Parts" (activities and programming) and Mental Health and Wellbeing in Young Children. Knowledge from these sessions has been put into practice.

With the COVID lockdown, our 'Bush Preschool' sessions ended with the lockdown,



so over the next few weeks all our children / groups will enjoy a fun morning with a "Play in the Park". It is always great to access and use our local park and facilities, and this will also assist our children to familiarise themselves with this location, especially as this is where our **End of Year Concert will be held on the evening of Friday 3rd December. (Save the date!)**

The children have been busy scientists with



Miss Shannon, with a sandpit full of volcanos and lots of colourful eruptions . It was fascinating to see and super exciting as well – especially when friends decided to mix their volcano mixture colours together and make a new volcanic eruption colour! Our "production" of the story "This Is The Mud" for Grandparents Day in August was cancelled, so we will soon video this performance and share it with our families online. The children put in a lot of work and created the props for this show which is sure to be a huge hit with everyone: live (and free) online via Educa! We are very lucky and quite grateful that we can still share this 'concert' with our families.

Preschool friends have been busy doing many different art/craft experiences, showing their **amazing creativity** as well as their artistic flair in the process. There has been lots of detailed planning, engineering and teamwork when building cubby houses together inside, using various pieces of furniture, sheets and curtains. This required some negotiation and collaboration between friends, so they



could then play in their 'homes' enjoying puzzles, constructions, books, and other activities. Investigations have been undertaken and discoveries have been made together, which has been very exciting and spurred on the children's curiosity and interests.

We have started a learning enquiry around vets and animals, so our dramatic play has included the doctor/vet set which has been popular, along with some "injured animals" (aka soft toys) needing treatment. We have some very thoughtful and caring upcoming vets and medical staff in our midst, with some amazing role-playing, including some fascinating (and at times quite imaginative) stories about how the animals were hurt and what they were doing when the accident happened! More fun and dramatic play has also been happening outside, with games and stories using the dolls and prams, the bikes and as you can see



Ally & Sam playing in the sandpit with the new aqua-play channel set with boats and ships to go with it. This of course has led to water play with more constructions using the pipes to build irrigation systems and pipelines, ensuring no leaks and that it works well, filling the container at the end with boats in it so they can float. Preschool is so much fun!

Miss Marie.
Marie Jacobsen Nominated Supervisor



Tooraweenah Community Bus offers a door-to-door pick up from 9am to Gilgandra for essential transport, with restrictions returning earlier to Tooraweenah.

Schedule for 2021:
Please ring to check.
THANK YOU.
Usually the second and fourth Tuesdays of the month
Please ring to book: 6817 8750



Luke Harvey
Owner/Certified Welder
Mobile Welding and Repairs
On-Site Service, No Job Too Small
Ph 0407 321 672
lmhwelding87@gmail.com
Our services include:
MIG TIG STICK, Air Arc Gouging
General Fabrication, Farm Equipment,
Earth Moving Equipment,
Trailers, Repairs
Call For A Quote Today




Opening Hours from 12pm 7 days a week

Bistro hours
Sunday
Lunch 12-2 Dinner 6.00-8pm
Thursday, Friday Saturday
Lunch 12 -2pm Dinner 6-8.30pm
Monday night Pizza or frozen Harvest
Dinner meals only—Full menu other days

Follow our Facebook page to see activities and Specials
Don't forget, we have all your essential items plus take away food, drinks and merchandise!

Community Bank - Gilgandra

Making good things happen



Bendigo Bank Search Bendigo Bank Gilgandra

**57 Miller Street, Gilgandra
6847 1502**

Items repaired or replaced using
BASIC MACHINING & WELDING



Simon Blackman

**Mobile: 0428 064 555
Home: 6848 1149**

MENTAL WELLBEING

Depression

It's not a matter of just being tougher or more resilient ... you're in strife and you can be helped

www.beyondblue.org.au or
Phone: 1300 224 636

youthbeyondblue.com
1300 22 4636

**Anxiety Disorder Information:
1300 794 992**

**Mental Health Information
1300 794 991**

Mental Health Line
1800 011 511—24 Hour access

Lifeline: 13 11 14
Men's Line Australia
1300 789 978
Kids Help Line
1800 55 1800
Domestic Violence
1800 656 463
Alcohol & Drug Info Service
1800 422 599
Suicide Call Back Service
1300 659 467



Checkout this website!
www.yougotthismate.com.au

It provides tips and info to help rural men reach their best possible mental health and info you need to help you be the best possible support for a loved one who is experiencing tough times!

Veterinarian
Nadine Allan BVSc Hons

Will visit Tooraweenah second Tuesday each month

Phone 6847 1129
for appointment

Gilgandra Veterinary Clinic
2 Enterprise Drive
GILGANDRA NSW 2827

Mobile: 0427 471 129

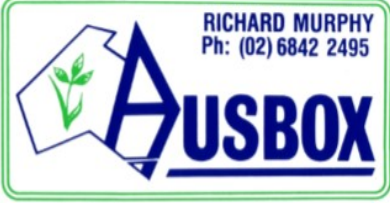


FOR HIRE


Cool Room

Contact
Geoff or Bev Pike

6848 1190



RICHARD MURPHY
Ph: (02) 6842 2495



ROBERT WALLER
'Bob's Plant Hire'

Phone
6848 3514
Mobile
0423 281 691

Need contour banks, roads or small dams?

Contact Robert

GAVIN DUFF
CONTRACTOR

For all your building and carpentry needs
Home maintenance and improvements
No job too small

For an obligation free quote please call

**AH: 6848 5345 or
0429 317 921**



CTC@Tooraweenah

We are CLOSED to the public until further notice
Ph. 6848 1154

Tooraweenah Caravan Park



- Relaxed Friendly Atmosphere
- Pet Friendly
- Powered & Unpowered Sites
- Ensuite Cabins
- Pool

Resident Owners
Scott & Janelle Quilter
6848 1133

www.tooraweenahcaravanpark.com