



GILGANDRA
REGION

CHC...



GILGANDRA CULTURAL PRECINCT

Outcomes & priorities

This plan focusses on 3 key themes within Gilgandra:

- Military heritage, including Cooee March
- Landscape, including the natural environment and farming
- Aboriginal heritage

The main outcomes and priorities focus on:

- Generating local community ownership and pride
- Being a visitor destination
- Support and encouragement for local and regional cultural and artistic expression
- Understanding, knowledge and respect for local history, heritage and environment
- The economic benefit to Gilgandra Shire





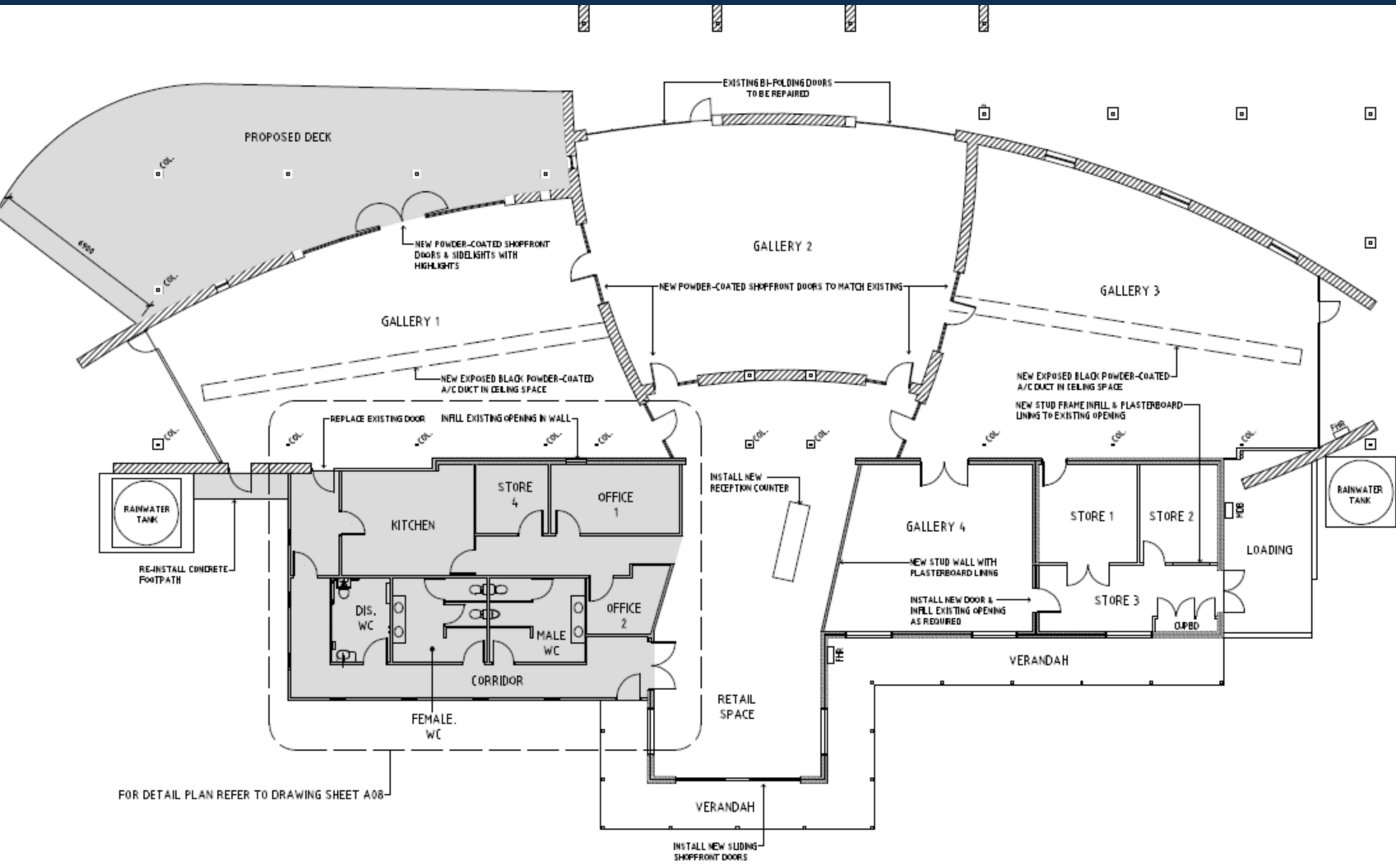
The project.

Construction:


- Painting, flooring & new entrance
- Decking area for view of Castlereagh
- Air-conditioning for galleries
- Climate controlled storage & cabinets
- New internal doors
- All-abilities access entrance
- Upgrades to amenities, office and kitchen
- Solar farm
- Carpark

Experience:

- Coo-ee virtual reality/hologram
- Coo-ee calling experience
- Working windmill
- Bush tucker garden and Aboriginal sculpture
- Signage linking GCP – Rural Museum & CBD
- Aboriginal murals
- Windmill upgrades on Windmill Walk



FOR DETAIL PLAN REFER TO DRAWING SHEET A08



Maintenance & renewal of 8 windmills

Operational windmill & irrigation system

Observation deck

Upgrade of path
Signage

Solar farm

External landscaping [LINK](#)

A tall, slender metal windmill tower stands against a deep blue night sky filled with stars. The tower's top is a circular structure with many small, rectangular blades. A small sign is attached to the tower, reading "SOUTHERN CROSS AUSTRALIA 8". In the foreground, the tops of several trees with yellow and green leaves are visible. The bottom of the image features a horizontal bar with several colored segments: green, light green, yellow, orange, purple, dark blue, and light blue.

Where to now...

- Stakeholders information sessions & information distribution
- Tender documentation preparation
- VIC into the GIL
- Construction timeline
 - September – February 2021



GILGANDRA
SHIRE COUNCIL

Live > Enjoy > Grow



GILGANDRA
REGION



gilgandra.nsw.gov.au

15 Warren Road, Gilgandra > PO Box 23, Gilgandra NSW 2827

P 02 6817 8800 > council@gilgandra.nsw.gov.au

gilgandra.nsw.gov.au