



Show Garden Competition Winners!



The Tooraweenah Show Garden Competition proudly sponsored by the Tooraweenah Caravan Park was hotly contested.

Emma Hutchison, pictured, is receiving congratulations on winning the Best Garden Award. Congratulations to Mick Walton for the Most Colourful Garden and to Denis and Marcia White for the Best Feature Garden.

A special thanks is extended to our Judges, Chris and Lyn from Dubbo.

Preschoolers — Busy, Christmas Elves!

Pictured, are the Preschool busy **Christmas Elves, Eloise, Matilda and Sophie.** They have been enjoying playing in the Christmas Shop with Santa hats and aprons.

.....*Lots more stories and pictures on page 4 & 9*



Christmas Lights Competition



It's on again!

Who will be the winner this year???????

Dust off those lights and get creative!

Voting can be done at Mountainside Beauty, Mountain View Hotel, Tooraweenah Trading and Tooraweenah Caravan Park.

Winner announced at 6pm December 24th at the Mountain View Hotel.



Introducing, Archie William Starr born, 23/10/23 to proud, happy parents, Andrew and Ash Starr. A precious little brother for, James, Tom, Taylor and Tully.



**Mountainside
Beauty & Massage**
Tooraweenah, NSW

Specialising in; Skin Health Programs
Traditional Beauty Services
* Health Fund Accredited*

Remedial & Advance Massage Therapy
Remedial, Sports, Relaxation, Deep Tissue
Pre & Post Natal Pregnancy,
Infancy, Cupping, Dry Needling, Pre/Post
Operation Care, Hot Stone Therapy

Check out our website for more information.

<https://www.mountaininsidebeautyandmassage.com.au/>
admin@mountaininsidebeautyandmassage.com.au

0439 470 549

TOORAWEEENAH TRADING CO

Your CRT Store in Tooraweenah
Post Office and Newsagency

Contact Lester

for all your agricultural needs

Phone: 6848 1011 or 6848 1127

Helping locals grow



Christie & Hood

**Auctioneers
Stock and Station Agents
Real Estate**

For all your livestock and property
requirements contact our:

Gilgandra Office: 0429 472 741
Dubbo Office: 6884 3800



After Hours

**Paul 0429 472 741
Tim 0429 843 804**

Please, Reach Out For Information & Support !

NSW Government Drought Hub

www.droughthub.nsw.gov.au

For Mental Health Information and support:

W: www.ramph.com.au to find the local RAMHP Coordinator

Rural Financial Counselling Service NSW Central Region

FREE Call: 1800 940 404

Email: ceo@rfcscr.com.au

Website: www.rfcscr.com.au

One Stop Drought Portal and Seasonal Conditions Information

Web Site: edis.dpi.nsw.gov.au. One stop Drought Portal and Seasonal Conditions Information including, rainfall, soil, moisture and plant growth.

Well worth a look!

Seniors Rights Service

Free and confidential.

Your side, your say Seniors Rights Service works for you. **Chat with us Fee**

Call 1800 700 600

National Debt Helpline

Request a FREE CONFIDENTIAL meeting with a Financial Counselor on

FREE CALL 1800 007 007

Regional Tech Hub — Check it Out!

Independent, FREE advice about telecommunications services for regional, rural and remote Australians. **Phone: 1300 081 029**

<https://regionaltechhub.org.au>



INDEX

- * Page 2: **Reach Out, Position Vacant & Index**
- * Page 3: **Around About, Mountain View News, Diary Dates**
- * Page 4: **Tooraweenah Preschool**
- * Page 5: **Toora Motors Thanks, Coffee Shop Gilgandra Shire**
- * Page 6: **Gilgandra Shire — Christmas Wonderland**
- * Page 7: **Work Dog Hints! CWA Chatter**
- * Page 8: **Tooraweenah Public School**
- * Page 9: **Pictorial, Emu Logic Emu Farm**
- * Page 10: **Check out our Business Support Advertisers throughout the Bungles. — Please, shop locally!**



TOORAWEENAH PRESCHOOL

POSITION VACANT

EARLY CHILDHOOD EDUCATOR

3 days per week

Wednesday, Thursday and Friday

Position Description

- * Permanent Part-Time and Casual roles
- * Work under direct supervision of the Preschool Director

Qualifications and Requirements

- * Minimum qualification of Certificate III in Early Childhood Education and Care
- * Working with Children Check
- * Police Check
- * Current First Aid Certificate

TO APPLY:

Applications are open and your resume and a cover letter can be sent to:

bekhoward43@gmail.com

Around The Traps ☺

Tooraweenah LPO

The rainfall for the month of November to date (22/11/23) was 45.4mm over 7 days.

Total rain for the year 317.9mm over 40 Days.

A reminder that your local post office has the Gilgandra Weekly available for sale each week and currently a good supply of Christmas Stamps.

Tooraweenah Lions Club

Toora Lions held their December meeting on Wednesday the 29th of November 2023, 7.00 for 7.30pm at the Mountain View Hotel.



The Club has a busy December planned with Saturday night BBQs at the Pub during December, they will also be running Christmas Raffles. So, come along one and all and support your local Lions Club that supports your local community.

A merry Christmas and happy new year to all our members and the community

Mountainside Beauty

Hairdresser continues to come to Mountainside Beauty and Massage for everyone to use.



Next Dates are:

17th December 2023

28th January 2024 we shall see Keryn return.

Please contact Mobile: 0439 470 549 or just show up on the day if you are happy for a short wait.

STOP PRESS:

Christmas Gifts and Vouchers now available.

Toora Bungles A BIG thank you to all our advertisers, contributors and readers. I hope you all have a safe and joy filled festive season.

The January edition will include an update on progress for 2024.

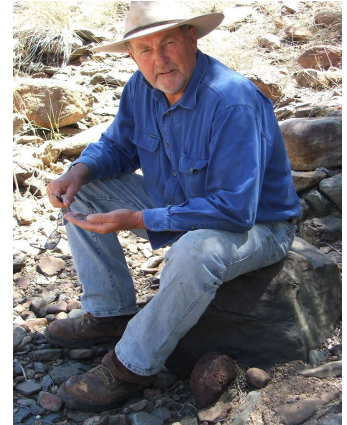
SINCERE THANKS

**Brian Robert Armstrong
1949 - 2023**

Please accept my sincere thanks on behalf of my family and myself for your condolences, cards, phone calls and offers of help on the death of my husband Brian.

His family, his farm, his community all meant the world to him. He was a quiet man but kind and wise.

We will miss him very, very much.



Sue Armstrong & family
19 November, 2023

News From The Mountain View !

Saturday 9th December

Check out the markets from 5pm

Santa arriving from 6:30pm

Christmas raffles from 6pm

BBQ dinner provided by the Lions Club

Free face painting & kids activities

stall at our Christmas party please contact the pub and let us know.

Christmas closure dates Closed

Monday 25th, Tuesday 26th & Wednesday 27th
We are open Monday

1st January — bistro hours are 12-2 & 6-8.
Lions will be hosting the BBQ'S this month, they are also having their Christmas raffles too!

We have a few dates left for Christmas parties so please get in touch to book yours now!
Phone 6848 1017

Our pub Christmas party is on December 9th.
If your wanting to have a

👍 Diary Dates 2023 ☺

**Take Time out!!
Relax and Enjoy Life!**

December
2nd, 9th, 16th, 23rd, 30th
Community BBQ'S
Tooraweenah Lions Club

Thursday 7th
Tooraweenah School
Presentation Night

Friday 8th — 6pm
Tooraweenah Preschool
Picnic in the Park

OAKFIELD KELPIE STUD

Offering affordable black & tan working kelpie pups for sale.

Strong, Calm & Smart

Karana & AKennedy's bloodlines
The best genetics available

Contact
Brendan Butler 0447481048



Servo's across NSW

Call- 1800 638 700

'More than just fuel'



Looking for a gift?
Shop local at Emu Logic.

Open over summer
Fridays and Saturdays
10am to 4pm
www.emulogic.com.au
Ph:0268254346

Tooraweenah Preschool, 'Developing Wings of Independence' Marie Gale (Jacobsen)

We've had some busy farmers on the mat and also some mechanics, so the garage and farm yards have all been out and all of the vehicles and machines have been working hard too. Other friends have been making stables ("for everything") on the mat with the magna-tiles and we've been experimenting with magnets too. Some great problem solving with the matching games and puzzles – everyone is getting so very clever with these, even with the new, more challenging puzzles that we have!

Children have enjoyed playing outside at the fruit shop, with the dolls and in the sandpit. We've had some wild pigs, sheep shearing and bull riding all going on as well as lots of fast 'motorbikes' racing around our track – apparently they've been rounding up sheep as well as chasing wild pigs and bulls. There has certainly been a hive of activity! We've been checking our tomato plants and enjoying the lovely weather outside. Our budding artists enjoy painting at the easels and we've certainly had some masterpieces created here.



Maggie, Sophie & Eloise building roads.

Preschool friends have been using a variety of constructions to make and create all sorts of buildings, structures and roads. We've had amazing towers and 'everything stables' built for all of the animals with the magna-tiles, there have been some great roads built with the wee waffle set and also some train journeys taken on the various tracks. We've had a lots of imaginative play with busy doctors and nurses – some friends have fallen out of trees and broken both legs so they've needed lots of bandages and others have fallen off bikes and broken arms and some friends just have broken bones that

need fixing by the "Preschool Medical Staff". Sophie has been sharing her bandaging tips with everyone as she knows how to do this.



Sophie with two broken legs for Dr Eloise to fix!

Friends have been very busy playing in our "Christmas shop" in the home corner, with our Santa hats and aprons, and the 'Christmas shelf' has been popular with some funny Christmas characters and ornaments to investigate and play with. We've had lots of 'Christmas Elves' each day and they had lots of fun playing a new made up game, "Christmas", where they give away (play) money and then take it back again. There has also been a Christmas café set up for food for both Santa, the reindeer and of course his busy elves.

We have been enjoying some Christmas crafts and we are getting ready for our Concert that will be here before we know it! ***We have decorated our Christmas tree pictured right; and also our room as well, which has been quite fun.*** We also have some new decorations that look awesome and we made some too.

We are very excited about our Preschool Christmas Concert and Party in the Park that we are holding at the Tooraweenah Park on Friday 8th December, starting at 6pm. This year we are telling the story "And Kangaroo

Played His Didgeridoo", as well as singing some songs and dancing a few favourites. We have been very busy making our concert props and crowns and can't wait to perform for our families and friends at the park. Make sure you bring along your picnic blankets and/or fold up chairs!



Ryder, Eloise & Isaiah painting props

We have had a fabulous year at Tooraweenah Preschool and we sincerely thank the Tooraweenah community for their ongoing support and assistance in so many ways throughout the year. We are very fortunate to live in such a wonderful community.

We wish everyone a very Merry Christmas and a safe and happy Holiday season. May your Christmas be "merry and bright" and full of fun, love and laughter.

Marie Gale (Jacobsen) Nominated Supervisor



Our amazing Christmas Tree!

Toora Motors — Thank Their Customers

I would like to thank all the customers for their continued support throughout this year again and wish them all the best for the Christmas season and a happy New Year.

I will be closing over the Christmas and New Year period from the 23/12/23, reopening on the 8/1/24.

Just a reminder, for rego inspections, please book in now, many people are waiting until the day their rego expires to come in and will miss out at this time of the year.

With the increase in online shopping, many parcels are being delivered here. Unfortunately we are not a storage depot and have very limited area to store goods.

We have been taking parcels as a community goodwill gesture and will continue the service, however all goods/

parcels will need to be picked up on the day of delivery.

If goods/parcels are left here for an extended period of time starting in the New Year, a handling, storage fee will apply.

Thank you once again, for your patronage and continued support.

Steve Watt
Toora Motors



Gilgandra Shire Council — *Live > Enjoy > Grow*

GILGANDRA SHIRE COUNCIL CHRISTMAS SHUT-DOWN PERIOD

Council wishes all residents a safe and merry Christmas, and happy New Year!

The following Council offices and services will close at the end of business Thursday, 21 December 2023 and re-open on Tuesday, 2 January 2024.

Council's administration office – Warren Road

Gilgandra Shire Library

Service NSW

Gilgandra Youth Services

The Coo-ee Heritage Visitors Information Centre will be closed on the 25 December 2023, open 9.00am to 4.00pm all other days

Gilgandra Fitness Centre will close on Thursday, 21 December 2023 at 7.00pm and re-open at 1.00pm on Tuesday, 2 January 2024. Keyless toggle access is available during these dates and public holidays.

Gilgandra Swimming Pool will be closed on 25 and 26 December 2023, and 1 January 2024.



For anything urgent through the holiday break, please phone 6817 8800 and follow the prompts.

More news, checkout
..... page 6

Tooraweenah Caravan Park Coffee Shop

Tooraweenah Caravan Park Coffee Shop			
Coffee	Reg \$5	Sml \$4	
Iced Coffee	\$6	Frappe	\$6
Iced Latte	\$6		
Iced Long Black	\$5		
Iced Chocolate	\$6	Hot Chocolate	\$5
Milkshakes	Reg \$6	sml	\$5
Biscuits	\$4		
1.4% Surcharge on card purchases			

Come in and check out our new summer menu.

A great excuse to meet up with friends and family.

Open 8 until 4ish 7 days a week.
6848 1133

Gilgandra Shire Council — *Live > Enjoy > Grow > continues*

HAVE YOUR SAY > CASTLEREAGH COUNTRY DROUGHT RESILIENCE PLAN!

Gilgandra and Warrumbungle Shire Councils have received \$200,000 in funding from the Commonwealth and NSW Governments Regional Drought Resilience Planning Program to develop the Castlereagh Country Drought Resilience Plan, and are seeking your input on how best to prepare and respond to drought.

Capturing your views, understanding impacts and opportunities in a prepared and resilient way, is vital in making a positive impact during the next drought.

Complete the online survey today and Have Your Say!

Survey link

><https://www.surveymonkey.com/r/YVMXP23>

SHARE YOUR PHOTOS

Share the images that demonstrate the resilience, the community, the landscapes and the impact drought has.

For more information including the link to the survey and to share your photos, visit Council's website: Home > Connect > Have Your Say.



**Christmas
WONDERLAND
GILGANDRA**

**5PM, THURSDAY
14 DECEMBER 2023**

Let's bring the Christmas spirit to the Gilgandra Region this December!

Come and enjoy an evening of festive community fun in Miller Street, including:

- Late night shopping
- Shop Local Major Draw @ 7pm
- Gilgandra CWA Markets
- Kids Activities, including
 - Jumping Castle
 - Face Painting
 - Worm Farm Workshop
 - Elf Hunt
- A visit from Santa @ 6pm
- Live entertainment and so much more

For more information, visit
www.gilgandra.nsw.gov.au

To be involved, please contact
Council's Activation &
Communications Team
enjoy@gilgandra.nsw.gov.au



Hints From the Dog House with Brendan Butler

One of the useful tools for controlling a good work dog that is used by work dog handlers to different, varying degrees, is the good old whistle.

I remember my father using his loud piercing natural whistle to call his dogs back to him when they were at a distance, and I am amazed when I see some of the top trial dog handlers and how much control they have on their dog by using whistle commands.

The common whistle commands that can be taught to a dog are usually their left and right sides, a stop, a walk up and a call off, and can be very handy when a dog is out of voice range. The usual way to get the dogs used to the whistle commands is to incorporate a different whistle tone pitch, with a voice command until the dog can distinguish the different whistles without the voice command.

An example is with a young dog, once it will balance a small mob of trainer sheep, we can teach it its left and right sides, if we move away from the sheep and then change direction to one side, for example to the left, the dog should mirror our movements on the other side of the sheep and go to the right to stay on the balance. As we change direction we give the dog a voice command, in my case it would be to get over or if I'm going to the right I would tell the dog to get around and go left.

If we incorporate a whistle with the command to get around it will eventually associate that tone of whistle to that command.

The same with a walk-up and stop command followed straight away with the whistle and in my case I try to have my left and right side whistles nearly opposite in pitch so that it is

distinctive, my around whistle is low tone and monotone and longer, and the over whistle is high pitched and short. A walk up whistle is two short whistles and a stop is a loud short sharp whistle.

If you don't possess a natural whistle they are able to be purchased from the working stock dog magazine for between \$30 to \$80 and are not too hard to work. Happy Mustering.

Brendan Butler
Oakfield Kelpies



Tooraweenah CWA Chatter! With Cath Waller



A big Hi to all, The year is fast coming to an end.

At our November meeting suggestions for our 100th

Birthday celebrations in 2025 are to be dot pointed for presentation to our February 2024 meeting when a final decision will be made.

Our Christmas Party is on December 13th, in the Gilgandra CWA Rooms. Please RSVP to Beverley by December 4th. Long Service Badges will also be presented to four of our members.

Just a reminder to please bring along a gift

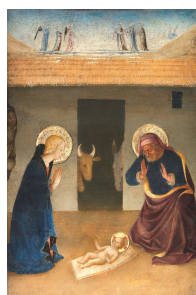
for a boy or girl with an age printed on the tag. These will be given to a local charity for distribution.

Our Branch is in recess now, until February 14th 2024.

Don't forget to bring your Pudding for Judging at the Christmas Party.

Wishing you all a happy and Holy Christmas and a joy filled New Year.

Buy for now. Cath Waller
Publicity.



TOORA MOTORS



MVRL—57677
ABN—95714460638
7 Denman St
Tooraweenah NSW 2817

- * All mechanical Repairs & Servicing
- * Rego Inspections on Light & Heavy Vehicle
- * Brown slip inspections on Heavy Vehicles
- * Tyre repairs & fittings
- * Battery supplies
- * Bags of Ice
- * Limited on site repairs

Call Stephen Watt Tel: 6848 1182
Mobile: 0466 472 897
Email: stephenwatt33@gmail.com

Needing a Remedial, Sports, Pregnancy or Relaxation Massage?

Nicole is Diploma Qualified and Health Fund Accredited
Located in Tooraweenah

For appointments call or text
Nicole Harte
0457 954 346



Eat in or Takeaway
7 days a week

Opening hours

12 Noon
Bistro hours 12-2 & 6-8.30pm
Fridays 6 to 9pm

Full menu available all the time whilst our kitchen is open.
Follow our Facebook page

Tooraweenah Public School with Principal Karen Smith.

Transition Fun

Transition students have been watching Kindergarten do their reading & maths warm-ups and joining in with the singing and dancing during warm-ups, too. With Kindergarten, they enjoyed many activities building hand strength, fine motor control and counting. Our transition students were also very happy to help out our older students in caring for our chickens. Transition students had the opportunity to engage in 14 days of Transition to school since the beginning of Term 3. It has been a real pleasure to have Transition students join us each Monday and we look forward to them joining us next year in 'big school'. The first day for Kindergarten 2024, will be Thursday 1st February 2024.

Ag@Toora and 'Farm Gate' Egg Stall

The students helped to make our chickens more comfortable over the summer months by helping to put up the shade and dripper line to cool off our chickens in the heat. The fence was moved again to provide fresh grass for them and everyone helped plant some new seedlings in the garden. We are looking forward to seeing how the pumpkin seedlings grow over the coming weeks. Wes and Carl from the Warrumbungle National Park Environmental Education Centre (WNPEEC) were on hand to help facilitate these activities. Preparations are underway for the creation of our Farm Gate Egg Stall. The 1/2/4 class have designed an Egg Stall for the front of the school which Carl will put together as per their specifications. Thank you to Wes and Carl as well as Mrs Jenkin, Mrs Goldman and Mrs Quilter for all their assistance.

'Beach to Bush'

We had the incredible opportunity to learn all about beach and water safety thanks to the amazing volunteer lifesavers, Matt & Justine. They have been visiting schools in rural areas of NSW, spreading awareness and equipping students with essential knowledge around beach safety. Justine & Matt covered a wide range of topics from general beach safety, sun

protection, understanding rips and waves, sea creatures, and even how to seek help from a lifeguard. We were very pleased to engage in this incursion ahead of the summer holiday period.

F flags

L look for beach signs

A ask a lifesaver for any help at all, in or out of the water– sunscreen, first aide, lost,

G go swimming with a friend

S signal for help – hold your hand straight up in the air



Remembrance Day

A Remembrance Day service was held at school on Friday 10th November at 11am. Remembrance Day is an important day to remember and reflect on the service of our men and women in the Australian defence forces in both peacekeeping and times of war. We are thankful to all who have served, so that we are able to enjoy peace in our country today. Thank you to Sam, Bonnie and Hamish who assisted in raising the flags during the ceremony, our students showed exceptional respect during the service, and the Preschool students and staff who joined us during this commemoration service. Lest we forget.

Technology

On Fridays, students have been greatly enjoying learning coding with Sphero Indi and they solved mazes with Sphero Indi. What a fun and practical way of seeing coding in action using the Sphero Indi robot. This was the final week with the STEM T4L Inventor Robotics Kits, with students completing some coding challenges with Indi.

'Science Discovery Project' Visit

We had the pleasure of welcoming retired teachers, Paul and Jo from Science Discovery Project who travel around to schools, enhancing their knowledge of science with hands on experiments. They amazed our students and Preschool students in launching a rocket with air pressure, investigating electrical currents and how they are generated from spinning copper coil in a magnetic field. Students saw magnet repel and attract and predicted how gravity would influence them. We are very thankful to Paul and Jo for sharing their extensive knowledge and sparking curiosity in our students for science.

Delicious Spinach & Fetta Gozleme

We are very thankful to Mrs Jenkin for leading the Ag@Toora program with K-6 during the year. Students harvested the baby spinach and chives, they had grown in the STEM T4L hydroponics 'Air garden' and made some delicious spinach and fetta Gozleme (Turkish flatbread) with Mrs Jenkin and Mrs Barry. I'm sure you would agree, the students look like expert chefs creating these delicious flat breads, even making the dough from scratch.

I was very happy to hear that all students tasted the flatbreads (to somewhat mixed reviews) and tried the fetta, ricotta and shredded cheese along with the natural yoghurt that was used to make the flatbread. It was concluded that the students were fine chefs, producing a lovely crisp flatbread that was fluffy in the middle, but possibly more satisfying for a mature palette!



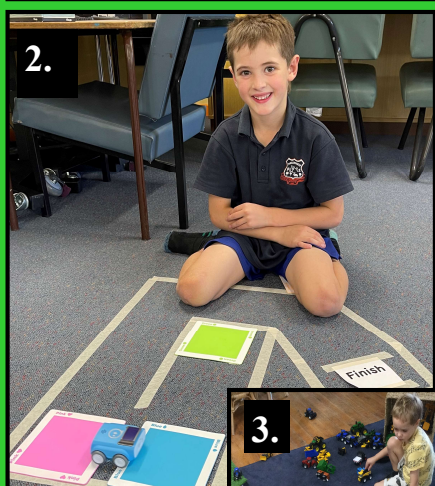
Sam, making Gozleme.

Tooraweenah Region, Relaxed, Bringing Joy And, Enjoying Life!



1. Bonnie, Maddison & Eloise enjoy making Gozleme. 2. Billy Larking solving the Maze with Sphero Indi. 3. & 4. Ryder and Ben 5. Oscar & Hannah. 6. Christmas Elf Ryder going shopping. 7. Students passed electric current through their bodies with hands or ears! 8. Christmas Elf Ally going fishing. 9 Christmas Elves Maggie & Storme.

10. Matilda & Ally painting 11. Emu Farm




Holidays, a time for sharing, smiles and laughter!



11.

Emu Farm
'Emu Logic'
Open over
summer
Fridays &
Saturdays
10am to 4pm
www.emulogic.com.au
Phone:
02 6825 4346



BANK LOCAL

A bank with the lot.
For locals anywhere

Find out more. Call 6847 1502 or visit the branch at 51 Miller Street, Gilgandra.

Bendigo Bank

Bendigo and Adelaide Bank Limited ABN 11 068 049 178, AFSL/Australian Credit Licence 237879 A1455027 OUT_33068657, 20/11/2023

Items repaired or replaced using
BASIC MACHINING & WELDING



Simon Blackman

Mobile: 0428 064 555
Home: 6848 1149

MENTAL WELLBEING

Depression
It's not a matter of just being tougher or more resilient ... you're in strife and you can be helped

www.beyondblue.org.au or
Phone: 1300 224 636
youthbeyondblue.com
1300 22 4636

Anxiety Disorder Information:
1300 794 992

Mental Health Information
1300 794 991

Mental Health Line
1800 011 511—24 Hour access

Lifeline: 13 11 14
Men's Line Australia
1300 789 978
Kids Help Line
1800 55 1800
Domestic Violence
1800 656 463
Alcohol & Drug Info Service
1800 422 599
Suicide Call Back Service
1300 659 467



Checkout this website!
www.yougotthismate.com.au

It provides tips and info to help rural men reach their best possible mental health and info you need to help you be the best possible support for a loved one who is experiencing tough times!

Veterinarian
Nadine Allan BVSc Hons

Will visit Tooraweenah
second Tuesday each month

Phone 6847 1129
for appointment

Gilgandra Veterinary Clinic
2 Enterprise Drive
GILGANDRA NSW 2827

Mobile: 0427 471 129

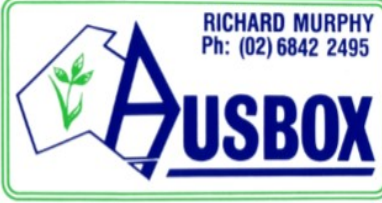


FOR HIRE


Cool Room

Contact
Geoff or Bev Pike

6848 1190



RICHARD MURPHY
Ph: (02) 6842 2495



ROBERT WALLER
'Bob's Plant Hire'

Phone
6848 3514
Mobile
0423 281 691

Need contour banks, roads
or small dams?

Contact Robert



Ovarian Cancer Australia

Our vision is to save lives and ensure that no woman with ovarian cancer walks alone.

Help Line: 1300 660 3345

CTC@Tooraweenah

We are CLOSED to the public until further notice
Ph. 6848 1154

Tooraweenah Caravan Park



- Relaxed Friendly Atmosphere
- Pet Friendly
- Powered & Unpowered Sites
- Ensuite Cabins
- Pool

Resident Owners
Scott & Janelle Quilter
6848 1133
www.tooraweenahcaravanpark.com