



INLAND RAIL COMMUNITY ENGAGEMENT

NARROMINE TO NARRABRI

SEPTEMBER 2018

About Inland Rail

Inland Rail is a once-in-a-generation project connecting regional Australia to domestic and international markets, transforming the way we move freight around the country. It will complete the 'spine' of the national freight network between Melbourne and Brisbane via regional Victoria, New South Wales and Queensland.

The Australian Government is delivering Inland Rail through the Australian Rail Track Corporation (ARTC), in partnership with the private sector.

Narromine to Narrabri project

The Narromine to Narrabri (N2N) project is one of the three 'missing link' projects in NSW. Located in mid north-western NSW, it is integral to connecting the adjacent projects; the Parkes to Narromine project to the south, and the Narrabri to North Star project to the north. At approximately 300km in length, it is the longest missing link of Inland Rail.

In November 2017, the Australian Government confirmed the preferred study area for the N2N section of Inland Rail. This decision followed an analysis of corridor options, with the chosen preferred study area presenting the best balance of benefits for industry and the community.

Upcoming community consultation

Our next round of community consultation will take place in September 2018. Come along to a community meeting or a drop-in session in your area. You'll be able to ask questions about the N2N project, discuss the next phase of design and get to know the timeframes to determine the rail corridor.

Community meetings

Community meetings will involve a presentation by ARTC Inland Rail.

| | |
|------------------|--|
| Narrabri | |
| When: | 5:30–7:30 pm, Monday 3 September |
| Where: | Narrabri Crossing Theatre, 117 Tibbereena Street, Narrabri |
| Baradine | |
| When: | 5:30–7:30pm, Tuesday 4 September |
| Where: | Baradine Bowling Club, 51 Narren Street, Baradine |
| Gilgandra | |
| When: | 5:30–7:30pm, Wednesday 5 September |
| Where: | Gilgandra Services Club, 33 Morris Street, Gilgandra |
| Narromine | |
| When: | 5:30–7:30 pm, Thursday 6 September |
| Where: | Narromine United Services Memorial Club, 58 Dandaloo Street, Narromine |

To help us ensure the meetings are as useful as possible, we would appreciate if you email us any technical questions you would like answered by Friday 31 August to inlandrailnsw@artc.com.au.

Drop-in sessions

Drop in-sessions are a great way to chat one-on-one with the project team.

| | |
|------------------|--|
| Narrabri | |
| When: | 10 am–1 pm, Tuesday 4 September |
| Where: | Narrabri Bowling Club, 176 Maitland Street, Narrabri |
| Baradine | |
| When: | 10 am–1 pm, Wednesday 5 September |
| Where: | Baradine Bowling Club, 51 Narren Street, Baradine |
| Curban | |
| When: | 10 am–1 pm, Thursday 6 September |
| Where: | Curban Community Hall, National Park Road, Curban |
| Narromine | |
| When: | 10 am–1 pm, Friday 7 September |
| Where: | Soul Food Design Depot & Gallery, 1–7 Dandaloo Street, Narromine |



Where are we now?

As part of the planning process for the N2N project, we have submitted a State Significant Infrastructure Application and a Scoping Report with the Department of Planning and Environment (DP&E).

In the coming weeks, DP&E will issue the Secretary's Environmental Assessment Requirements (SEARs) for the project. The SEARs will set out the issues that must be addressed in the Environmental Impact Statement (EIS).

Next steps

We will now undertake a series of investigations and field studies to gain an in-depth understanding of local ground conditions, hydrology and flooding issues and to identify local flora and fauna habitats. This is called the Project Feasibility stage and will help us understand any technical challenges and opportunities. It also helps to inform our conversations with communities across the alignment. This information will feed into the EIS.

At the same time, we will also progress engineering design work which will help us determine where in the study area the final 40 to 60-metre-wide rail corridor will go.

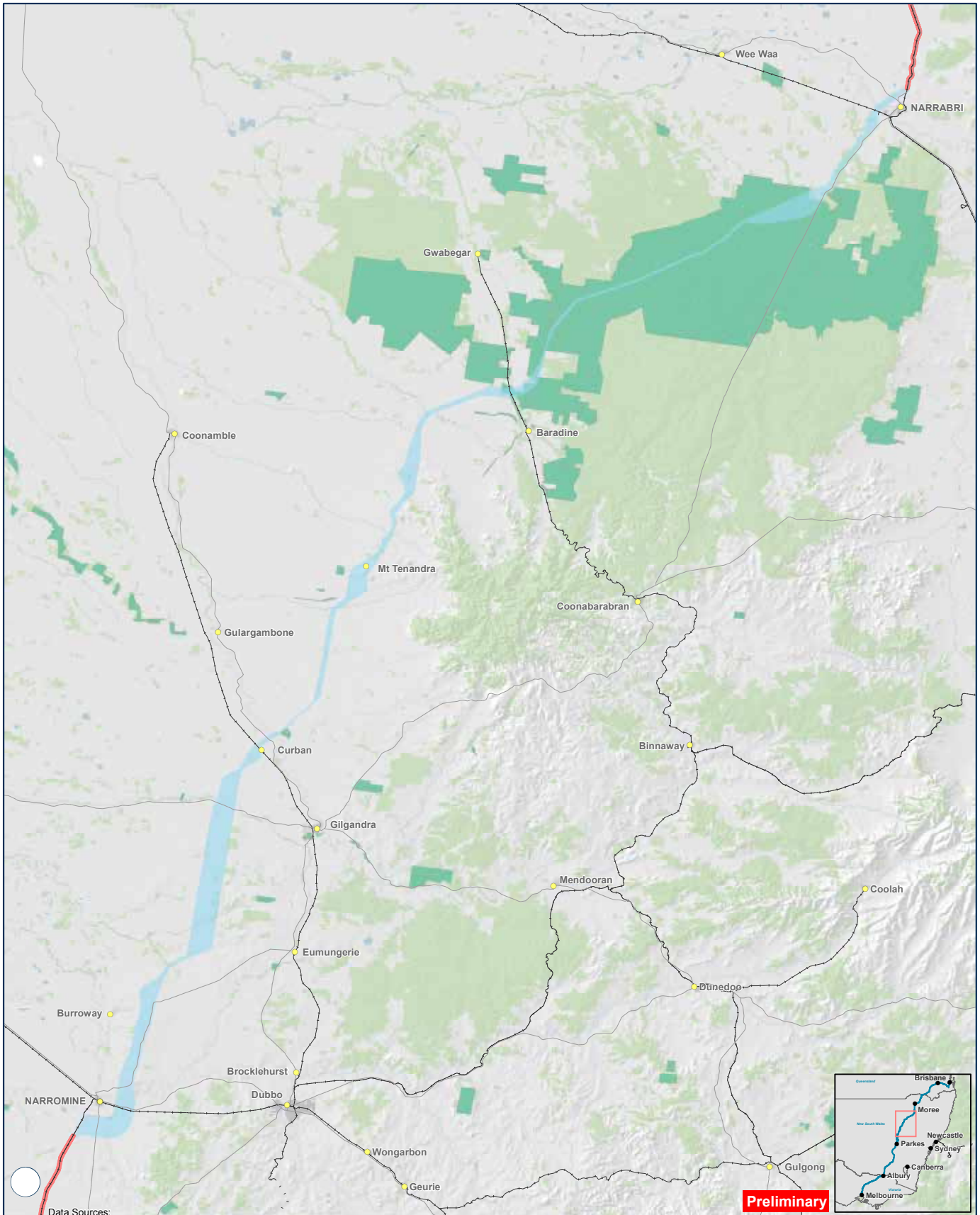
What you might see in your area

In the coming weeks, some of the investigations you may see being undertaken in your area include:

- ▶ ecological surveys – to identify habitats and/or species that exist within the area of investigation
- ▶ utility identification surveys – to identify infrastructure such as gas and water pipelines
- ▶ heritage surveys – investigations for any evidence of Aboriginal and non-Aboriginal artefacts/heritage
- ▶ noise, air quality and vibration surveys – to measure background noise, air quality and vibration levels at key sites
- ▶ land surveys – to identify property boundaries and any easements and to install survey pegs if required
- ▶ geotechnical surveys – to obtain information about the physical properties of the soil and rock
- ▶ hydrology studies – to obtain information about flooding and surface water movements.

ARTC remains committed to working closely with all community members and ensuring minimal disruptions, which includes adhering to Land Access Agreements in place.





Preliminary

NARROMINE TO NARRABRI

Project Overview Map

25 Km
 Coordinate System: GCS WGS 1984
 ARTC makes no representation or warranty and assumes no duty of care or other responsibility to any party as to the completeness, accuracy or suitability of the information contained in this GIS map. The GIS map has been prepared from material provided to ARTC by an external source and ARTC has not taken any steps to verify the completeness, accuracy or suitability of that material.
 ARTC will not be responsible for any loss or damage suffered as a result of any person whatsoever placing reliance upon the information contained within this GIS map.
 Paper: A3 Date: 09/08/2018 Scale: 1:750,000
 Author: IR GIS

- LEGEND**
- Road
 - +— Railway
 - Water bodies and courses
 - Upgrade track within existing corridor
 - N2N study area
 - State forest
 - Native vegetation (forest or shrub)

ARTC InlandRail

The Australian Government is delivering Inland Rail through the Australian Rail Track Corporation, in partnership with the private sector.

G:\03_GIS_SYSTEM\05_TASKS\VR2500_N2N\20180809_N2N_Overview_Map_A3\2500_N2N_Map_for_Stakeholders.mxd

Where will the final corridor go within the study area?

The exact location of the final corridor has not been determined yet. We are currently undertaking feasibility and design work which will help us confirm where in the study area the final 40 to 60-metre-wide rail corridor will go.

A decision on the final corridor will also include consideration of all the community feedback received.

What are the economic benefits and opportunities from the rail track for the local community?

ARTC Inland Rail is committed to using local suppliers, skills and labour where possible. There will be opportunities for new jobs. Our local participation plan will be tailored to each area in consultation with councils and communities, and we will work with local communities to leave a legacy.

The dedicated freight network will connect farms to global markets. It will provide supply chain benefits and substantial cost savings for growers and producers. For information about the economic benefits to farmers please refer to the *ARTC 2015 Inland Rail Programme Business Case*.

What is an Environmental Impact Statement (EIS)?

The Environmental Impact Statement (EIS) explores the potential environmental impact and outlines measures to manage and reduce this impact based on best practice and expert advice. An EIS enables the community and other stakeholders to understand and formally comment on the project and its impacts.

The NSW Department of Planning and Environment (DP&E) manages the EIS process and coordinates federal and state agency input.

I have concerns about flooding. How will ARTC Inland Rail ensure risk of flooding is minimised?

We are aware that flooding is a key concern. Extensive flood modelling and hydrology assessments are a core part of the planning and design process. This will include consultation and data sharing with local councils and water and catchment groups. We will also consult with local communities to ensure accurate and useful data is used. We welcome your insights and ongoing feedback about flooding history specific to your property and local area.

When will property owners find out if their property will be required for Inland Rail?

Land required from individual properties will not be determined until the rail corridor is confirmed.

We acknowledge that there have been requests for further clarity on compensation and acquisition of land. As information becomes available, we will contact you to explain the process and begin negotiations.

Are there standards which determine compensation for land acquired for Inland Rail?

Compensation will be assessed by an experienced property valuer in accordance with the *Land Acquisition (Just Terms Compensation) Act 1991 NSW*.

The compensation standards ensure that a land owner is put in a position of being no worse off financially after the acquisition.

Find out more

ARTC values all feedback from the community and landowners. If you have any questions or comments about Inland Rail and impacts in your area or on your property, please let us know.

 **1800 732 761**

 **inlandrailnsw@artc.com.au**

 **ARTC Inland Rail, GPO Box 14, Sydney NSW 2001**

 **www.inlandrail.com.au**

The Australian Government is delivering Inland Rail through the Australian Rail Track Corporation (ARTC), in partnership with the private sector.